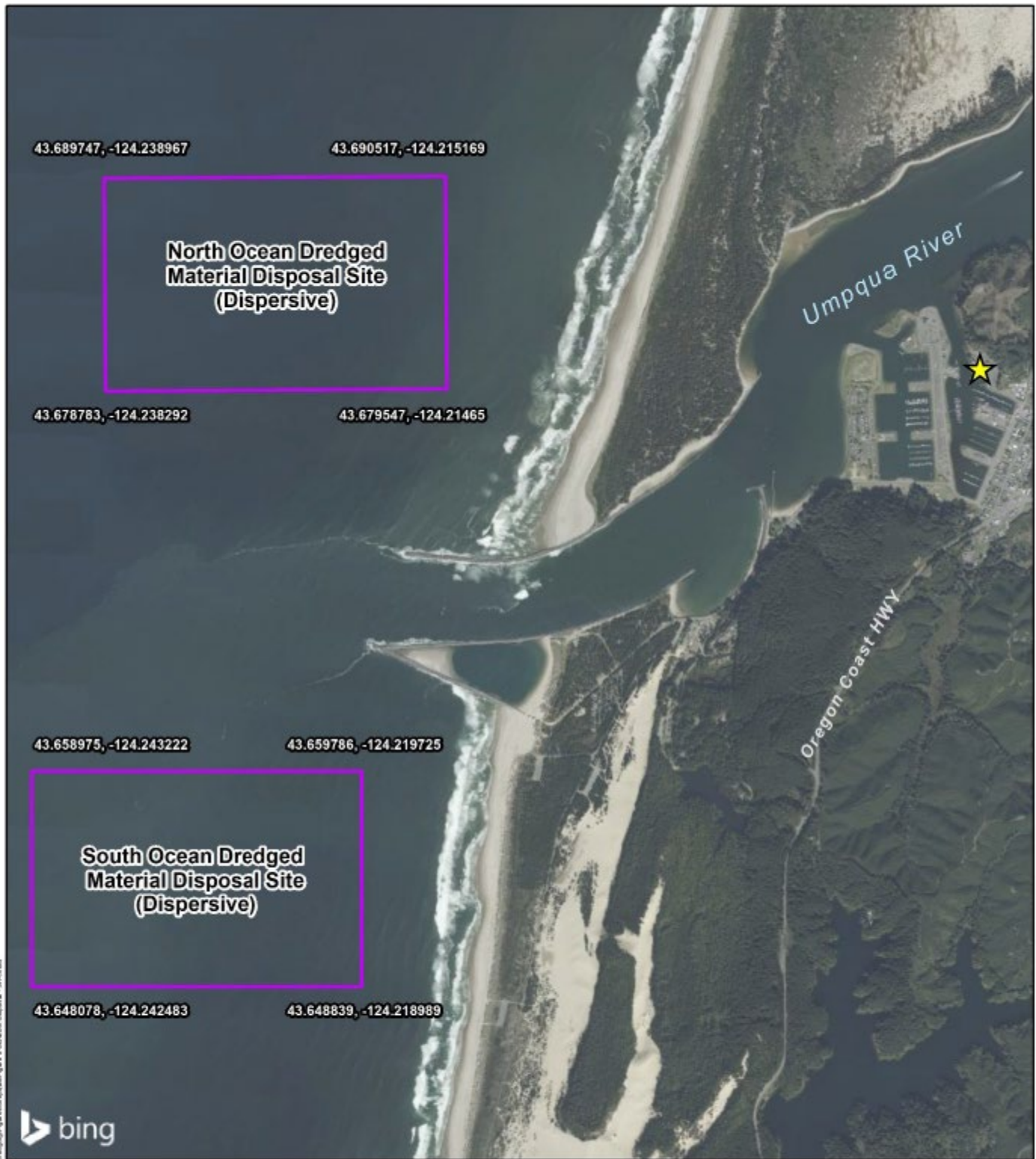


U.S. Coast Guard Maintenance Dredging Application Figures

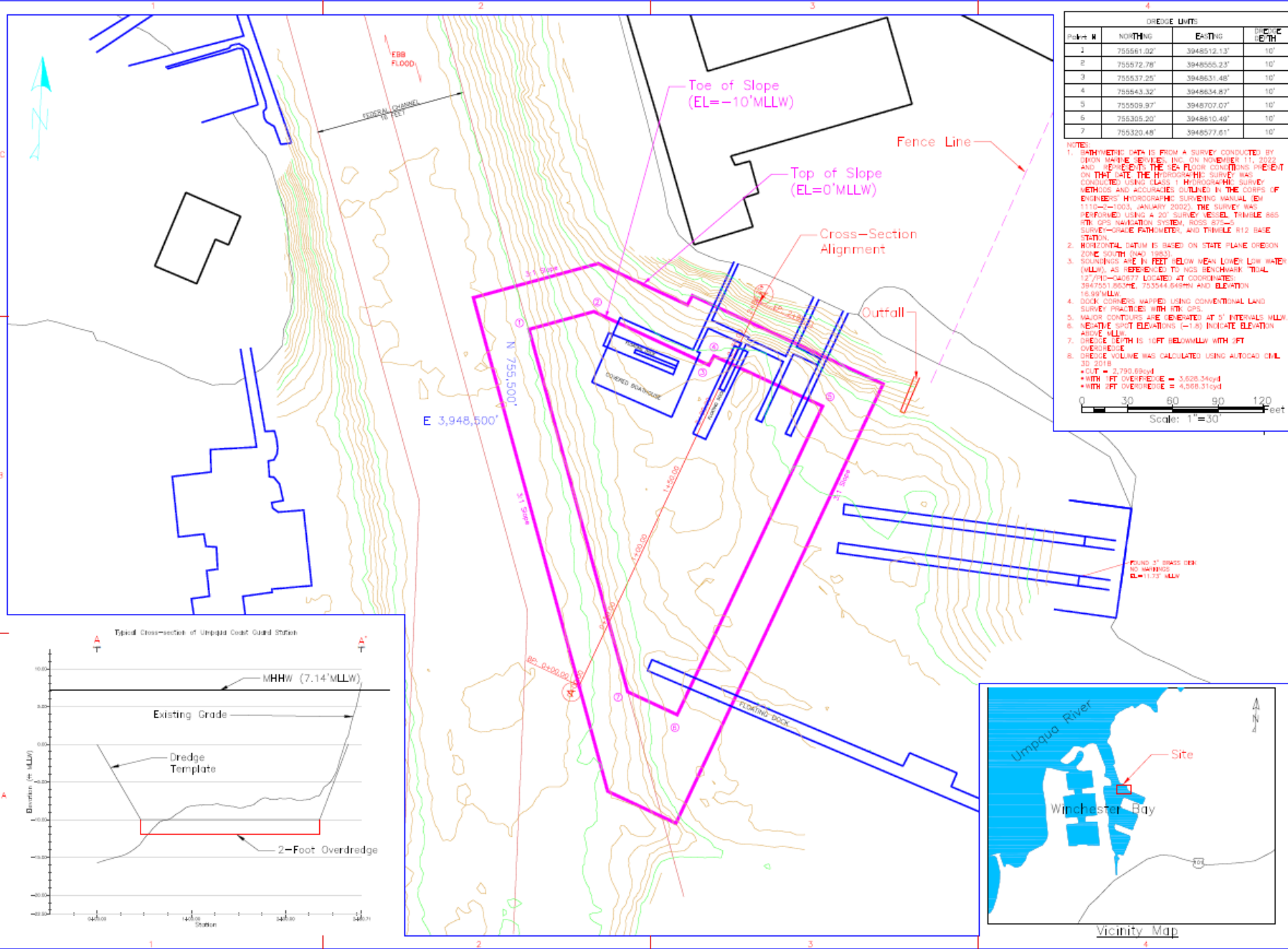


Document Path: H:\70561_9005\CDI\Output\20230801 - Dredging Figures\Map\Figures 1.0\ODMS Location - JBA.mxd

<p>Figure 5. ODMS Location Map, USCG Station Umpqua River, Maintenance Dredging Project</p> <p>Winchester Bay, Oregon August 2023</p>	<p>Legend</p> <ul style="list-style-type: none"> ★ Station Umpqua River Potential Disposal Location <p><small>NOTES: 1. COORDINATES ARE IN NORTH AMERICAN DATUM 83 (NAD 83) DECIMAL DEGREES. 2. OCEAN DREDGED MATERIAL DISPOSAL SITE COORDINATES ARE FROM THE FEDERAL REGISTER. (FINAL RULE). OCEAN DUMPING, DESIGNATION OF OCEAN DREDGED MATERIAL DISPOSAL SITES OFFSHORE OF THE UMPQUA RIVER, OREGON, 74 FR 18648 (APRIL 24, 2009).</small></p>		
--	---	--	--

RMD 12/2/2022, WHL 2/9/2023, HAH 8/4/2023

U.S. Coast Guard Maintenance Dredging Application Figures

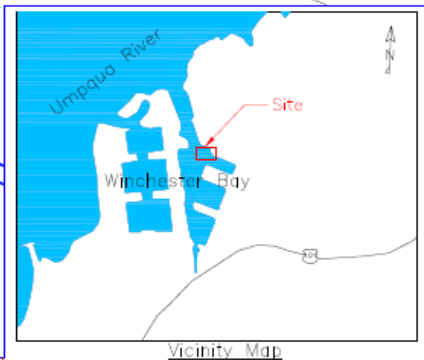
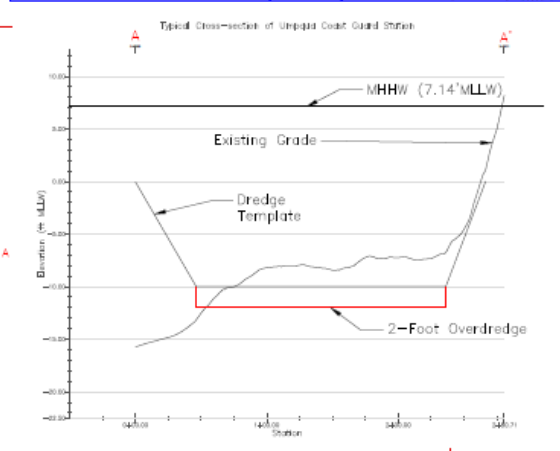


DREDGE LIMITS			
Point #	NORTHING	EASTING	DREDGE DEPTH
1	755581.02'	3948512.13'	10'
2	755572.76'	3948555.23'	10'
3	755573.25'	3948631.48'	10'
4	755543.32'	3948634.87'	10'
5	755509.97'	3948707.07'	10'
6	755305.20'	3948610.49'	10'
7	755320.48'	3948577.61'	10'

NOTE:

1. SPATIAL DATA IS FROM A SURVEY CONDUCTED BY DIXON MARINE SERVICES, INC. ON NOVEMBER 11, 2022 AND IS SUBJECT TO THE FLOOR CONDITIONS PRESENT ON THAT DATE. THE HYDROGRAPHIC SURVEY WAS CONDUCTED USING CLASS 1 HYDROGRAPHIC SURVEY METHODS AND ACCURACIES OUTLINED IN THE CORPS OF ENGINEERS HYDROGRAPHIC SURVEYING MANUAL (EM 1110-1-1003, JANUARY 2002). THE SURVEY WAS PERFORMED USING A 20 SURVEY VESSEL TRIMBLE 885 RTK GPS NAVIGATION SYSTEM, HOSS 8725-S SURVEY-GRADE PATHMETER, AND TRIMBLE R12 BASE STATION.
2. HORIZONTAL DATUM IS BASED ON STATE PLANE OREGON ZONE SOUTH (NAD 1983).
3. SOUNDINGS ARE IN FEET BELOW MEAN LOWER LOW WATER (MLLW), AS REFERENCED TO NOS BENCHMARK TIDAL 127710-440977 LOCATED AT COORDINATE: 3947501.8650E, 753544.6450N AND ELEVATION 16.89' MLLW.
4. DOKK CORNERS MARKED USING CONVENTIONAL LAND SURVEY PRACTICES WITH RTK GPS.
5. MAJOR CONTOURS ARE GENERATED AT 5' INTERVALS MLLW.
6. NEGATIVE SPOT ELEVATIONS (-1-18) INDICATE ELEVATION ABOVE MLLW.
7. DREDGE DEPTH IS 10FT BELOW MLLW WITH 3FT OVERDREDGE.
8. DREDGE VOLUME WAS CALCULATED USING AUTOCAD CIVIL 3D 2018.
 - CUT = 2,790.63yd
 - WITH 1FT OVERDREDGE = 3,626.34yd
 - WITH 3FT OVERDREDGE = 4,568.31yd

Scale: 1"=30'



BB&E, INC.
235 MAIN ST, SUITE 107, NORTHVILLE, MI
(248)-489-3636

CONSULTANTS:
DIXON MARINE SERVICES, INC.
MENLO PARK, CA (415) 859-7389

**U. S. COAST GUARD
CIVIL ENGINEERING UNIT
OAKLAND**

USCG, CEU OAKLAND
1301 CLAY STREET, SUITE 700N
OAKLAND, CA 94612

ISSUE	MARK	DATE	DESCRIPTION

AVE PROJECT NO:
CAD FILE NAME: 2017 USCG STA IMPROV.DWG (J)
DESIGNED BY: JR
DRAWN BY: JR
CHECKED BY: MS
SCALE: 1"=30' PLOT SCALE: 1:1

SHEET TITLE

**U.S. COAST GUARD
STATION UMPQUA
WINCHESTER BAY, OR
STA UMPQUA RIVER
CIVIL
CONDITION SURVEY**

PREPARED BY: M.I. REVIEWED BY: M.H.L. REVIEWED BY: P.A.H.
SERVED TECH: ANOOC SUPERVISOR: PROJ. MANAGER:
DATE OF: FRANK BORDES 3/1/23
PROJECT NUMBER: DATE:

PROJECT NUMBER: PSN16890780 DRAWING NUMBER:
SHEET 1 OF 1