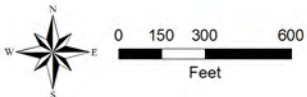


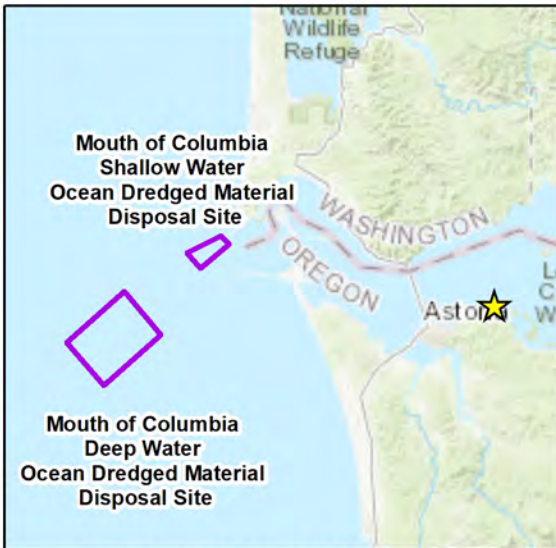
**Figure 1. Vicinity Map, USCG ANT Tongue Point, Maintenance Dredging Project**  
 Astoria, Oregon  
 September 2023

**Legend**

- ★ Site Location
- Potential Disposal Location
- - - 2023/2024 Dredge Footprint
- Maintenance Dredge Footprint (DMMU 1)



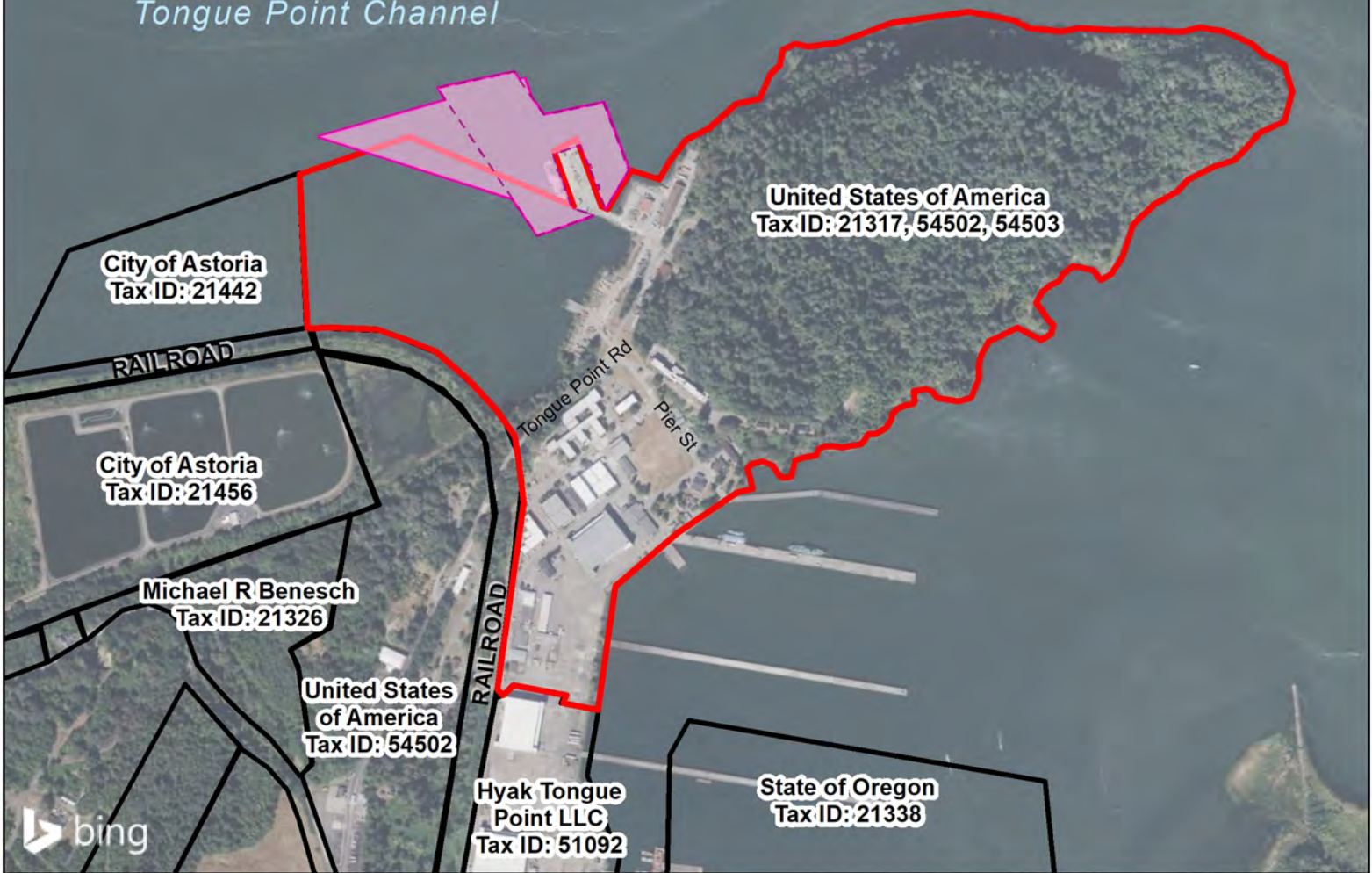
Document Path: H:\IT\GIS\USCG\CEU\Oakland\0203011 - Dredging\Figures\Tongue Point\SEPT 2023\_IPA Update and Vicinity - IPA - Tongue Point.mxd  
 HAH 3/23/2023, JMS 8/24/2023



**Dredged Material Disposal Site Options**

Columbia River

Tongue Point Channel

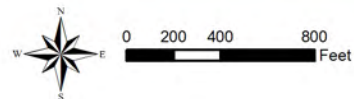


**Figure 2. Taxlot Map  
USCG ANT Tongue Point  
Maintenance Dredging  
Project**

Astoria, Oregon  
September 2023

**Legend**

- ★ Site Location
- ▭ Tax Parcel Boundaries
- ▭ USCG ANT Tongue Point Tax Parcel
- ▭ Potential Disposal Site
- ▭ 2023/2024 Dredge Footprint
- ▭ Maintenance Dredge Footprint (DMMU 1)



Document Path: H:\TIG\USCG\CEU\Oas\am\0203011 - Dredging\Figures\Tongue Point\SEPT 2023\_IPA Update\Figure 2 - Tax Lot Map - JPA - Tongue Point.mxd

**Mouth of Columbia  
Shallow Water  
Ocean Dredged  
Material Disposal Site**

46.264658, -124.095256

46.250797, -124.136519

46.258789, -124.086033

46.238239, -124.120706

46.219383, -124.211019

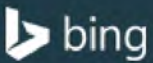
Columbia River

46.178022, -124.279578

46.184175, -124.167028

46.142839, -124.235575



**Mouth of Columbia  
Deep Water  
Ocean Dredged Material  
Disposal Site**

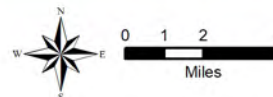


**Figure 3. Mouth of Columbia River ODMDS Location Map, USCG ANT Tongue Point, Maintenance Dredging Project**

Astoria, Oregon  
September 2023

**Legend**

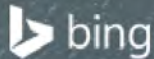
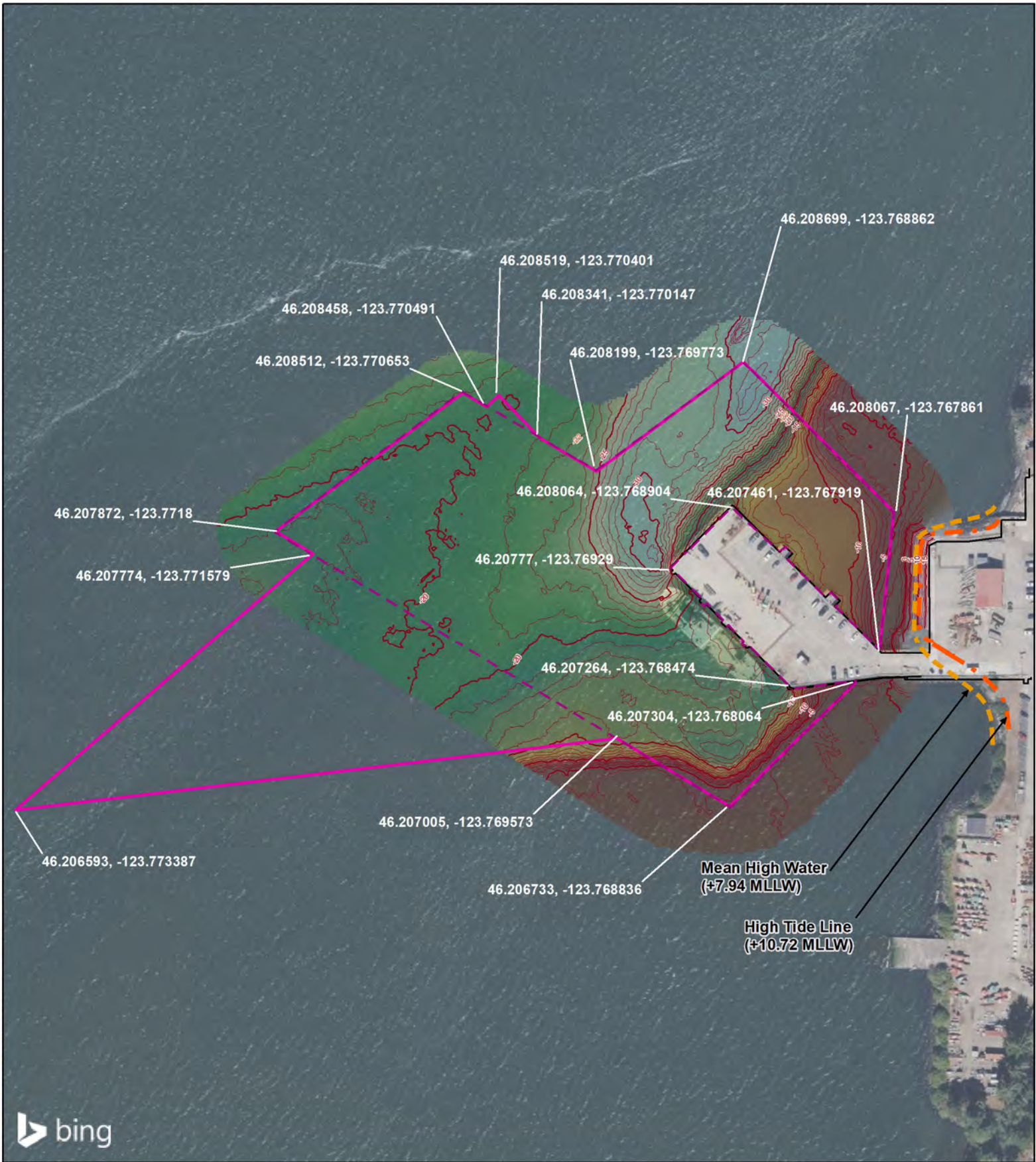
-  Site Location
-  Potential Disposal Site



NOTES:  
1. COORDINATES ARE IN NORTH AMERICAN DATUM 83 (NAD 83) DECIMAL DEGREES.  
2. COORDINATES OF THE OCEAN DREDGED MATERIAL DISPOSAL SITES ARE FROM THE FEDERAL REGISTER, (FINAL RULE), OCEAN DUMPING; DE-DESIGNATION OF OCEAN DREDGED MATERIAL DISPOSAL SITES AND DESIGNATION OF NEW SITES, 70 FR 10041 (MARCH 2, 2005)



Document Path: H:\TIG\USCG\CEU\Oas\am\0203011 - Dredging\Figures\Tongue Point\SEPT 2023\_JPA Update\Figure 3 - ODMDS Disposal Locations - JPA - Tongue Point.mxd



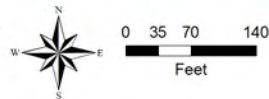
**Figure 4. High Tide Line and Mean High Water Mark, USCG ANT Tongue Point Maintenance Dredging Project**

Astoria, Oregon  
September 2023

**Legend**

- Mean High Water
- High Tide Line
- 2023/2024 Dredge Footprint
- Maintenance Dredge Footprint (DMMU 1)

- Existing Dock Infrastructure
- Bathymetric Contour**
- 5 ft
- 1 ft



**NOTES:**

1. BATHYMETRIC DATA IS FROM A SURVEY CONDUCTED BY DIXON MARINE SERVICES, INC. ON NOVEMBER 12, 2022 AND REPRESENTS THE SEAFLOOR CONDITIONS PRESENT ON THAT DATE.
2. HORIZONTAL DATUM IS BASED ON THE OREGON STATE PLANE COORDINATE SYSTEM, FIPS 3601 (NAD 83).
3. SOUNDINGS ARE IN FEET BELOW MLLW.
4. TIDE DATUM OBTAINED FROM TIDESANDCURRENTS.NOAA.GOV FOR NEAREST STATION (ASTORIA, OR).
5. DREDGE PRISM COORDINATES ARE IN NAD 83 DECIMAL DEGREES.



Document Path: H:\TIG\USCG\CEU\Astoria\0203011 - Dredging\Figures\Tongue Point\SEPT 2023\_IPA\Update\Figure 4 - Tide Levels - IPA - Tongue Point.mxd