



US Army Corps
of Engineers®
BUILDING STRONG®

Hurricane Ida Adv. 12

For Planning Purposes Only!

WASHINGTON, DC
07:46:43
29 Aug 2021

CHICAGO
06:46:43
29 Aug 2021

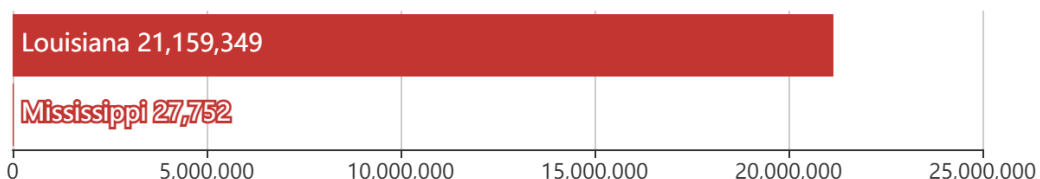
LOS ANGELES
04:46:43
29 Aug 2021

<https://go.usa.gov/xFSjZ>

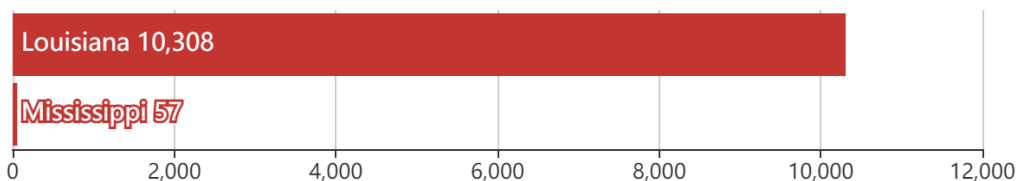
Updated as of 29 Aug 2021 (6:46 AM Central Daylight Time)

Debris

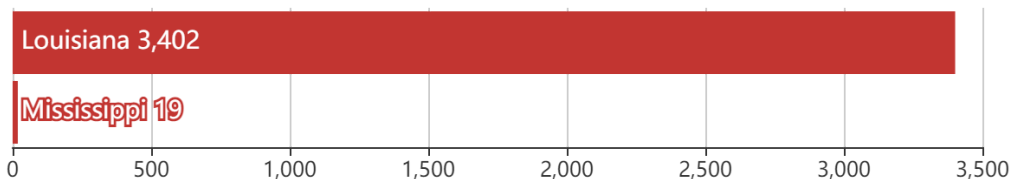
21.2M
cu. yd.



**Est. Temp.
Roofing**
10.4K
units

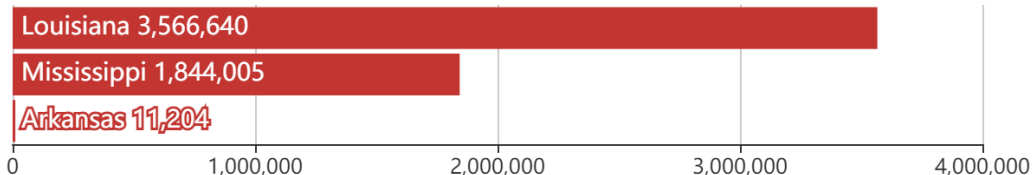


**Act. Temp.
Roofing**
3.4K
units



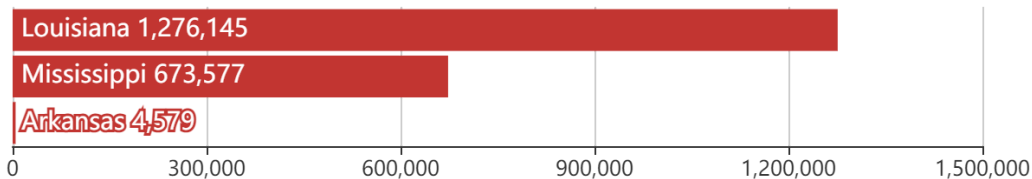
Population

5.4M
people



Households

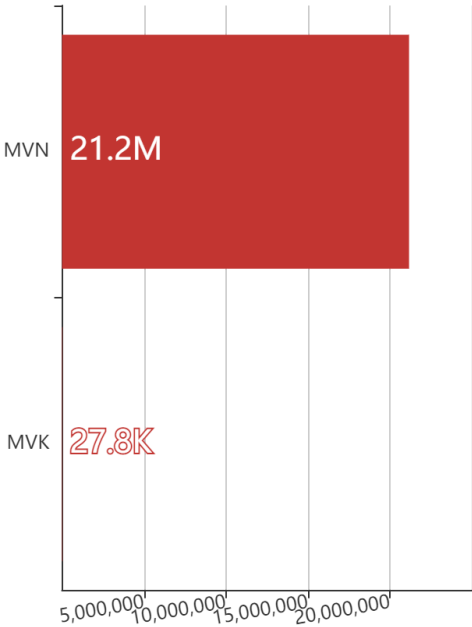
2M
households



Mission Model Summary

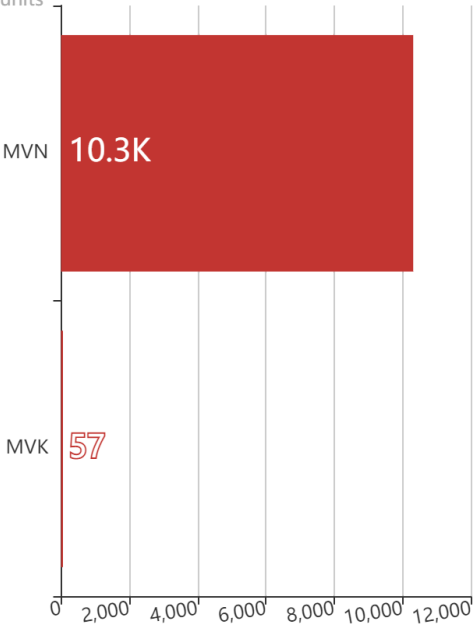
Debris By USACE District

cu. yd.

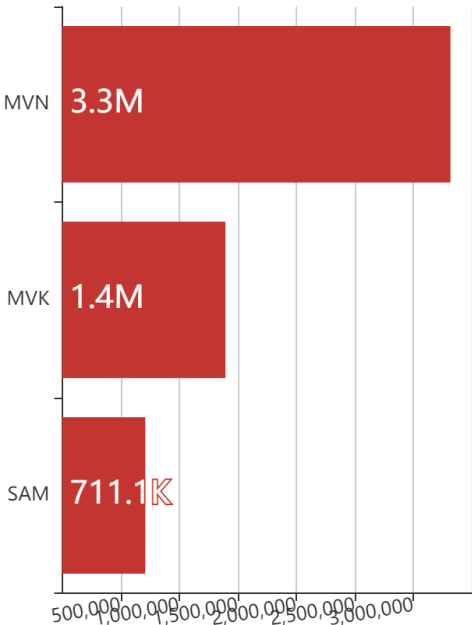


Est. Temp. Roofing By USACE District

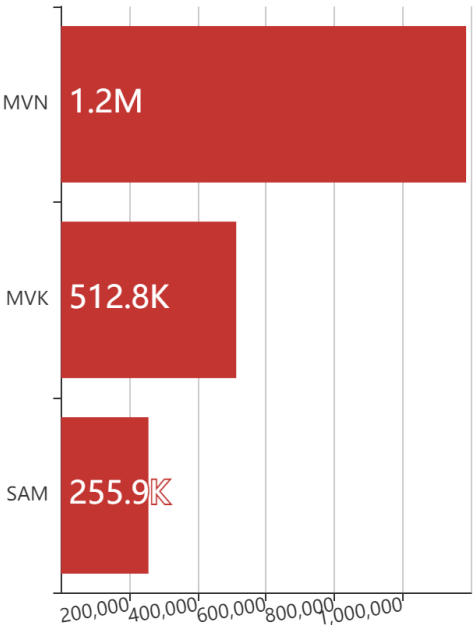
units



Population By USACE District



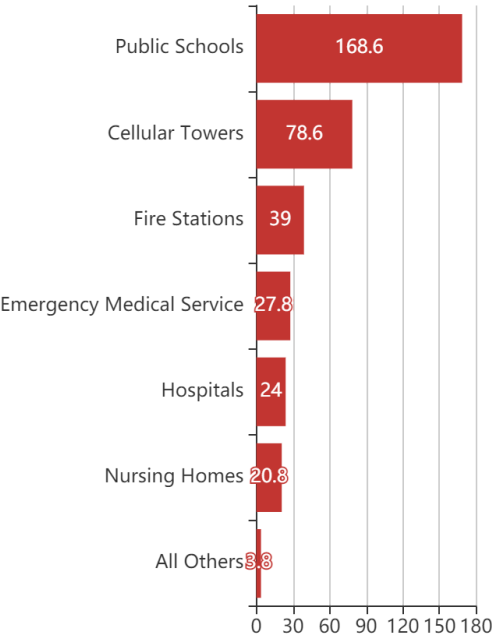
Households By USACE District



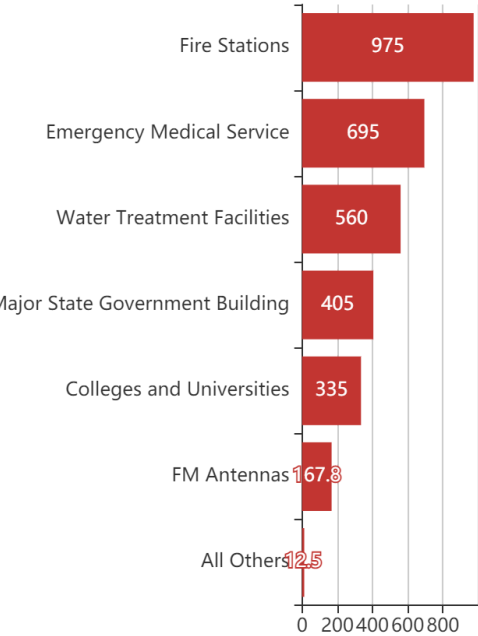
Critical Infrastructure Summary



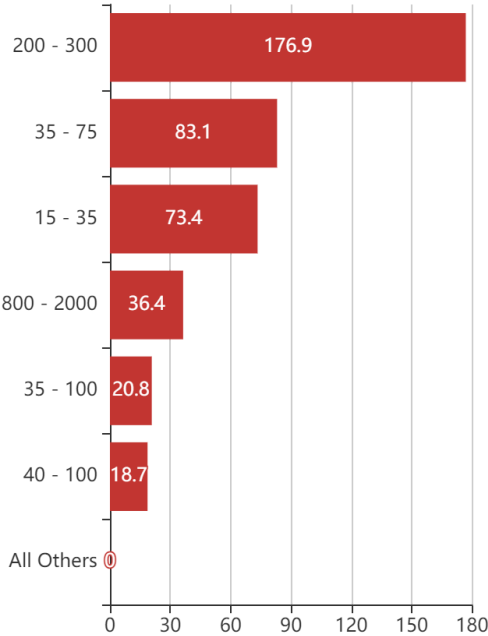
Generators
By Generator Count



Generators
By Power Requirement

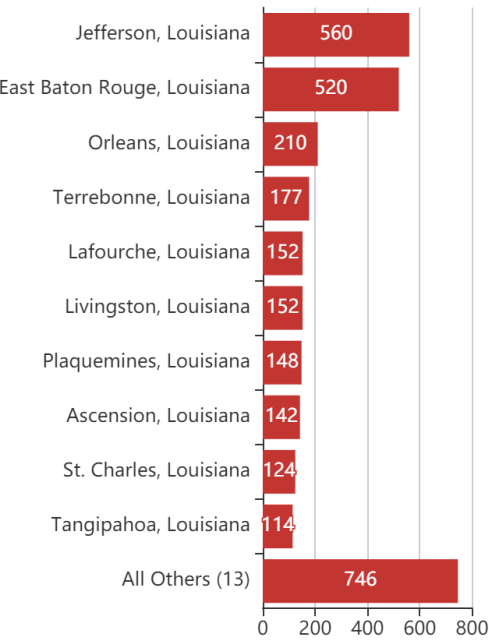


Generators
By Range



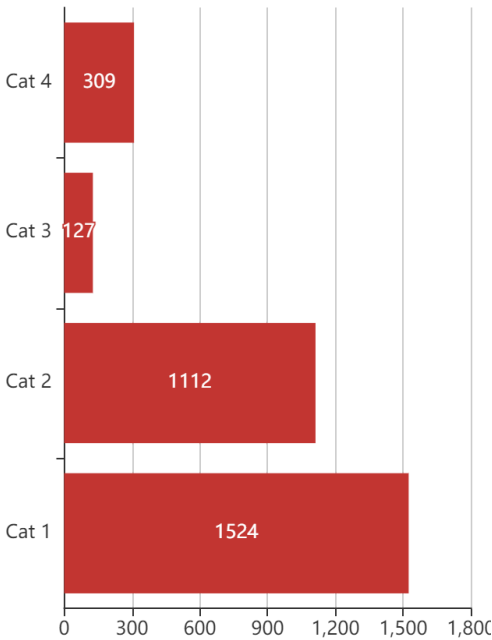
Structures

By County



Structures

By Intensity





Key Messages for Hurricane Ida

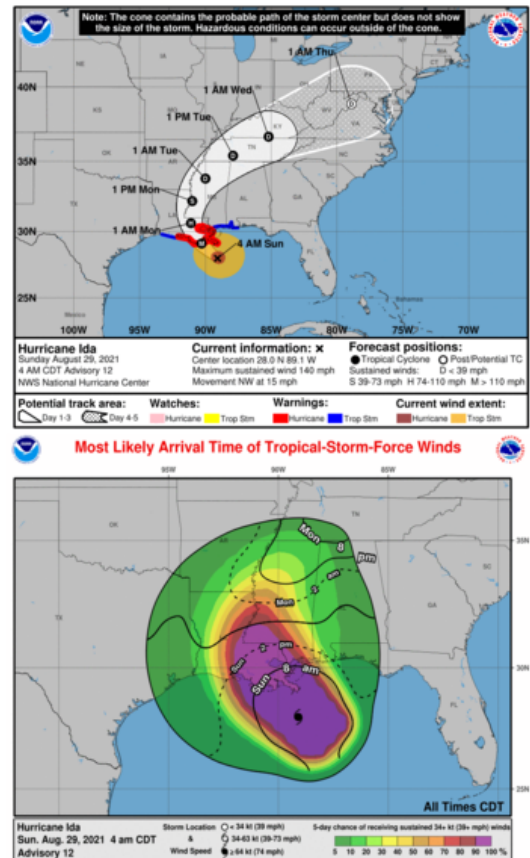
Advisory 12: 4:00 AM CDT Sun Aug 29, 2021

1. There is a danger of life-threatening storm surge inundation Sunday along the coasts of Louisiana, Mississippi, and Alabama within the Storm Surge Warning area. Extremely life-threatening inundation of 9 feet or greater above ground level is possible somewhere within the area from Morgan City, Louisiana, to the coast of Mississippi. Overtopping of local levees outside of the Hurricane and Storm Damage Risk Reduction System is possible where local inundation values may be higher. Interests throughout the warning area should follow any advice given by local officials.

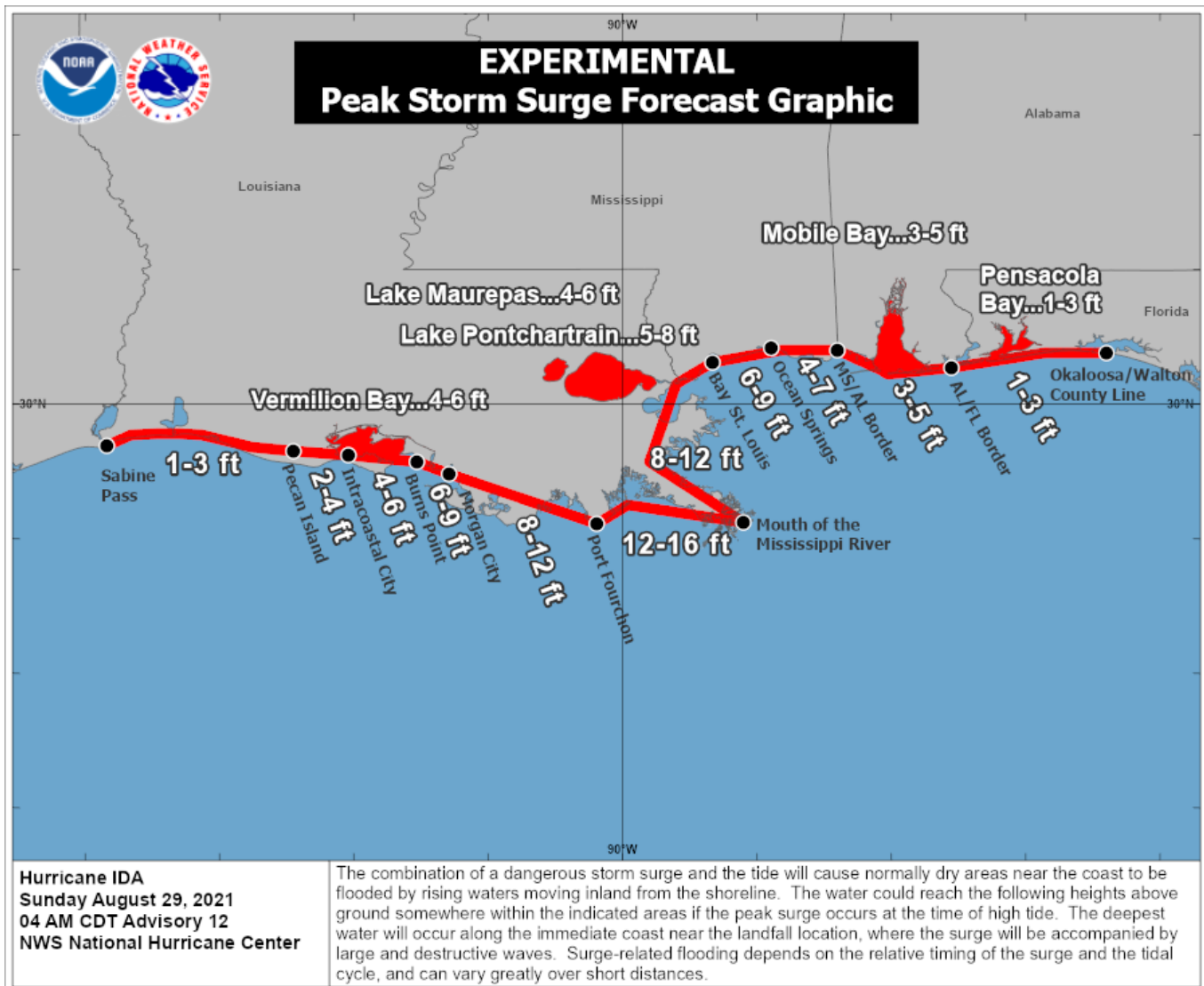
2. Ida is expected to be an extremely dangerous major hurricane when it reaches the coast of southeastern Louisiana. Hurricane-force winds are expected Sunday in portions of the Hurricane Warning area along the Louisiana coast, including metropolitan New Orleans, with potentially catastrophic wind damage possible where the core of Ida moves onshore. Actions to protect life and property should be rushed to completion in the warning area.

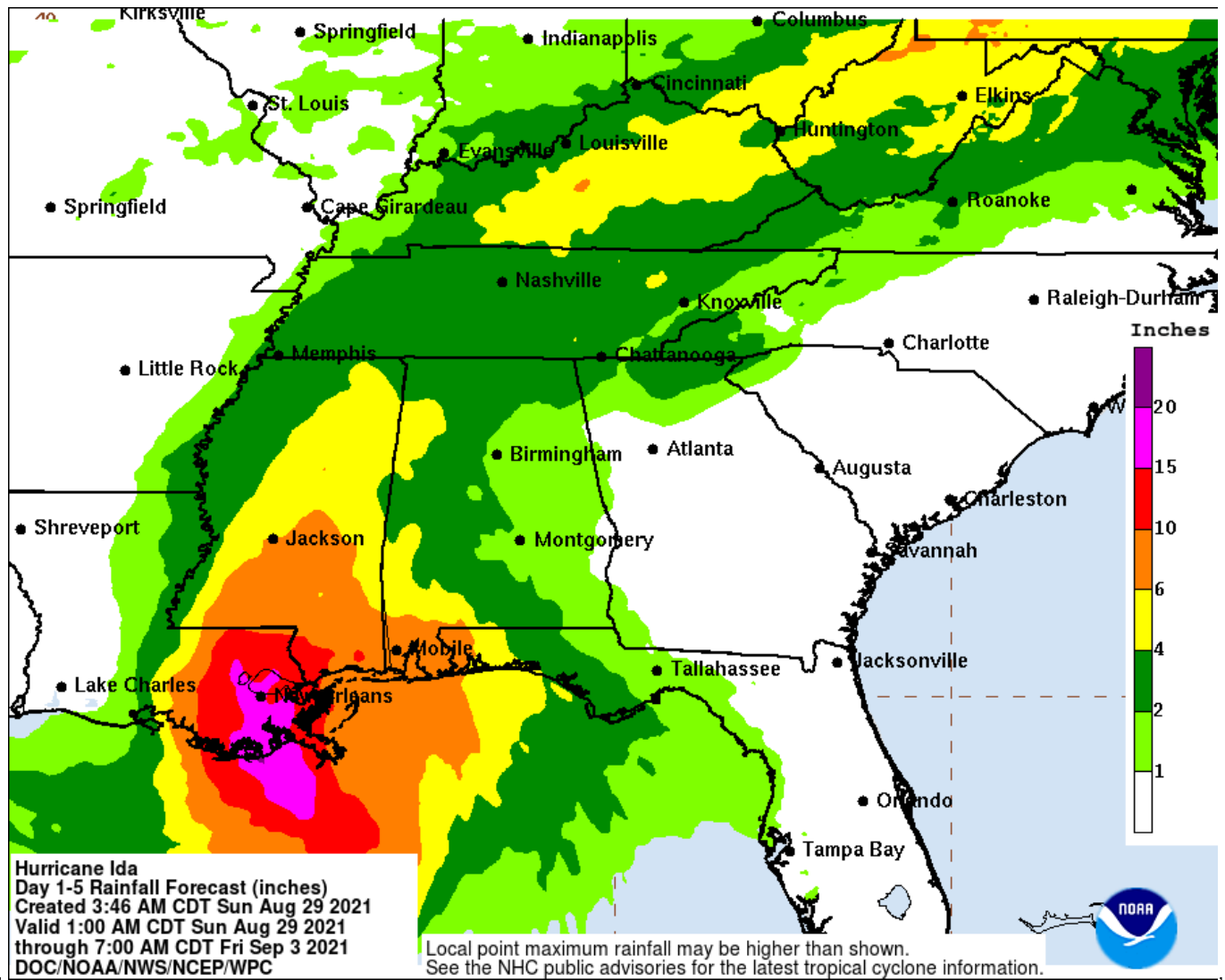
3. Damaging winds, especially in gusts, will spread inland near the track of the center of Ida across portions of southeastern Louisiana and southwestern Mississippi Sunday night and early Monday. These winds will likely lead to widespread tree damage and power outages.

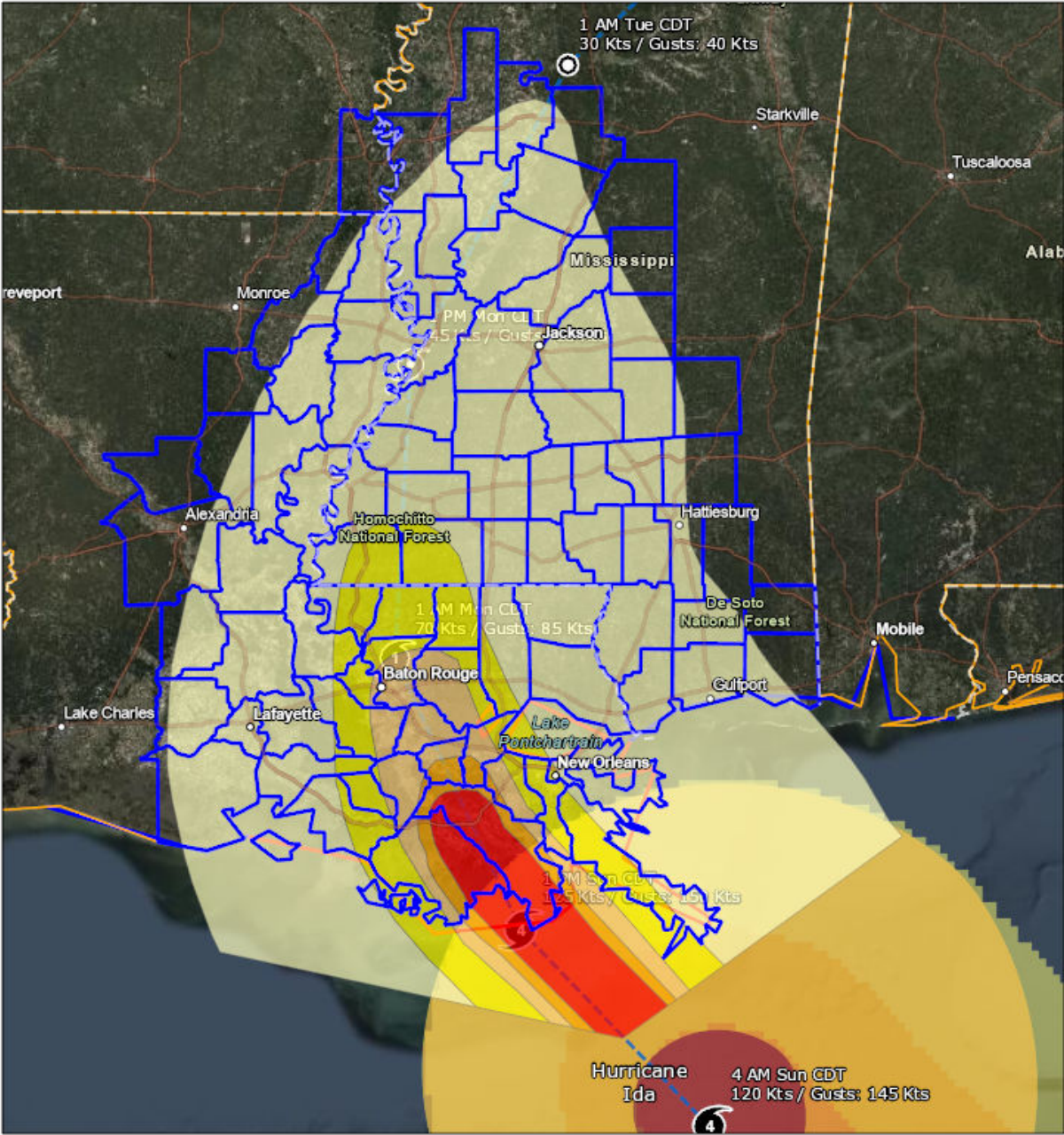
4. Ida will produce heavy rainfall today through Monday across the central Gulf Coast from southeastern Louisiana, coastal Mississippi, to far southwestern Alabama resulting in considerable to life-threatening flash and urban flooding and significant riverine flooding impacts. As Ida moves inland, significant flooding impacts are possible across portions of the Lower Mississippi, Tennessee, and Ohio Valleys through Wednesday.



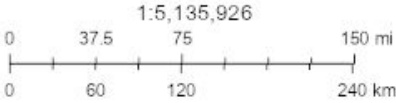
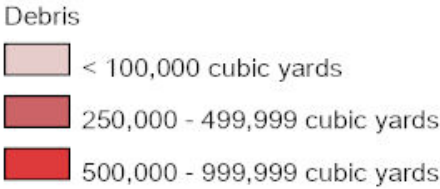
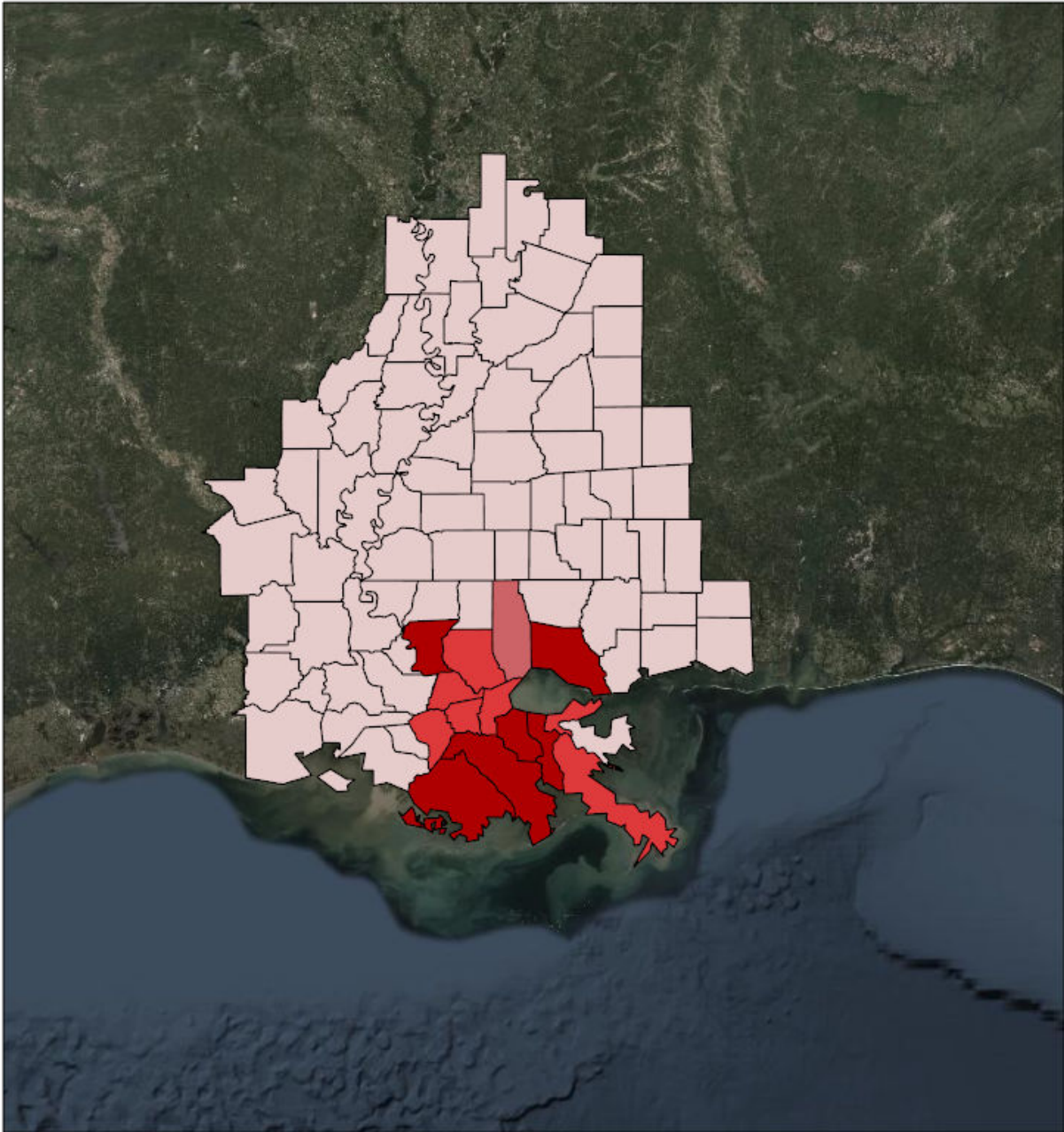
For more information go to hurricanes.gov







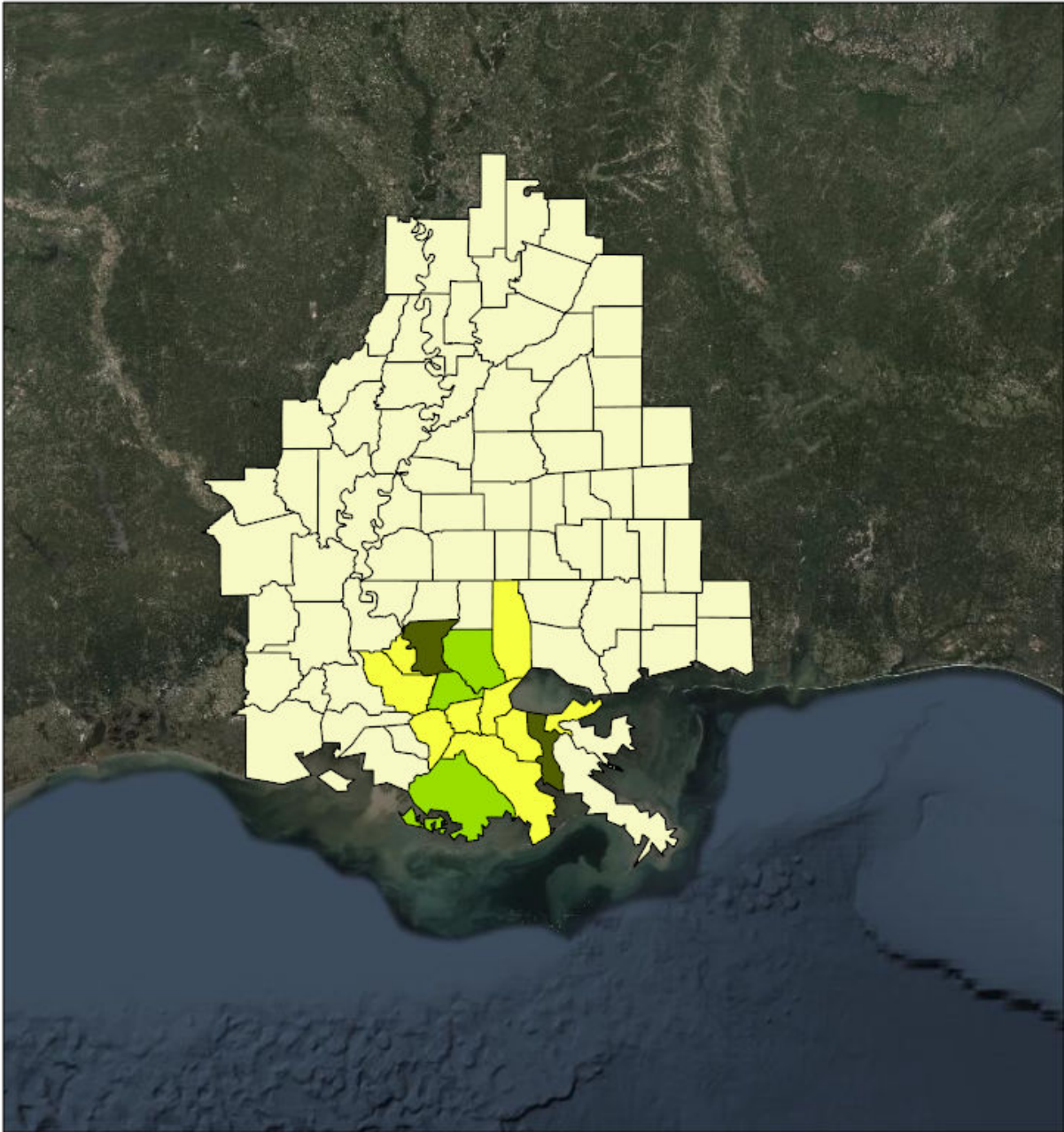
Debris



Source: Esri, DigitalGlobe, GeoEye, Earthstar Geographics, CNES/Airbus DS, USDA, USGS, AeroGRID, IGN, and the GIS User Community

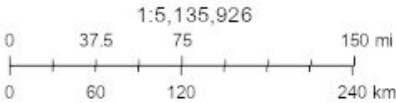
Created by SimSuite

Est. Temp. Roofing



Est. Temp. Roofing

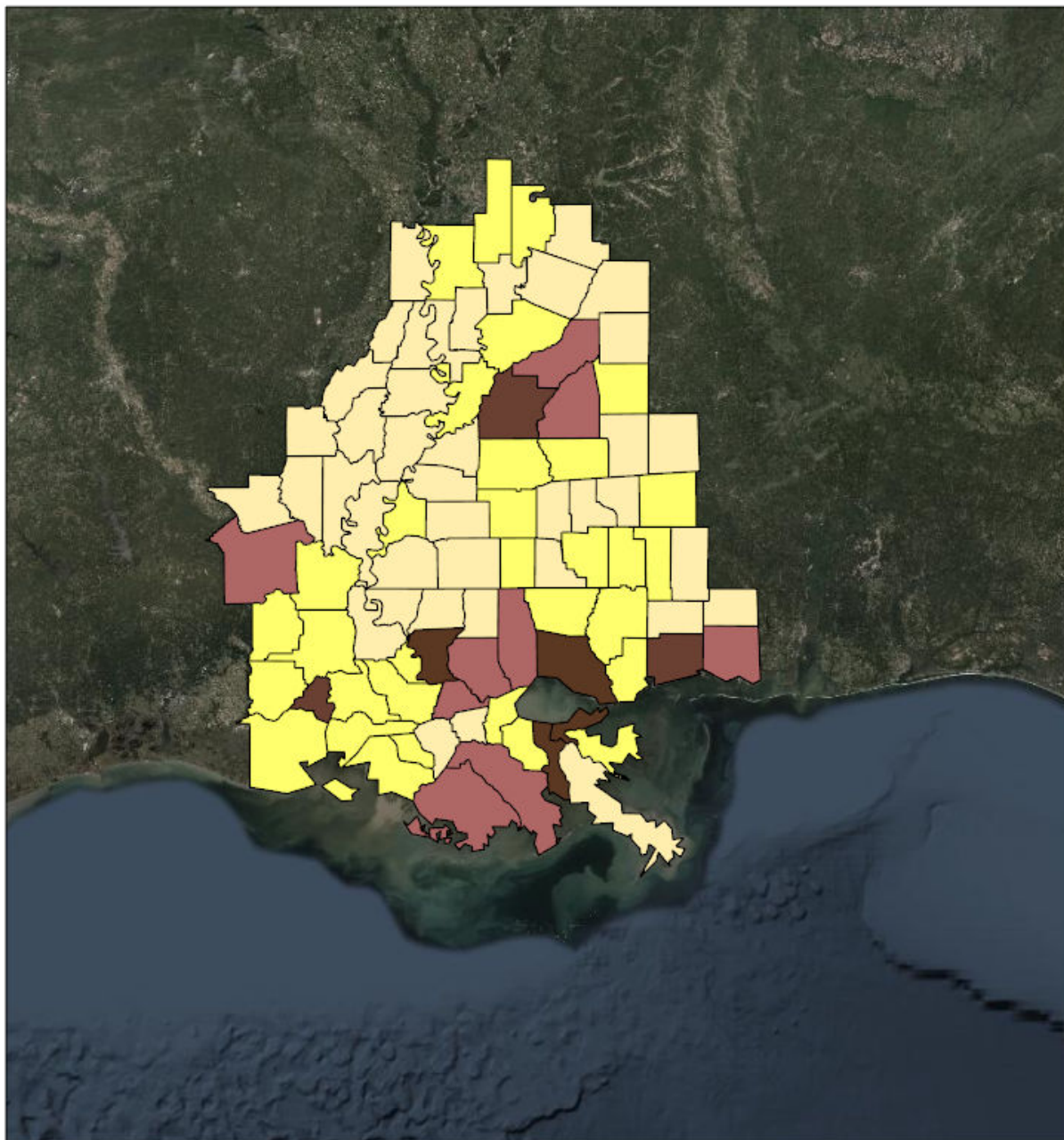
- < 100 units
- 100 - 499 units
- 500 - 999 units



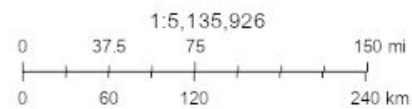
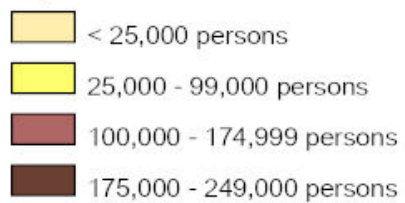
Source: Esri, DigitalGlobe, GeoEye, Earthstar Geographics, CNES/Airbus DS, USDA, USGS, AeroGRID, IGN, and the GIS User Community

Created by SimSuite

Population



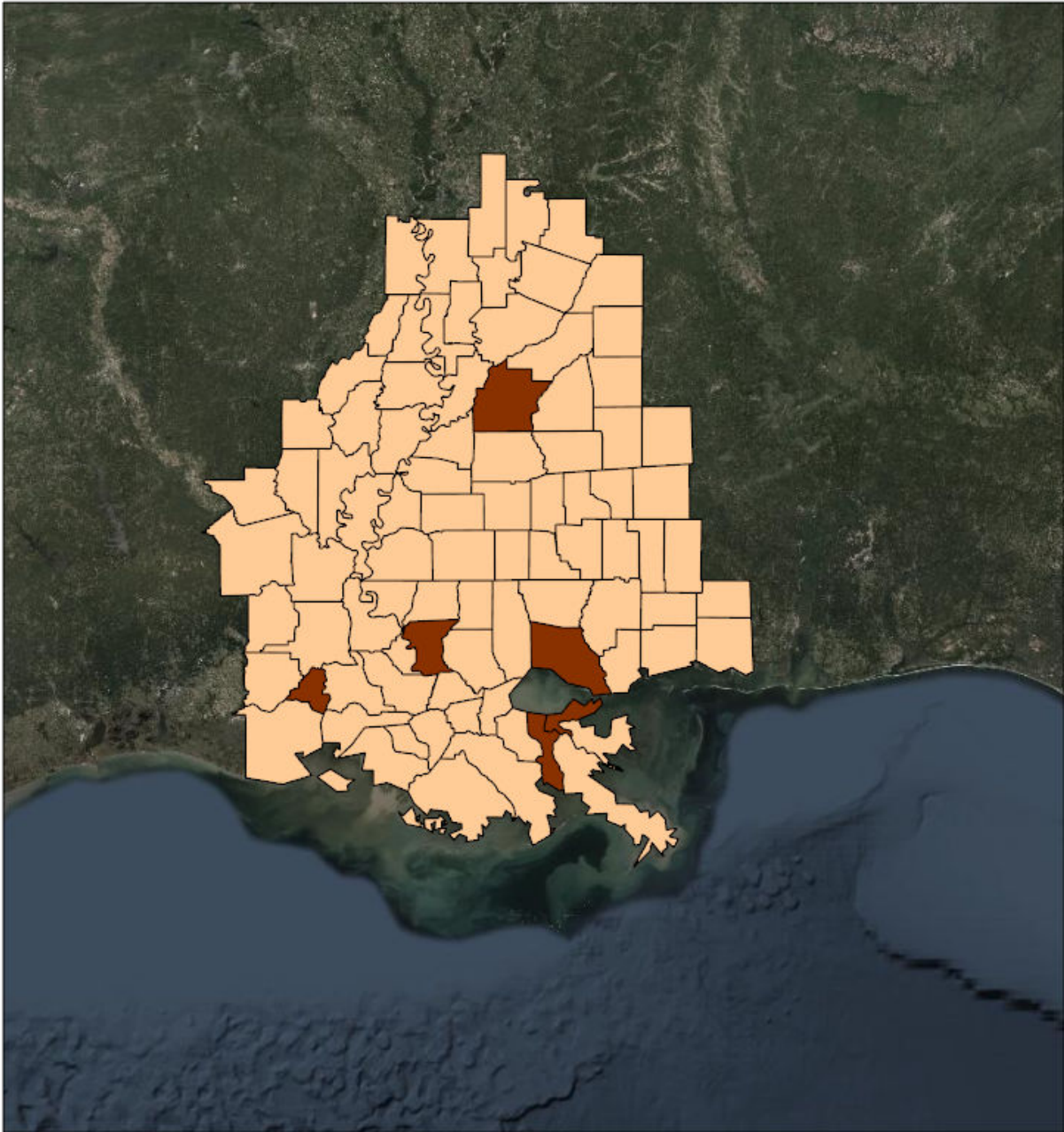
Population






Source: Esri, DigitalGlobe, GeoEye, Earthstar Geographics, CNES/Airbus DS, USDA, USGS, AeroGRID, IGN, and the GIS User Community

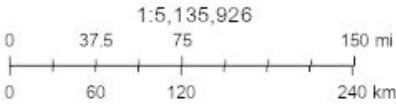
Created by SimSuite

Households



Households

-  < 7,500 Households
-  15,000 - 24,999 Households
-  25,000 - 49,999 Households



Source: Esri, DigitalGlobe, GeoEye, Earthstar Geographics, CNES/Airbus DS, USDA, USGS, AeroGRID, IGN, and the GIS User Community

Created by SimSuite

Mission Summary



The mission models account for storm surge and wind damage only, but do not account for other related storm hazards that may affect the mission estimates.

Mission Summary	
Total Counties	87
Debris (cu. yd.)	21,187,102
Est. Temp. Roofing (units)	10,365
Act. Temp. Roofing (units)	3,420
Population	5,421,849
Households	1,954,301

Population Distribution	
Tropical Storm	3,169,045
Category 1	890,027
Category 2	694,931
Category 3	75,871
Category 4	114,477

ARKANSAS	Yds of Debris (0)	Est. Roof Units (0)	Act. Roof Units (0)	Population (11,204)	Households (4,579)
Chicot	0	0	0	11,204	4,579

LOUISIANA	Yds of Debris (21,159,349)	Est. Roof Units (10,308)	Act. Roof Units (3,402)	Population (3,566,640)	Households (1,276,145)
Acadia	0	0	0	64,233	22,841
Ascension	938,817	914	302	124,274	37,790
Assumption	925,250	208	69	24,326	8,736
Avoyelles	0	0	0	43,493	15,432
Caldwell	0	0	0	10,242	3,905
Catahoula	0	0	0	10,384	3,834
Concordia	0	0	0	20,789	7,613
East Baton Rouge	2,493,943	3,259	1,075	455,183	172,057
East Carroll	0	0	0	7,690	2,552
East Feliciana	35,602	73	24	20,133	7,022
Evangeline	0	0	0	35,225	12,829
Franklin	0	0	0	21,409	7,904
Grant	0	0	0	23,270	7,496
Iberia	20,162	41	14	74,654	26,778
Iberville	96,720	139	46	34,675	11,072
Jefferson	1,243,590	2,093	691	436,044	169,647
La Salle	0	0	0	15,517	5,468
Lafayette	0	0	0	249,487	87,027
Lafourche	3,810,365	449	148	102,036	35,486

Livingston	718,696	918	303	142,761	46,007
Madison	0	0	0	11,737	4,025
Orleans	864,889	169	56	378,952	142,158
Plaquemines	671,586	50	17	24,106	8,077
Pointe Coupee	10,405	21	7	22,931	9,082
Rapides	0	0	0	138,904	50,401
Richland	0	0	0	21,497	7,551
St. Bernard	0	0	0	42,016	13,221
St. Charles	1,488,409	361	119	55,762	18,557
St. Helena	20,300	42	14	11,008	4,333
St. James	804,414	213	70	22,785	7,717
St. John the Baptist	649,159	352	116	46,127	15,965
St. Landry	0	0	0	85,834	31,857
St. Martin	26,157	54	18	55,795	19,216
St. Mary	46,255	93	31	54,463	20,457
St. Tammany	1,597,433	0	0	259,212	87,521
Tangipahoa	366,135	140	46	133,414	45,135
Tensas	0	0	0	5,076	2,172
Terrebonne	4,246,130	576	190	116,998	40,091
Vermilion	0	0	0	61,784	21,889
Washington	0	0	0	48,152	18,113
West Baton Rouge	71,968	116	38	26,881	8,688
West Carroll	0	0	0	11,522	4,452
West Feliciana	12,965	27	9	15,859	3,971

MISSISSIPPI	Yds of Debris (27,752)	Est. Roof Units (57)	Act. Roof Units (19)	Population (1,844,005)	Households (673,577)
Adams	0	0	0	31,160	12,643
Amite	16,831	35	11	12,545	5,351
Attala	0	0	0	19,396	7,619
Carroll	0	0	0	10,960	4,188
Claiborne	0	0	0	9,331	3,440
Copiah	0	0	0	29,484	10,708
Covington	0	0	0	20,137	7,430
Forrest	0	0	0	75,662	28,746
Franklin	165	0	0	8,081	3,211
George	0	0	0	23,759	7,982
Hancock	0	0	0	48,810	17,380
Harrison	0	0	0	205,027	71,476
Hinds	0	0	0	243,165	91,351
Holmes	0	0	0	18,437	6,926
Humphreys	0	0	0	8,556	3,373
Issaquena	0	0	0	1,325	472
Jackson	0	0	0	144,768	52,205
Jasper	0	0	0	17,125	6,798
Jefferson	0	0	0	7,644	2,929
Jefferson Davis	0	0	0	11,776	4,977
Jones	0	0	0	69,444	25,247
Lamar	0	0	0	58,929	21,542
Lawrence	0	0	0	13,333	5,078
Leake	0	0	0	22,438	8,272
Leflore	0	0	0	31,148	11,577
Lincoln	0	0	0	35,319	13,296
Madison	0	0	0	107,968	35,829
Marion	0	0	0	26,158	10,135
Pearl River	0	0	0	56,827	20,816
Perry	0	0	0	12,551	4,674
Pike	0	0	0	40,438	15,370
Rankin	0	0	0	150,867	52,836
Scott	0	0	0	29,480	10,248
Sharkey	0	0	0	4,786	1,834
Simpson	0	0	0	27,769	10,330
Smith	0	0	0	16,696	6,221
Stone	0	0	0	18,163	6,165
Sunflower	0	0	0	26,622	8,822
Walthall	0	0	0	14,801	5,888
Warren	0	0	0	48,277	18,941
Washington	0	0	0	48,082	18,936
Wilkinson	10 757	22	7	9 239	3 455

Yazoo	0	0	0	27,522	8,860
-------	---	---	---	--------	-------

Critical Infrastructure

Summary			
Total Critical Facilities		3,072	
Power Requirements (kW)		108,345.9	
Range (kW)			
Communications	# FED Gen Req	Range (kW)	Req kW
AM Antennas (28)	1.4	35 - 75	77.0
Cellular Towers (131)	78.6	35 - 75	4,323.0
FM Antennas (61)	3.1	35 - 75	167.8
Education	# FED Gen Req	Range (kW)	Req kW
Private Schools (193)	0.0	200 - 300	0.0
Public Schools (562)	168.6	200 - 300	42,150.0
Colleges and Universities (67)	1.3	200 - 300	335.0
Emergency Services	# FED Gen Req	Range (kW)	Req kW
911 Call Centers (1)	0.1	15 - 35	2.5
Emergency Medical Service (278)	27.8	15 - 35	695.0
Fire Stations (390)	39.0	15 - 35	975.0
Service Providers (1)	0.0	0 - 0	0.0
Healthcare	# FED Gen Req	Range (kW)	Req kW
Nursing Homes (139)	20.8	35 - 100	1,407.4
Hospitals (80)	24.0	800 - 2000	33,600.0
Urgent Care Facilities (35)	7.0	200 - 300	1,750.0
Military	# FED Gen Req	Range (kW)	Req kW
Air National Guard (ANG) Sites (2)	0.0	15 - 35	0.0
Army National Guard (ARNG) Sites (18)	0.0	15 - 35	0.0
National Security Government Military Facilities (161)	0.0	15 - 35	0.0
Law Enforcement	# FED Gen Req	Range (kW)	Req kW
Prison Points (35)	7.0	400 - 600	3,500.0
Local Police (59)	5.9	15 - 35	147.5
State Police (7)	0.4	15 - 35	8.8
Correctional Facilities (0)	0.0	400 - 600	0.0
State and Local EOC	# FED Gen Req	Range (kW)	Req kW
Local Emergency Operations Centers (23)	4.6	15 - 40	126.5
State Emergency Operation Centers (EOCs) (1)	0.2	15 - 35	5.0

State Facilities	# FED Gen Req	Range (kW)	Req kW
Governors Mansion (1)	0.0	100 - 200	0.0
Major State Government Building (27)	2.7	100 - 200	405.0

Transportation	# FED Gen Req	Range (kW)	Req kW
Ports (489)	0.0	600 - 1200	0.0
Amtrak Stations (4)	0.0	100 - 300	0.0
Bus Stations (60)	0.0	100 - 300	0.0
Intermodal Terminal Facilities (29)	0.0	100 - 300	0.0
Railroad Stations (3)	0.0	100 - 300	0.0
Public-Use Airports (156)	18.7	40 - 100	1,310.4

Water	# FED Gen Req	Range (kW)	Req kW
Water Treatment Facilities (1)	0.4	800 - 2000	560.0
Wastewater Treatment Plants (30)	12.0	800 - 2000	16,800.0

COVID-19

#	County	Cases
1	Jefferson	65,340
2	East Baton Rouge	58,416
3	Orleans	43,361
4	St. Tammany	39,777
5	Lafayette	34,858
6	Harrison	28,793
7	Hinds	28,436
8	Livingston	22,291
9	Tangipahoa	20,978
10	Jackson	20,795
11	Ascension	19,952
12	Rankin	19,385
13	Rapides	18,539
14	Terrebonne	17,784
15	Lafourche	16,391
16	Madison	12,941
17	St. Landry	12,418
18	Forrest	11,911
19	Jones	11,761
20	Iberia	11,197
21	Acadia	9,346
22	Lamar	9,311
23	Vermilion	8,883
24	St. Charles	8,289
25	St. Mary	7,782
26	St. Martin	7,617
27	Pearl River	7,521
28	Washington	7,069
29	St. Bernard	6,351
30	Hancock	6,311
31	Avoyelles	6,247
32	Washington	6,198
33	Washington	6,198
34	Warren	5,870
35	St. John the Baptist	5,816
36	Iberville	5,446
37	Evangeline	5,044
38	Pike	4,797
39	Lincoln	4,731

40	East Feliciana	4,250
41	Leflore	4,163
42	West Baton Rouge	4,130
43	Scott	4,086
44	Adams	3,947
45	George	3,904
46	Yazoo	3,883
47	Sunflower	3,850
48	Copiah	3,831
49	Simpson	3,825
50	Covington	3,759
51	Franklin	3,714
52	Marion	3,646
53	Leake	3,596
54	Richland	3,559
55	Plaquemines	3,558
56	Pointe Coupee	3,522
57	Assumption	3,336
58	Grant	3,316
59	Stone	3,135
60	St. James	3,041
61	Jasper	2,855
62	Attala	2,852
63	Concordia	2,792
64	Holmes	2,368
65	LaSalle	2,329
66	Smith	2,240
67	Madison	1,903
68	Lawrence	1,852
69	Chicot	1,830
70	Walthall	1,826
71	Perry	1,723
72	Amite	1,716
73	West Carroll	1,581
74	Catahoula	1,567
75	Caldwell	1,523
76	Jefferson Davis	1,511
77	Carroll	1,468
78	West Feliciana	1,409
79	East Carroll	1,399
80	St. Helena	1,226
81	Claiborne	1,192
82	Humphreys	1,127
83	Franklin	1,029

84	Wilkinson	925
85	Jefferson	819
86	Sharkey	573
87	Tensas	434
88	Issaquena	184