



US Army Corps of Engineers  
BUILDING STRONG®

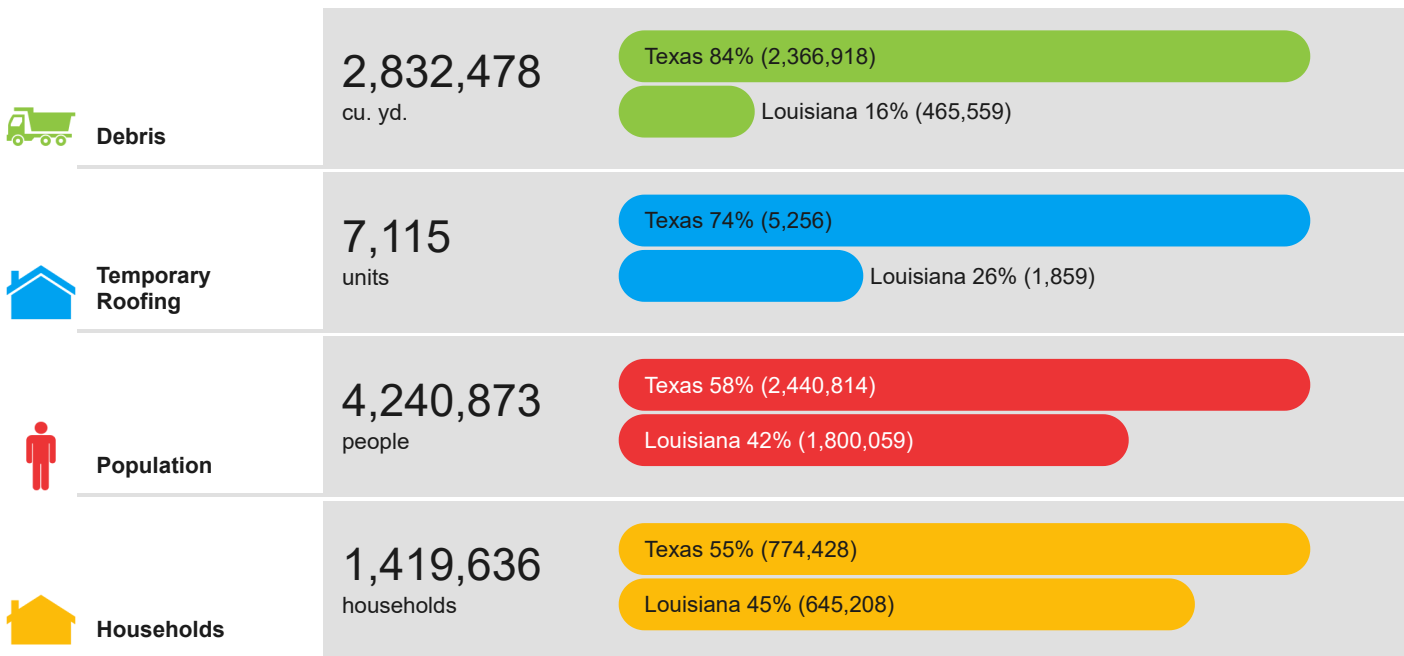
# Hurricane Laura Adv. #24

For Planning Purposes Only!

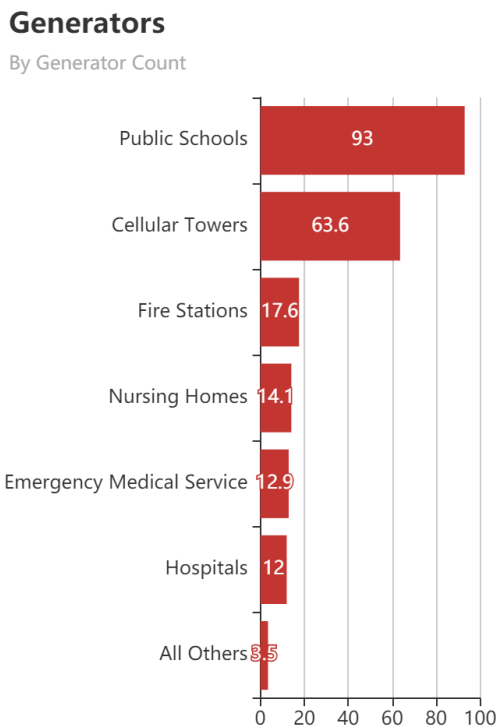
WASHINGTON, DC 18:07:30 25 Aug 2020	CHICAGO 17:07:30 25 Aug 2020	LOS ANGELES 15:07:30 25 Aug 2020
---	------------------------------------	--

[https://simsuite.usace.army.mil/wab/v2.15/MissionModels/index.html?\\_65=152](https://simsuite.usace.army.mil/wab/v2.15/MissionModels/index.html?_65=152)

Updated as of 25 Aug 2020 (5:07 PM Central Daylight Time)



## Critical Infrastructure Summary





# Key Messages for Hurricane Laura

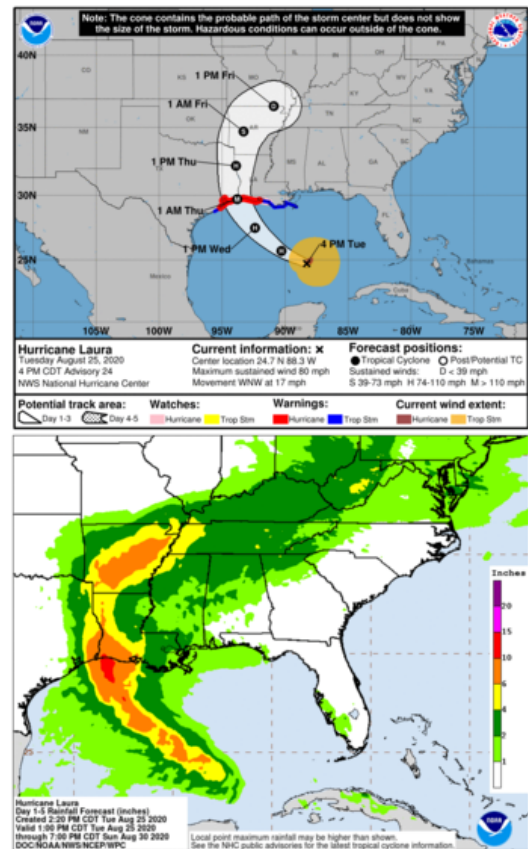
## Advisory 24: 4:00 PM CDT Tue Aug 25, 2020



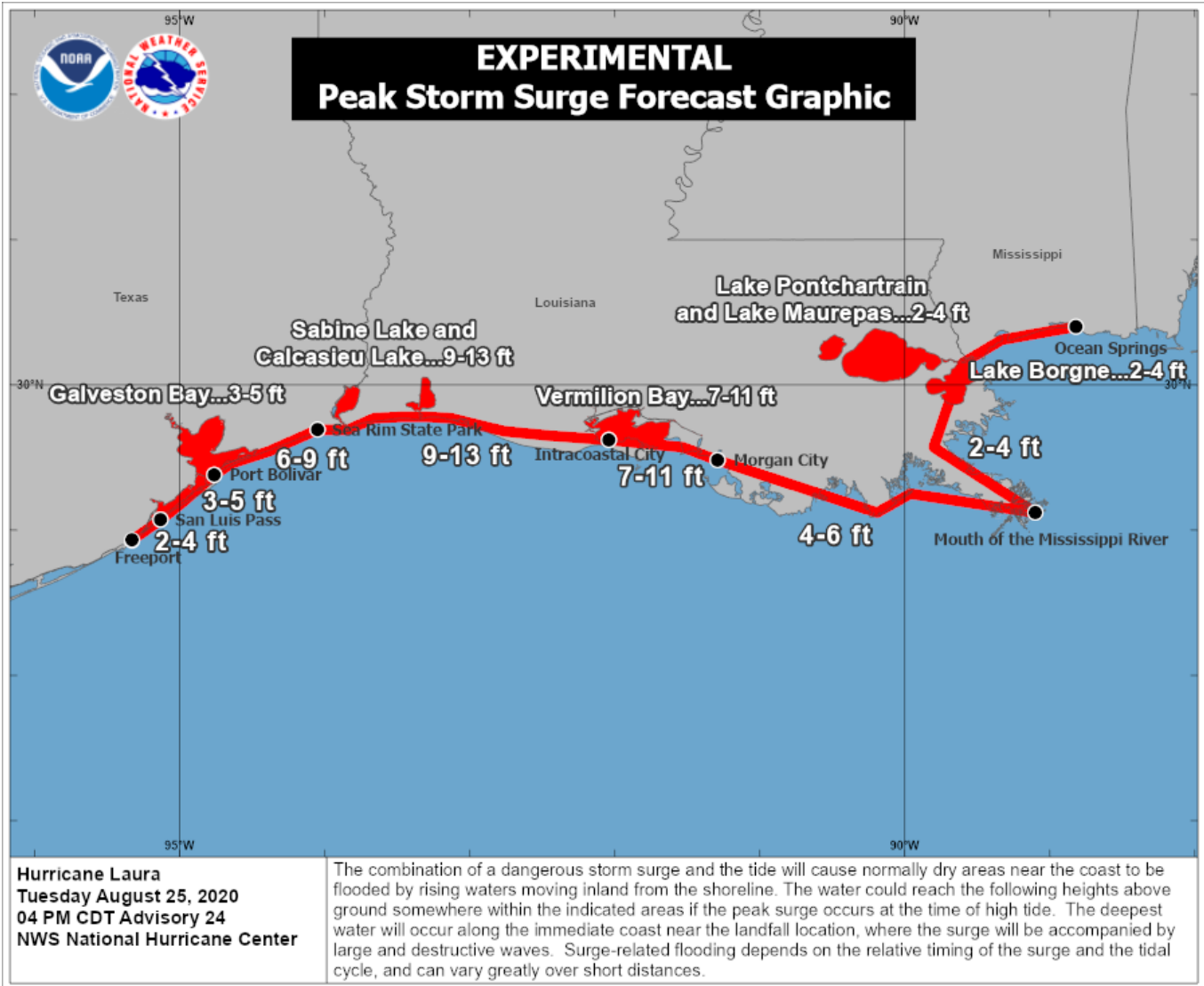
1. There is a danger of life-threatening storm surge with large and dangerous waves producing potentially catastrophic damage from San Luis Pass, Texas, to the Mouth of the Mississippi River, including areas inside the Port Arthur Hurricane Flood Protection system. This surge could penetrate up to 30 miles inland from the immediate coastline in southwestern Louisiana and far southeastern Texas. Actions to protect life and property should be rushed to completion this evening, as water levels will begin to rise on Wednesday.

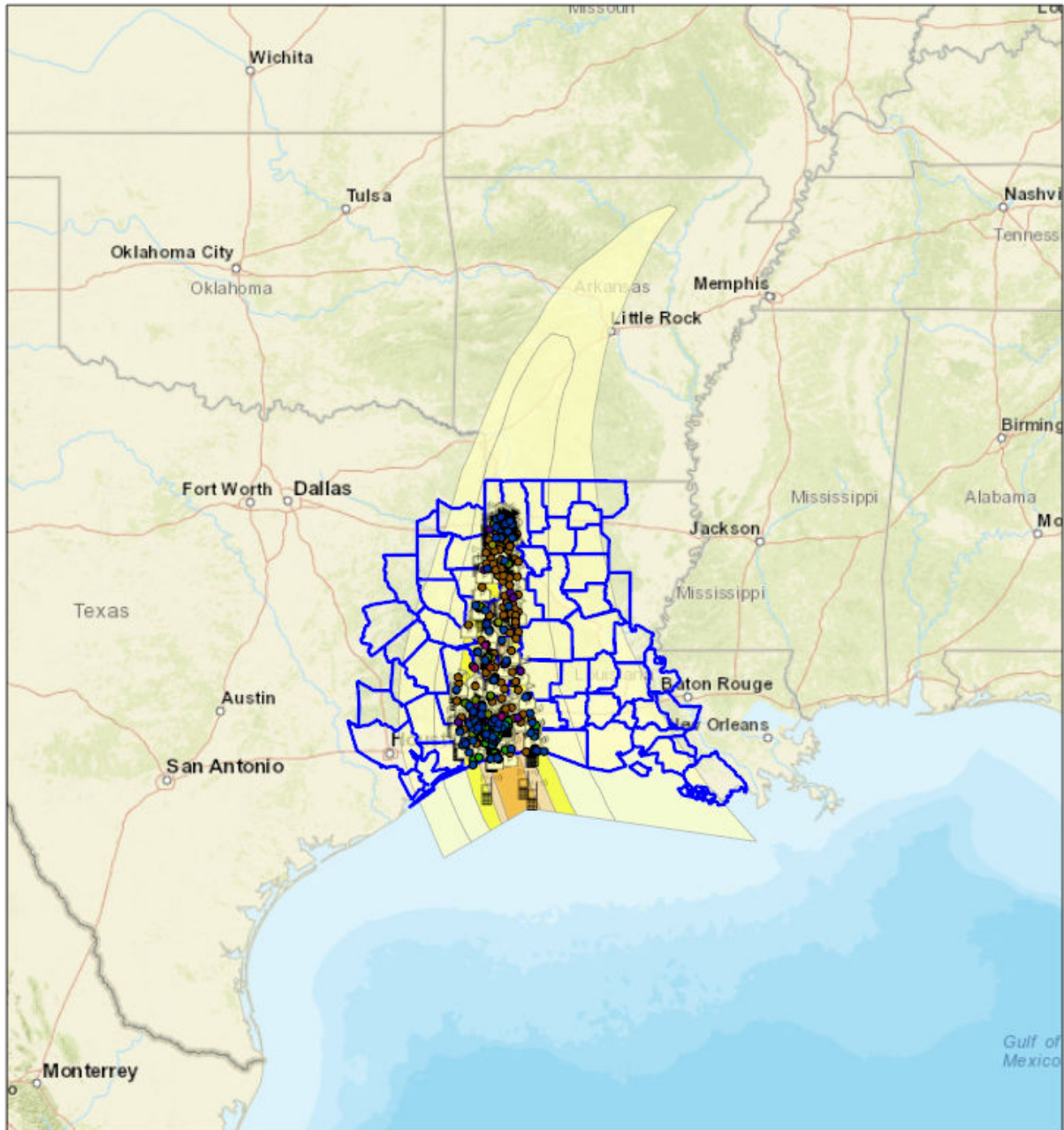
2. Hurricane-force winds are expected Wednesday night in the warning area from San Luis Pass, Texas, to west of Morgan City, Louisiana, and the strongest winds associated with Laura's eyewall will occur somewhere within this area. Hurricane-force winds and widespread damaging wind gusts are also expected to spread well inland into portions of eastern Texas and western Louisiana early Thursday.

3. The threat of widespread flash and urban flooding along with small streams overflowing their banks will increase due to heavy rainfall Wednesday night into Thursday from far eastern Texas, across Louisiana, and Arkansas. This will also result in minor to isolated moderate river flooding. The heavy rainfall threat will spread northeastward into the middle-Mississippi, lower Ohio and Tennessee Valleys Friday night and Saturday.

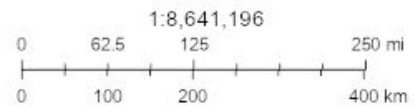


For more information go to [hurricanes.gov](https://hurricanes.gov)





- Structures
- AM Antennas
  - Cellular Towers
  - FM Antennas
  - Private Schools
  - Public Schools
  - Colleges and Universities
  - 911 Call Centers



Sources: Esri, HERE, Garmin, USGS, Intermap, INCREMENT P, NRCan, Esri Japan, METI, Esri China (Hong Kong), Esri Korea, Esri (Thailand), NGCC, (c) OpenStreetMap contributors, and the GIS User Community, NOAA/NOS/OCS nowCOAST, NOAA/NWS/NHC, NOAA/NWS/CPHC

Created by SimSuite

## Mission Summary



The mission models account for storm surge and wind damage only, but do not account for other related storm hazards that may affect the mission estimates.

<b>Mission Summary</b>	
Total Counties	59
Debris (cu. yd.)	2,832,478
Temporary Roofing (units)	7,115
Population	4,240,873.13
Households	1,419,635.889
<b>Population Distribution</b>	
Tropical Storm	3,517,551
Category 1	415,120
Category 2	168,854
Category 3	125,304

<b>LOUISIANA</b>	<b>Yards of Debris (465,559)</b>	<b>Roof Units (1,859)</b>	<b>Population (1,800,059)</b>	<b>Households (645,208)</b>
Acadia	0	0	60,988	21,142
Allen	0	0	25,819	8,102
Avoyelles	0	0	18,404	6,393
Beauregard	15,002	62	35,094	12,104
Bienville	0	0	14,864	6,108
Bossier	12,962	60	113,582	36,628
Caddo	156,539	721	254,856	97,974
Calcasieu	211,768	754	187,702	68,641
Cameron	22,276	48	7,338	3,592
Claiborne	0	0	16,230	6,270
De Soto	28,775	133	26,528	9,692
Evangeline	0	0	36,010	12,736
Grant	0	0	21,735	7,073
Iberia	0	0	75,402	25,381
Iberville	0	0	253	82
Jackson	0	0	15,165	6,086
Jefferson Davis	0	0	31,374	11,480
La Salle	0	0	2,815	1,051
Lafayette	0	0	210,850	72,372
Lincoln	0	0	42,709	15,235
Natchitoches	0	0	39,823	14,263
Pointe Coupee	0	0	95	35
Rapides	0	0	133,492	47,120
Red River	203	1	9,256	3,414
Sabine	17,423	78	23,654	9,220
St. Landry	0	0	93,358	32,328
St. Martin	0	0	52,518	17,164
St. Mary	0	0	50,951	19,317
Terrebonne	0	0	33,675	10,987
Union	0	0	6,883	2,694
Vermilion	0	0	56,868	19,832
Vernon	611	3	45,282	18,260
Webster	0	0	41,058	16,501
Winn	0	0	15,430	5,930

<b>TEXAS</b>	<b>Yards of Debris (2,366,918)</b>	<b>Roof Units (5,256)</b>	<b>Population (2,440,814)</b>	<b>Households (774,428)</b>
Angelina	7,585	35	83,815	28,687
Chambers	170	1	33,615	9,135
Cherokee	0	0	2,529	859
Galveston	0	0	297,386	94,782
Gregg	0	0	3,152	1,130
Hardin	66,218	244	52,979	17,800
Harris	0	0	1,146,444	332,224
Harrison	0	0	50,625	18,141
Houston	0	0	550	196
Jasper	234,849	509	34,760	13,450
Jefferson	963,500	2,444	246,139	92,887
Liberty	0	0	76,801	23,248
Montgomery	0	0	54,747	12,214
Nacogdoches	0	0	59,526	20,789
Newton	72,075	181	14,284	5,582
Orange	921,304	1,464	84,762	31,640
Panola	1,855	9	23,158	8,823
Polk	0	0	46,488	15,119
Rusk	0	0	22,484	7,916
Sabine	46,899	149	10,438	4,485
San Augustine	12,738	52	8,708	3,575
San Jacinto	0	0	25,717	8,651
Shelby	18,033	83	26,602	9,592
Trinity	0	0	14,148	5,723
Tyler	21,692	84	20,955	7,777

## Critical Infrastructure

Summary			
Total Critical Facilities		1,591	
Power Requirements (kW)		58,794.7	
Range (kW)			
Communications	# FED Gen Req	Range (kW)	Req kW
AM Antennas (17)	0.9	35 - 75	46.8
Cellular Towers (106)	63.6	35 - 75	3,498.0
FM Antennas (49)	2.5	35 - 75	134.8
Education	# FED Gen Req	Range (kW)	Req kW
Private Schools (33)	0.0	200 - 300	0.0
Public Schools (310)	93.0	200 - 300	23,250.0
Colleges and Universities (25)	0.5	200 - 300	125.0
Emergency Services	# FED Gen Req	Range (kW)	Req kW
911 Call Centers (1)	0.1	15 - 35	2.5
Emergency Medical Service (129)	12.9	15 - 35	322.5
Fire Stations (176)	17.6	15 - 35	440.0
Service Providers (1)	0.0	0 - 0	0.0
Healthcare	# FED Gen Req	Range (kW)	Req kW
Nursing Homes (94)	14.1	35 - 100	951.8
Hospitals (40)	12.0	800 - 2000	16,800.0
Urgent Care Facilities (7)	1.4	200 - 300	350.0
Military	# FED Gen Req	Range (kW)	Req kW
Air National Guard (ANG) Sites (0)	0.0	15 - 35	0.0
Army National Guard (ARNG) Sites (6)	0.0	15 - 35	0.0
National Security Government Military Facilities (97)	0.0	15 - 35	0.0
Law Enforcement	# FED Gen Req	Range (kW)	Req kW
Prison Points (25)	5.0	400 - 600	2,500.0
Local Police (33)	3.3	15 - 35	82.5
State Police (3)	0.2	15 - 35	3.8
Correctional Facilities (0)	0.0	400 - 600	0.0
State and Local EOC	# FED Gen Req	Range (kW)	Req kW
Local Emergency Operations Centers (14)	2.8	15 - 40	77.0
State Emergency Operation Centers (EOCs) (0)	0.0	15 - 35	0.0



<b>State Facilities</b>	<b># FED Gen Req</b>	<b>Range (kW)</b>	<b>Req kW</b>
Governors Mansion (0)	0.0	100 - 200	0.0
Major State Government Building (4)	0.4	100 - 200	60.0

<b>Transportation</b>	<b># FED Gen Req</b>	<b>Range (kW)</b>	<b>Req kW</b>
Ports (287)	0.0	600 - 1200	0.0
Amtrak Stations (2)	0.0	100 - 300	0.0
Bus Stations (20)	0.0	100 - 300	0.0
Intermodal Terminal Facilities (19)	0.0	100 - 300	0.0
Railroad Stations (1)	0.0	100 - 300	0.0
Public-Use Airports (75)	9.0	40 - 100	630.0

<b>Water</b>	<b># FED Gen Req</b>	<b>Range (kW)</b>	<b>Req kW</b>
Water Treatment Facilities (0)	0.0	800 - 2000	0.0
Wastewater Treatment Plants (17)	6.8	800 - 2000	9,520.0

## COVID-19

#	County	Cases
1	Harris	99,290
2	Galveston	10,400
3	Lafayette	8,168
4	Montgomery	8,122
5	Calcasieu	7,284
6	Caddo	7,180
7	Pulaski	6,590
8	Jefferson	6,499
9	Rapides	3,703
10	Terrebonne	3,333
11	St. Landry	3,001
12	Acadia	2,748
13	Iberia	2,670
14	Bossier	2,557
15	Angelina	1,964
16	St. Martin	1,839
17	Vermilion	1,789
18	Gregg	1,769
19	Orange	1,736
20	St. Mary	1,726
21	Hot Spring	1,681
22	Pope	1,593
23	Faulkner	1,535
24	Allen	1,409
25	Saline	1,384
26	Liberty	1,376
27	Cherokee	1,339
28	Iberville	1,330
29	Garland	1,308
30	Nacogdoches	1,279
31	Avoyelles	1,218
32	Hardin	1,217
33	Sevier	1,121
34	Jefferson Davis	1,120
35	Yell	1,111
36	Chambers	1,103
37	Evangeline	1,006
38	Webster	988
39	Beauregard	941

40	Vernon	898
41	Natchitoches	894
42	Pointe Coupee	894
43	Lincoln	885
44	Bowie	860
45	De Soto	803
46	Union	788
47	Harrison	774
48	Polk	773
49	Sabine	712
50	Independence	692
51	Lonoke	652
52	Union	634
53	Miller	572
54	Winn	517
55	White	462
56	Rusk	446
57	Shelby	426
58	Jackson	421
59	Bienville	403
60	Howard	393
61	Jasper	393
62	Grant	382
63	LaSalle	379
64	Claiborne	331
65	Houston	327
66	Hempstead	307
67	Panola	302
68	Red River	300
69	Columbia	281
70	Little River	258
71	Lawrence	245
72	Cleburne	245
73	Cass	227
74	Clark	210
75	San Jacinto	193
76	Conway	189
77	San Augustine	185
78	Cameron	175
79	Tyler	175
80	Grant	169
81	Trinity	169
82	Newton	162
83	Pike	157

84	Nevada	156
85	Stone	155
86	Marion	139
87	Sharp	136
88	Ouachita	132
89	Cleveland	130
90	Dallas	90
91	Van Buren	84
92	Izard	81
93	Sabine	72
94	Lafayette	65
95	Montgomery	60
96	Perry	59
97	Calhoun	23

Report Generated by SimSuite  
[https://simsuite.usace.army.mil/wab/v2.15/MissionModels/index.html?\\_65=152](https://simsuite.usace.army.mil/wab/v2.15/MissionModels/index.html?_65=152)