



Hurricane Michael - Advisory #17

For Planning Purposes Only!

http://simsuite.usace.army.mil/wab/v2.9/index.html?config=config-mission-models.json&_25=54

Updated as of 10 Oct 2018 (6:31 PM Eastern Daylight Time)



Debris

2,185,140

cu. yd.

Georgia 54% (1,183,224)

Florida 28% (613,535)

Alabama 18% (388,381)



Temporary Roofing

7,029

units

Georgia 60% (4,221)

Alabama 20% (1,424)

Florida 20% (1,383)



Population

1,895,572

people

Georgia 56% (1,059,603)

Florida 35% (662,782)

Alabama 9% (173,188)



Households

654,915

households

Georgia 56% (365,995)

Florida 34% (224,220)

Alabama 10% (64,700)



Critical Infrastructure

Alabama

Florida

Georgia



(10) 15 - 35 kW



(15) 15 - 35 kW



(1) 15 - 40 kW



(2) 15 - 40 kW



(21) 35 - 75 kW



(17) 35 - 75 kW



(3) 35 - 100 kW



(7) 35 - 100 kW



(3) 40 - 100 kW



(1) 40 - 100 kW



(24) 200 - 300 kW



(21) 200 - 300 kW



(5) 400 - 600 kW



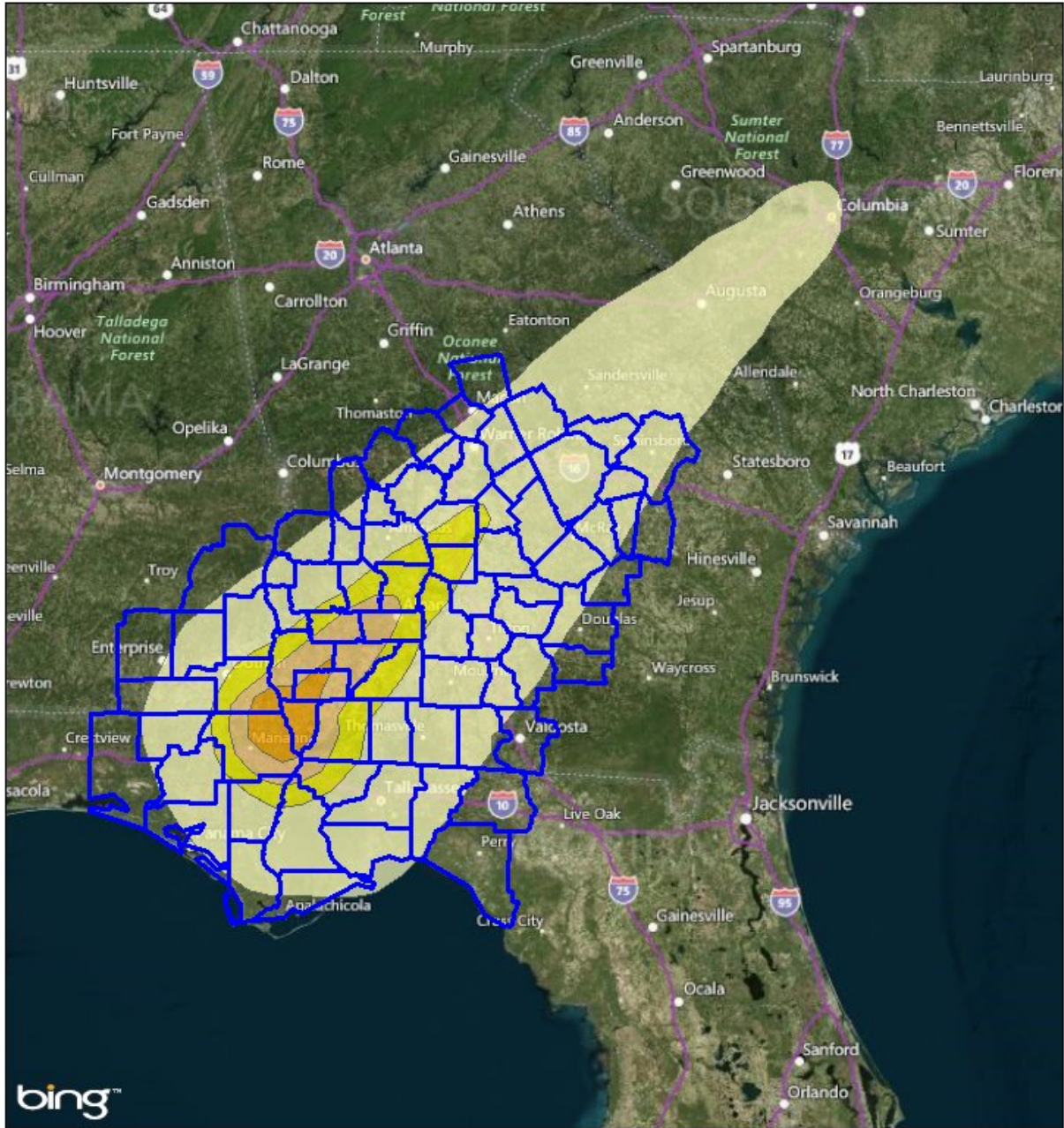
(3) 400 - 600 kW

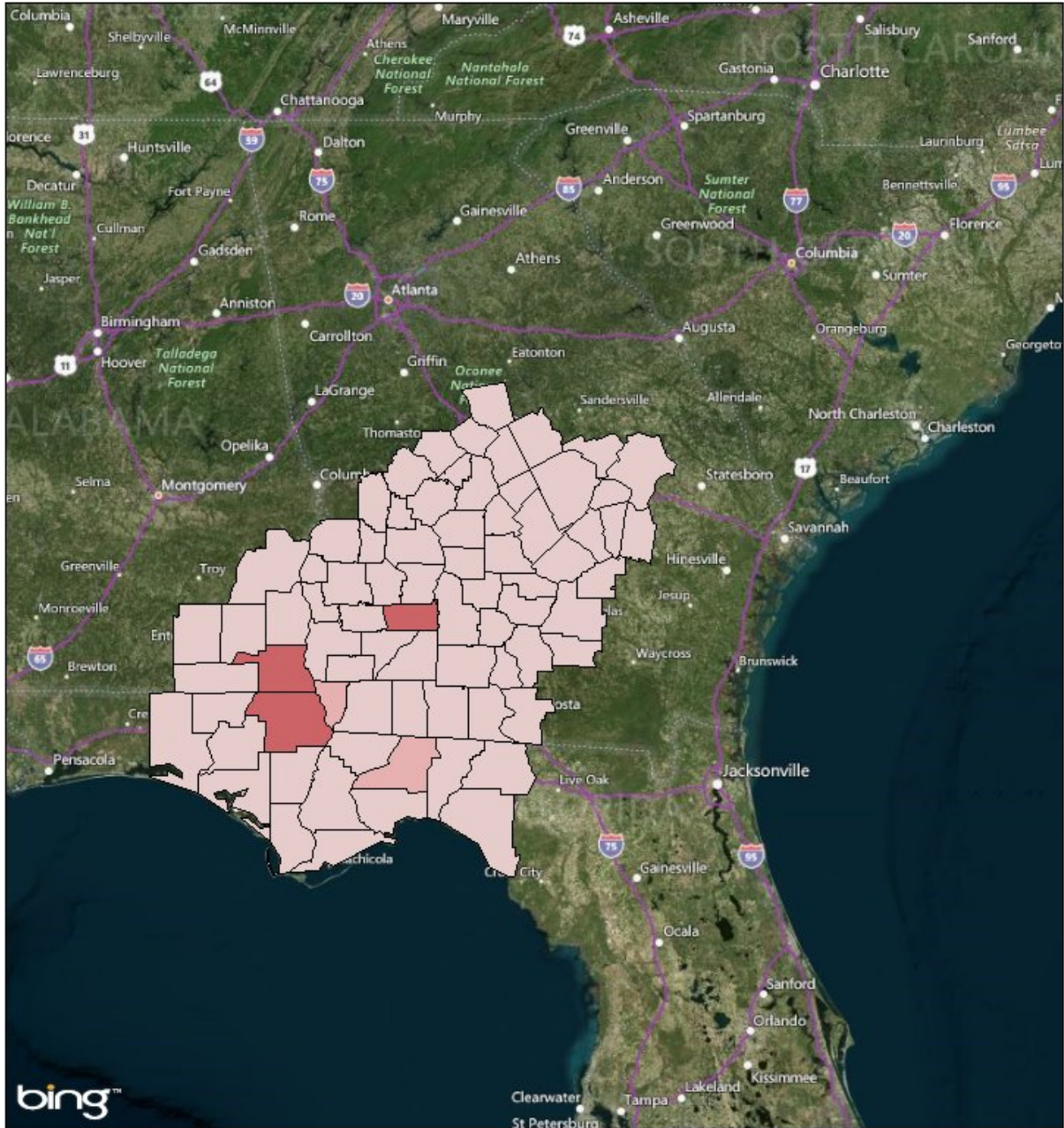


(3) 800 - 2000 kW



(3) 800 - 2000 kW

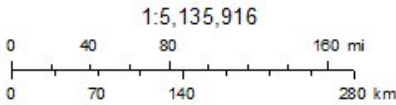




Mission Summaries

Debris

- < 100,000 cubic yards
- 100,000 - 249,000 cubic yards
- 250,000 - 499,999 cubic yards



© 2018 Microsoft Corporation Earthstar Geographics SIO © 2018 HERE

Mission Summary



The mission models account for storm surge and wind damage only, but do not account for other related storm hazards that may affect the mission estimates.

Summary	
Total Counties	77
Debris (cu. yd.)	2,185,140
Temporary Roofing (units)	7,029
Population	1,895,572.399
Households	654,914.734

Population Distribution	
Tropical Storm	308,506
Category 1	189,830
Category 2	123,649
Category 3	31,717

ALABAMA	Yards of Debris (388,381)	Roof Units (1,424)	Population (173,188)	Households (64,700)
Barbour	2,690	0	5,174	1,873
Coffee	2,321	0	4,488	1,616
Dale	27,117	0	48,162	18,878
Geneva	10,701	2	18,315	7,335
Henry	10,484	15	16,878	6,526
Houston	335,067	1,407	80,171	28,472

FLORIDA	Yards of Debris (613,535)	Roof Units (1,383)	Population (662,782)	Households (224,220)
Bay	85,609	0	170,196	59,597
Calhoun	11,758	50	14,045	4,463
Franklin	5,884	0	12,094	4,096
Gadsden	50,200	326	26,212	8,359
Gulf	7,083	0	16,351	4,931
Holmes	9,325	0	18,070	6,469
Jackson	269,109	985	49,381	15,993
Jefferson	6,744	0	14,782	4,695
Leon	138,649	0	273,560	96,521
Liberty	4,109	10	8,227	2,222
Madison	212	0	433	148
Taylor	16	0	34	11
Wakulla	12,138	0	33,302	8,450
Walton	818	0	1,995	570
Washington	11,881	11	24,099	7,695

GEORGIA	Yards of Debris (1,183,224)	Roof Units (4,221)	Population (1,059,603)	Households (365,995)
Atkinson	326	0	694	227
Baker	15,874	84	3,400	1,285
Ben Hill	9,585	0	17,625	6,673
Berrien	8,994	0	17,149	6,261
Bibb	41,470	0	75,385	28,869
Bleckley	6,280	0	12,856	4,372
Brooks	8,841	0	16,481	6,155
Calhoun	18,321	105	6,233	1,960
Clay	2,390	6	3,243	1,347
Coffee	8,248	0	17,519	5,742
Colquitt	22,258	0	45,526	15,495
Cook	8,449	0	16,702	5,882
Crawford	1,706	0	3,536	1,188
Crisp	28,957	233	22,247	8,337
Decatur	71,455	431	27,570	9,634
Dodge	10,144	0	19,864	7,062
Dooly	13,577	109	11,499	3,909
Dougherty	290,880	1,720	94,726	35,384
Early	56,407	262	11,387	4,595
Emanuel	11,556	0	22,914	8,045
Grady	13,758	15	25,275	8,796
Houston	58,767	0	139,553	40,911
Irwin	5,234	0	10,209	3,644
Jeff Davis	1,541	0	2,981	1,073
Johnson	4,496	0	9,495	3,130
Jones	1,760	0	3,974	1,225
Laurens	24,539	0	47,971	17,083
Lee	39,454	277	34,088	8,214
Lowndes	3,723	0	8,442	2,592
Macon	6,944	0	13,441	4,834
Marion	1,055	0	1,943	735
Miller	80,498	209	6,135	2,487
Mitchell	18,844	150	15,723	5,256
Montgomery	4,193	0	8,758	2,919
Peach	12,118	0	26,953	8,436
Pulaski	6,277	19	9,849	3,407
Quitman	1,504	0	2,682	1,047
Randolph	5,147	13	7,177	2,909
Schley	2,061	0	4,369	1,435
Seminole	115,649	300	9,329	3,573
Stewart	2,883	0	4,721	2,007
Sumter	24,630	101	32,477	12,026

Taylor	1,046	0	1,948	728
Telfair	5,947	0	13,353	4,140
Terrell	15,617	102	6,978	2,653
Thomas	23,427	0	45,653	16,309
Tift	19,994	0	42,577	13,919
Toombs	957	0	1,892	666
Treutlen	3,636	0	6,679	2,531
Turner	5,198	4	9,118	3,419
Twiggs	5,505	0	10,181	3,832
Webster	1,309	0	2,214	911
Wheeler	2,889	0	6,953	2,011
Wilcox	4,162	2	8,747	2,785
Wilkinson	5,497	0	10,064	3,827
Worth	17,243	77	21,146	8,101

Critical Infrastructure

Summary	
Total Structures	946
Power Requirements	34,546.2

Range (kW)	# Cat 1	# Cat 2	# Cat 3	# Cat 4
15 - 35	17.7	8.2	5.0	4.5
15 - 40	2.6	1.2	0.4	0.4
35 - 75	24.3	10.3	9.5	9.1
35 - 100	9.2	3.4	2.4	2.1
40 - 100	3.5	1.9	1.9	1.9
200 - 300	33.0	12.6	11.9	10.2
400 - 600	5.2	3.8	1.8	1.8
800 - 2000	4.0	1.5	1.4	2.4

Communications	# FED Gen Req	Range (kW)	Req kW
AM Antennas (15)	0.8	35 - 75	41.3
Cellular Towers (63)	37.8	35 - 75	2,079.0
FM Antennas (50)	2.5	35 - 75	137.5

Education	# FED Gen Req	Range (kW)	Req kW
Private Schools (24)	0.0	200 - 300	0.0
Public Schools (155)	46.5	200 - 300	11,625.0
Colleges and Universities (6)	0.1	200 - 300	30.0

Emergency Services	# FED Gen Req	Range (kW)	Req kW
911 Call Centers (0)	0.0	15 - 35	0.0
Emergency Medical Service (96)	9.6	15 - 35	240.0
Fire Stations (151)	15.1	15 - 35	377.5
Service Providers (0)	0.0	0 - 0	0.0

Healthcare	# FED Gen Req	Range (kW)	Req kW
Nursing Homes (77)	11.5	35 - 100	779.6
Hospitals (17)	5.1	800 - 2000	7,140.0
Urgent Care Facilities (6)	1.2	200 - 300	300.0

Military	# FED Gen Req	Range (kW)	Req kW
Air National Guard (ANG) Sites (0)	0.0	15 - 35	0.0
Army National Guard (ARNG) Sites (5)	0.0	15 - 35	0.0
National Security Government Military Facilities (50)	0.0	15 - 35	0.0

Law Enforcement	# FED Gen Req	Range (kW)	Req kW
Prison Points (44)	8.8	400 - 600	4,400.0
Local Police (40)	4.0	15 - 35	100.0
State Police (8)	0.4	15 - 35	10.0
Correctional Facilities (46)	9.2	400 - 600	4,600.0

State and Local EOC	# FED Gen Req	Range (kW)	Req kW
Local Emergency Operations Centers (17)	3.4	15 - 40	93.5
State Emergency Operation Centers (EOCs) (0)	0.0	15 - 35	0.0

State Facilities	# FED Gen Req	Range (kW)	Req kW
Governors Mansion (0)	0.0	100 - 200	0.0
Major State Government Building (0)	0.0	100 - 200	0.0

Transportation	# FED Gen Req	Range (kW)	Req kW
Ports (12)	0.0	600 - 1200	0.0
Amtrak Stations (0)	0.0	100 - 300	0.0
Bus Stations (11)	0.0	100 - 300	0.0
Intermodal Terminal Facilities (7)	0.0	100 - 300	0.0
Railroad Stations (0)	0.0	100 - 300	0.0
Public-Use Airports (42)	5.0	40 - 100	352.8

Water_Waster Water	# FED Gen Req	Range (kW)	Req kW
Water Treatment Facilities (0)	0.0	800 - 2000	0.0
Wastewater Treatment Plants (4)	1.6	800 - 2000	2,240.0

Report Generated by SimSuite

http://simsuite.usace.army.mil/wab/v2.9/index.html?config=config-mission-models.json&_25=54