



# Hurricane Michael Advisory 12

For Planning Purposes Only!

[http://simsuite.usace.army.mil/wab/v2.9/index.html?config=config-mission-models.json&\\_25=50](http://simsuite.usace.army.mil/wab/v2.9/index.html?config=config-mission-models.json&_25=50)

Updated as of 9 Oct 2018 (12:42 PM Eastern Daylight Time)



**Debris**

1,468,657  
cu. yd.

Florida 78% (1,152,304)

Georgia 18% (261,339)

Alabama 4% (55,014)



**Temporary Roofing**

11,155  
units

Florida 70% (7,801)

Georgia 27% (3,004)

Alabama 3% (349)



**Population**

1,292,083  
people

Florida 56% (717,416)

Georgia 33% (428,803)

Alabama 11% (145,864)



**Households**

444,289  
households

Florida 54% (240,415)

Georgia 34% (150,232)

Alabama 12% (53,642)



**Critical Infrastructure**

Florida

Georgia

(22) 15 - 35 kW

(3) 15 - 35 kW

(2) 15 - 40 kW

(1) 35 - 75 kW

(24) 35 - 75 kW

(1) 35 - 100 kW

(13) 35 - 100 kW

(3) 200 - 300 kW

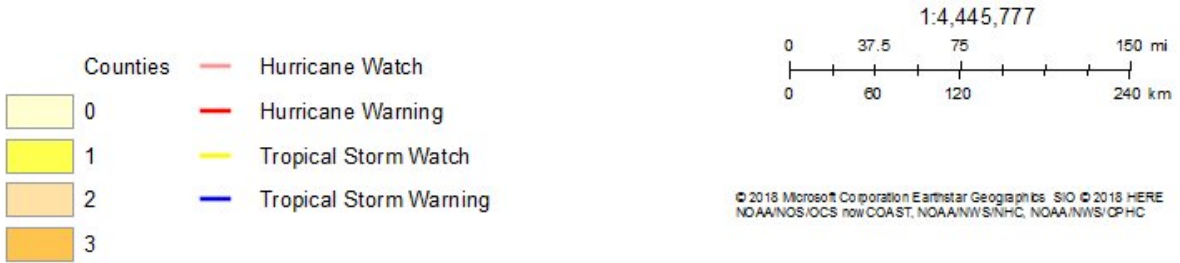
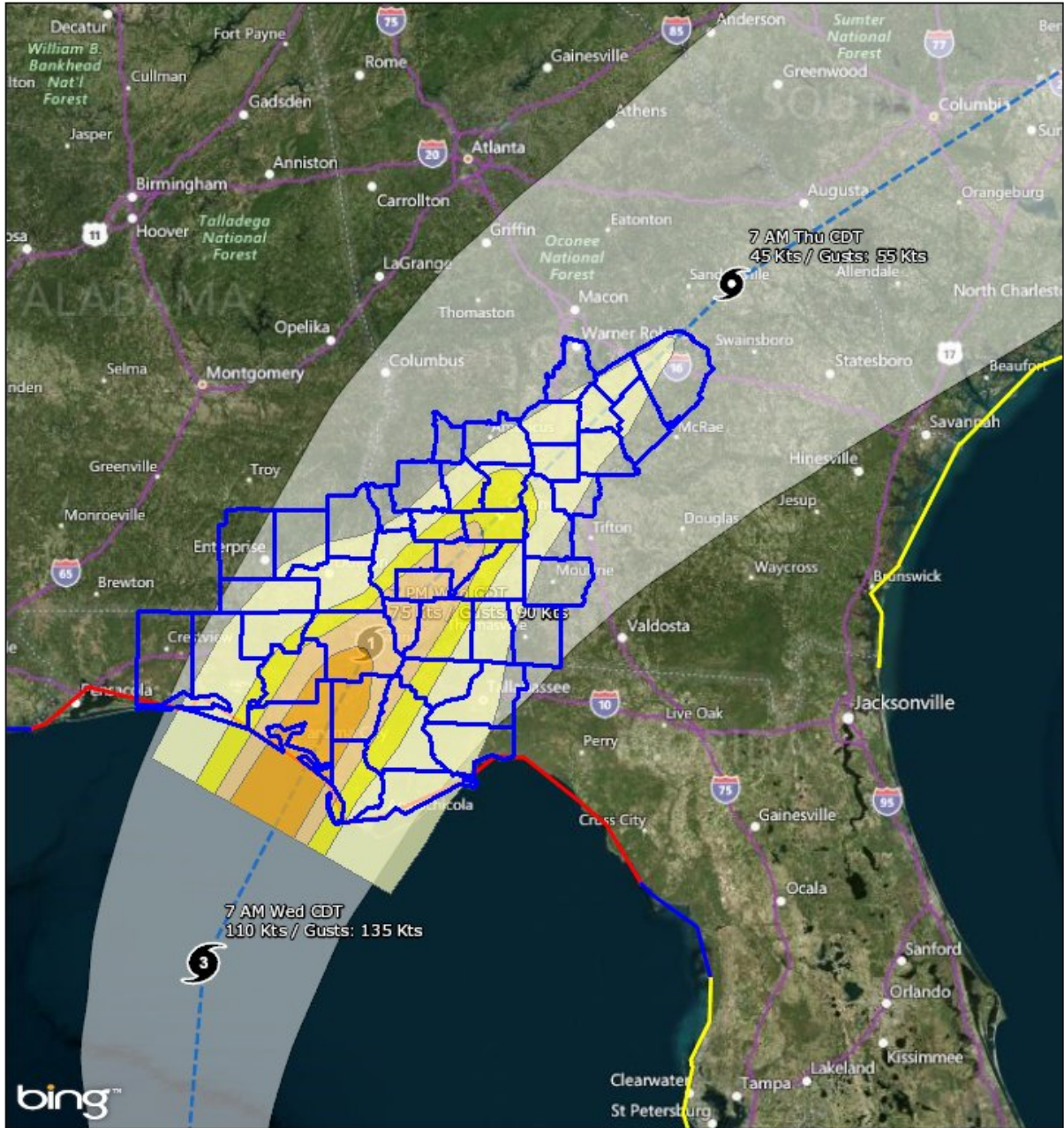
(7) 40 - 100 kW

(1) 400 - 600 kW

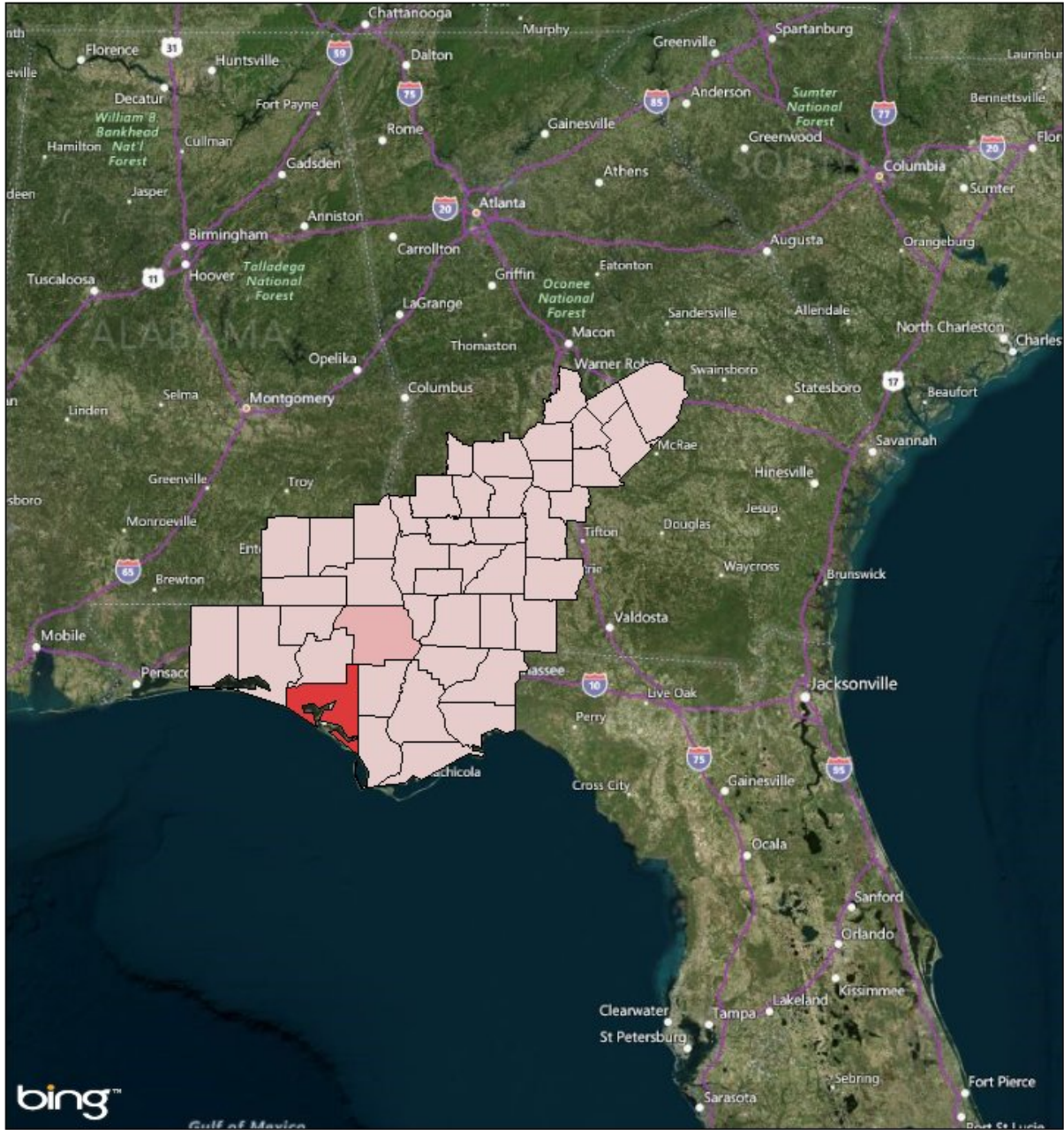
(52) 200 - 300 kW

(9) 400 - 600 kW

(7) 800 - 2000 kW



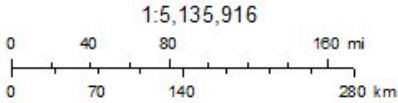




Mission Summaries

**Debris**

- < 100,000 cubic yards
- 100,000 - 249,000 cubic yards
- 500,000 - 999,999 cubic yards



© 2018 Microsoft Corporation Earthstar Geographics SIO © 2018 HERE

## Mission Summary



The mission models account for storm surge and wind damage only, but do not account for other related storm hazards that may affect the mission estimates.

Summary	
Total Counties	45
Debris (cu. yd.)	1,468,657
Temporary Roofing (units)	11,155
Population	1,292,083.415
Households	444,288.864

Population Distribution	
Tropical Storm	746,484
Category 1	226,797
Category 2	150,795
Category 3	149,071

ALABAMA	Yards of Debris (55,014)	Roof Units (349)	Population (145,864)	Households (53,642)
Coffee	78	0	300	108
Dale	3,680	0	13,070	5,123
Geneva	7,525	0	26,158	10,477
Henry	1,499	0	5,399	2,087
Houston	42,232	349	100,938	35,847

FLORIDA	Yards of Debris (1,152,304)	Roof Units (7,801)	Population (717,416)	Households (240,415)
Bay	772,802	5,092	170,189	59,595
Calhoun	56,084	390	14,061	4,468
Franklin	2,942	0	12,094	4,096
Gadsden	27,835	309	49,732	15,859
Gulf	21,022	217	16,350	4,931
Holmes	6,152	37	19,332	6,921
Jackson	130,262	1,190	51,305	16,617
Leon	69,324	0	273,560	96,521
Liberty	4,239	54	8,227	2,222
Okaloosa	501	0	2,019	697
Wakulla	6,069	0	33,302	8,450
Walton	10,365	52	42,403	12,106
Washington	44,707	461	24,841	7,932

<b>GEORGIA</b>	<b>Yards of Debris (261,339)</b>	<b>Roof Units (3,004)</b>	<b>Population (428,803)</b>	<b>Households (150,232)</b>
Baker	8,231	103	4,003	1,514
Bleckley	3,140	0	12,856	4,372
Calhoun	3,798	52	6,240	1,962
Clay	272	0	911	378
Colquitt	1,789	0	7,317	2,490
Crisp	5,988	0	22,247	8,337
Decatur	36,561	471	29,718	10,384
Dodge	1,930	0	7,559	2,687
Dooly	2,808	0	11,499	3,909
Dougherty	85,897	1,359	95,187	35,557
Early	9,509	117	11,622	4,689
Grady	6,219	10	23,650	8,231
Houston	3,863	0	18,347	5,379
Laurens	2,717	0	10,624	3,783
Lee	12,580	207	34,148	8,229
Miller	14,505	178	6,135	2,487
Mitchell	12,625	157	24,119	8,063
Pulaski	2,447	0	9,849	3,407
Randolph	610	0	2,093	848
Seminole	21,474	263	9,329	3,573
Sumter	8,637	0	32,475	12,025
Terrell	3,977	42	9,588	3,645
Thomas	1,285	0	5,006	1,788
Turner	2,467	0	9,161	3,435
Webster	0	0	0	0
Wilcox	2,000	0	8,747	2,785
Worth	6,012	47	16,373	6,273

## Critical Infrastructure

Summary	
Total Structures	1,130
Power Requirements	40,646.7

Range (kW)	# Cat 1	# Cat 2	# Cat 3
15 - 35	4.6	5.6	3.1
15 - 40	0.8	0.6	0.2
35 - 75	10.1	9.6	5.8
35 - 100	1.2	3.0	1.3
40 - 100	1.3	2.9	0.6
200 - 300	8.7	17.1	3.9
400 - 600	3.0	2.2	1.0
800 - 2000	0.6	2.0	1.8

Communications	# FED Gen Req	Range (kW)	Req kW
AM Antennas (15)	0.8	35 - 75	41.3
Cellular Towers (39)	23.4	35 - 75	1,287.0
FM Antennas (63)	3.2	35 - 75	173.3

Education	# FED Gen Req	Range (kW)	Req kW
Private Schools (27)	0.0	200 - 300	0.0
Public Schools (182)	54.6	200 - 300	13,650.0
Colleges and Universities (10)	0.2	200 - 300	50.0

Emergency Services	# FED Gen Req	Range (kW)	Req kW
911 Call Centers (0)	0.0	15 - 35	0.0
Emergency Medical Service (83)	8.3	15 - 35	207.5
Fire Stations (154)	15.4	15 - 35	385.0
Service Providers (0)	0.0	0 - 0	0.0

Healthcare	# FED Gen Req	Range (kW)	Req kW
Nursing Homes (99)	14.8	35 - 100	1,002.4
Hospitals (17)	5.1	800 - 2000	7,140.0
Urgent Care Facilities (5)	1.0	200 - 300	250.0

Military	# FED Gen Req	Range (kW)	Req kW
Air National Guard (ANG) Sites (1)	0.0	15 - 35	0.0
Army National Guard (ARNG) Sites (6)	0.0	15 - 35	0.0
National Security Government Military Facilities (129)	0.0	15 - 35	0.0

Law Enforcement	# FED Gen Req	Range (kW)	Req kW
Prison Points (52)	10.4	400 - 600	5,200.0
Local Police (35)	3.5	15 - 35	87.5
State Police (8)	0.4	15 - 35	10.0
Correctional Facilities (55)	11.0	400 - 600	5,500.0

State and Local EOC	# FED Gen Req	Range (kW)	Req kW
Local Emergency Operations Centers (17)	3.4	15 - 40	93.5
State Emergency Operation Centers (EOCs) (0)	0.0	15 - 35	0.0

State Facilities	# FED Gen Req	Range (kW)	Req kW
Governors Mansion (0)	0.0	100 - 200	0.0
Major State Government Building (0)	0.0	100 - 200	0.0

Transportation	# FED Gen Req	Range (kW)	Req kW
Ports (41)	0.0	600 - 1200	0.0
Amtrak Stations (1)	0.0	100 - 300	0.0
Bus Stations (12)	0.0	100 - 300	0.0
Intermodal Terminal Facilities (6)	0.0	100 - 300	0.0
Railroad Stations (1)	0.0	100 - 300	0.0
Public-Use Airports (63)	7.6	40 - 100	529.2

Water_Waster Water	# FED Gen Req	Range (kW)	Req kW
Water Treatment Facilities (0)	0.0	800 - 2000	0.0
Wastewater Treatment Plants (9)	3.6	800 - 2000	5,040.0

Report Generated by SimSuite

[http://simsuite.usace.army.mil/wab/v2.9/index.html?config=config-mission-models.json&\\_25=50](http://simsuite.usace.army.mil/wab/v2.9/index.html?config=config-mission-models.json&_25=50)