








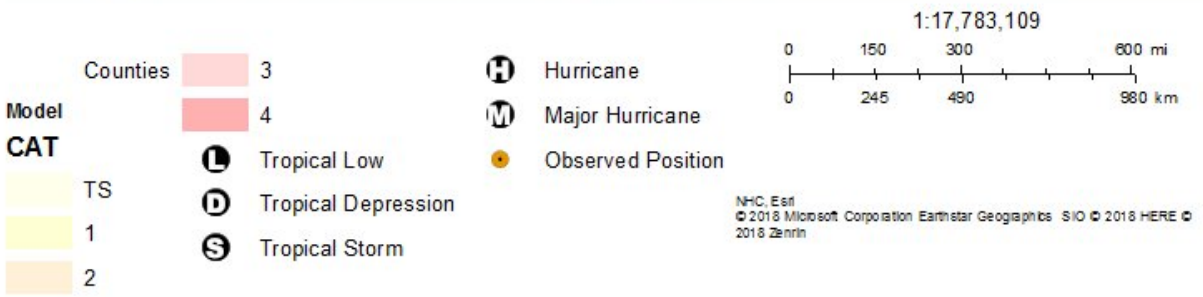
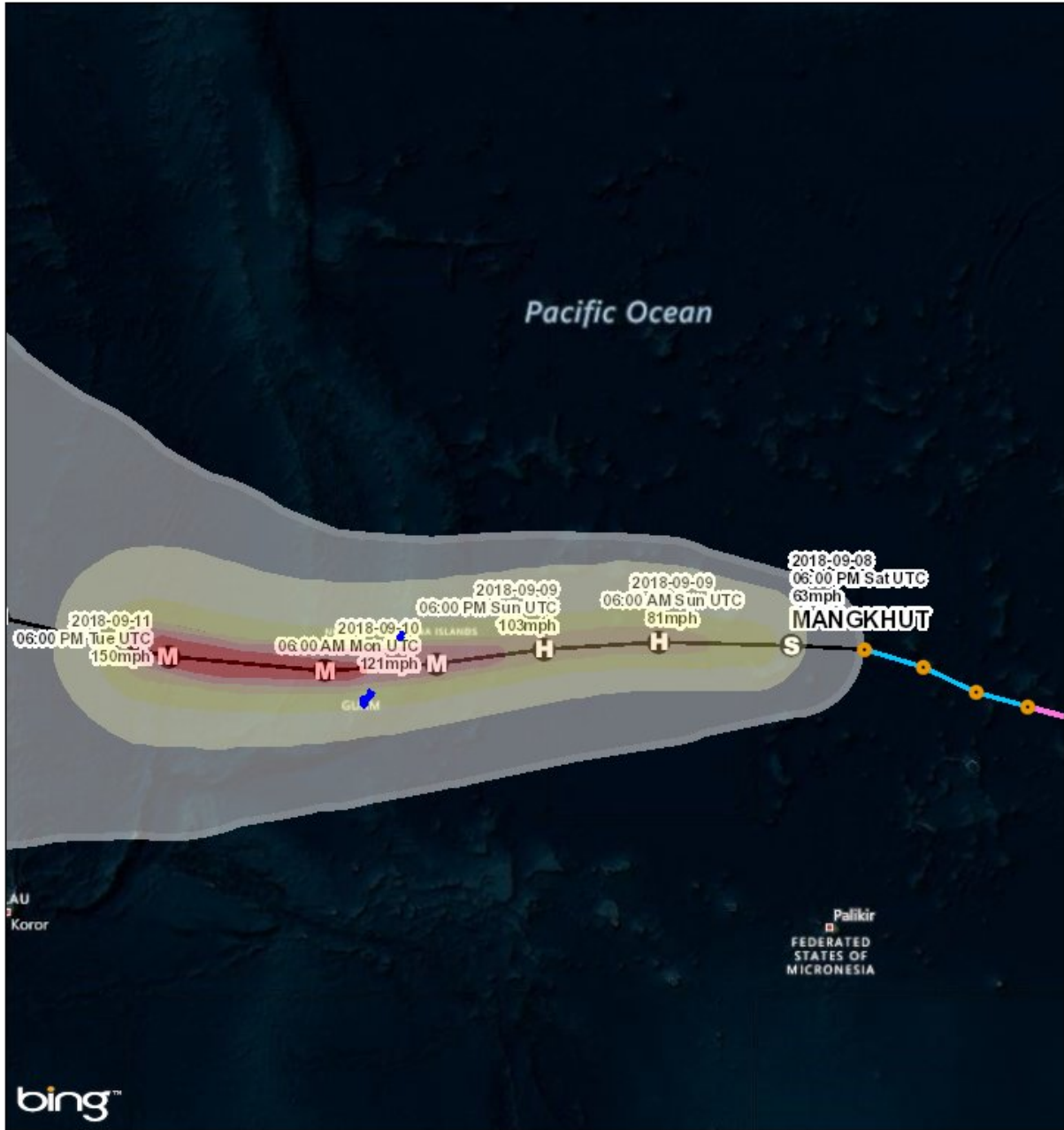
# TS Mangkhut - Advisory 8

For Planning Purposes Only!

<http://simsuite.usace.army.mil/agol/apps/missionmodels/index.html>

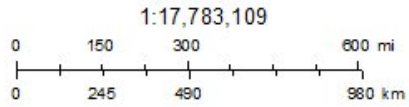
Updated as of 8 Sep 2018 (6:21 PM Eastern Daylight Time)

 <b>Debris</b>	106,380 cu. yd.	GUAM 71% (75,024) COMMONWEALTH OF NORTHERN MA
 <b>Temporary Roofing</b>	2,450 units	GUAM 71% (1,728) COMMONWEALTH OF NORTHERN MA
 <b>Population</b>	227,896 people	GUAM 71% (162,896) COMMONWEALTH OF NORTHERN MA
 <b>Households</b>	61,255 households	GUAM 71% (43,200) COMMONWEALTH OF NORTHERN MA
 <b>Critical Infrastructure</b>		





bing™



© 2018 Microsoft Corporation. Earthstar Geographics S/O © 2018 HERE © 2018 Zenrin

## Mission Summary



The mission models account for storm surge and wind damage only, but do not account for other related storm hazards that may affect the mission estimates.

Total Counties	2
Debris (cu. yd.)	106,380
Temporary Roofing (units)	2,450
Population	227,896
Households	61,255

<b>COMMONWEALTH OF NORTHERN MARIANA ISLANDS</b>	<b>Yards of Debris (31,356)</b>	<b>Roof Units (722)</b>	<b>Population (65,000)</b>	<b>Households (18,055)</b>
SIAPAN	31,356	722	65,000	18,055

<b>GUAM</b>	<b>Yards of Debris (75,024)</b>	<b>Roof Units (1,728)</b>	<b>Population (162,896)</b>	<b>Households (43,200)</b>
GUAM	75,024	1,728	162,896	43,200

## Critical Infrastructure

Total: **218 Structures**

Power Requirements: **9,861.3 kW**

<b>Communications</b>	<b># FED Gen Req</b>	<b>Range (kW)</b>	<b>Req kW</b>
AM Antennas (0)	0.0	35 - 75	0.0
Cellular Towers (22)	13.2	35 - 75	726.0
FM Antennas (0)	0.0	35 - 75	0.0
<b>Education</b>	<b># FED Gen Req</b>	<b>Range (kW)</b>	<b>Req kW</b>
Private Schools (0)	0.0	200 - 300	0.0
Public Schools (71)	21.3	200 - 300	5,325.0
Colleges and Universities (4)	0.1	200 - 300	20.0
<b>Emergency Services</b>	<b># FED Gen Req</b>	<b>Range (kW)</b>	<b>Req kW</b>
911 Call Centers (0)	0.0	15 - 35	0.0
Emergency Medical Service (32)	3.2	15 - 35	80.0
Fire Stations (33)	3.3	15 - 35	82.5
Service Providers (0)	0.0	0 - 0	0.0
<b>Healthcare</b>	<b># FED Gen Req</b>	<b>Range (kW)</b>	<b>Req kW</b>
Nursing Homes (1)	0.1	35 - 100	10.1
Hospitals (5)	1.5	800 - 2000	2,100.0
Urgent Care Facilities (0)	0.0	200 - 300	0.0
<b>Military</b>	<b># FED Gen Req</b>	<b>Range (kW)</b>	<b>Req kW</b>
Air National Guard (ANG) Sites (1)	0.0	15 - 35	0.0
Army National Guard (ARNG) Sites (2)	0.0	15 - 35	0.0
National Security Government Military Facilities (0)	0.0	15 - 35	0.0
<b>Law Enforcement</b>	<b># FED Gen Req</b>	<b>Range (kW)</b>	<b>Req kW</b>
Prison Points (3)	0.6	400 - 600	300.0
Local Police (0)	0.0	15 - 35	0.0
State Police (2)	0.1	15 - 35	2.5
Correctional Facilities (2)	0.4	400 - 600	200.0
<b>State and Local EOC</b>	<b># FED Gen Req</b>	<b>Range (kW)</b>	<b>Req kW</b>
Local Emergency Operations Centers (2)	0.4	15 - 40	11.0
State Emergency Operation Centers (EOCs) (1)	0.2	15 - 35	5.0

State Facilities	# FED Gen Req	Range (kW)	Req kW
Governors Mansion (1)	0.0	100 - 200	0.0
Major State Government Building (22)	2.2	100 - 200	330.0

Transportation	# FED Gen Req	Range (kW)	Req kW
Ports (0)	0.0	600 - 1200	0.0
Amtrak Stations (0)	0.0	100 - 300	0.0
Bus Stations (0)	0.0	100 - 300	0.0
Intermodal Terminal Facilities (0)	0.0	100 - 300	0.0
Railroad Stations (0)	0.0	100 - 300	0.0
Public-Use Airports (13)	1.6	40 - 100	109.2

Water_Waster Water	# FED Gen Req	Range (kW)	Req kW
Water Treatment Facilities (1)	0.4	800 - 2000	560.0
Wastewater Treatment Plants (0)	0.0	800 - 2000	0.0

Report Generated by SimSuite  
<http://simsuite.usace.army.mil/agol/apps/missionmodels/index.html>