

AWARDED ACF CONTRACTS

34 CONTRACTS

TABLE OF CONTENTS

2 – TCF CENTER

3 – MISSOURI ACF

4 – ALASKA AIRLINES

5 – WISCONSIN STATE
FAIR EXPO CENTER

6 – GIBSON MEDICAL
CENTER

7 – MIYAMURA HIGH
SCHOOL

8 – MIAMI BEACH
CONVENTION CENTER

9 – SUBURBAN COLLECTION
SHOWPLACE

10 – PORTERVILLE
DEVELOPMENT CENTER

11 – WESTCHESTER COUNTY
CENTER

12 – UNITED MEDICAL
CENTER

13 – NEW BRIDGE-BERGEN

14 – METRO SOUTH MEDICAL
CENTER

15 – SHERMAN HOSPITAL

16 – MCCORMICK PLACE

17 – HAGERSTOWN CORR.
FACILITY

18 – WESTLAKE HOSPITAL

19 – SUNY STONY BROOK

20 – COLORADO
CONVENTION CENTER

21 – JAVITS CENTER

22 – SUNY OLD WESTBURY

23 – ST. FRANCIS HOSPITAL

24 – ATSA BIYAAZH SCHOOL

25 – NEW BRIDGE BERGEN
PARKING LOT

26 – CHINLE COMMUNITY CENTER

27 – THE RANCH EVENTS
COMPLEX

28 – ST. LUKE'S MEDICAL
CENTER

29 – EAST ORANGE
GENERAL HOSPITAL

30 – 210 ARNG REGIONAL
TRAINING INSTITUTE

31 – WALTER E. WASHINGTON
CONVENTION CENTER

32 – INTEGRIS BAPTIST PORT.
CAMPUS

33 – OSU MEDICAL CENTER

34 – EUGENE RIVER
AVENUE FACILITY

35 – COMMERCIAL
APPEAL BUILDING

TCF CENTER – DETROIT, MI

ARENA TO HEALTHCARE (A2HC)

Alternate Care Facility Overview

Location: Detroit, MI
MSC: Great Lakes & Ohio River Div. (LRD)
FEMA Region: V
Contractor: Detroit Reg. Conv./COBO Hall
Type: Arena (A2HC)
Patient Type: COVID
Facility Size: 725,000 SF
Bed Capacity: 970
Address: 1 Washington Blvd., Detroit, MI 48226



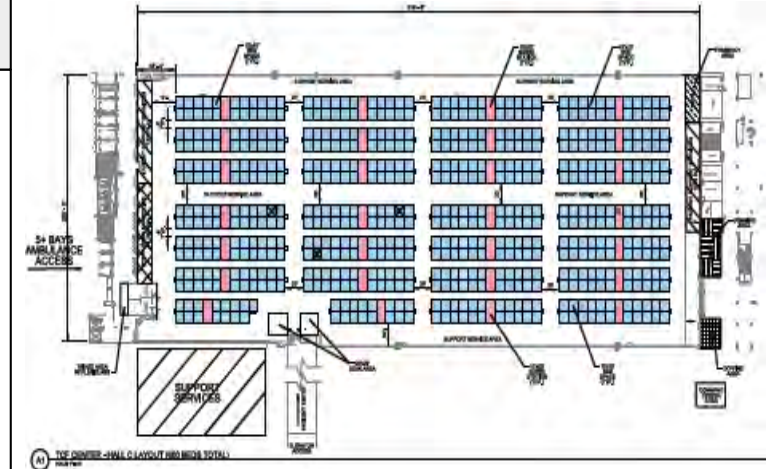
Plans

Plans Key:
Blue = Patient rooms / beds
Pink/Purple: Nurse stations

Notes:

- *2 Halls:
 - Hall C (depicted on the right): 600 beds with negative pressure for the entire hall
 - Hall E: 370 beds with negative pressure (no O2) for the entire hall

*Facility is equipped with oxygen lines and negative pressure.



Timeline

Assessment MA received	25 MAR 20
Construction MA received	30 MAR 20
Contract Awarded	31 MAR 20
Construction Start	31 MAR 20
Contractual Completion	09 APR 20
Estimated Completion	09 APR 20
Actual Completion	09 APR 20
Total Construction Duration	10 Days
Notes: 100% Complete; First patients arrived on 11 APR 20.	

Projected Bed Shortfall 31 May – Jun 07



In Progress Photos





US Army Corps
of Engineers.

MISSOURI ACF AT FLORISSANT– FLORISSANT, MO

HOTEL TO HEALTHCARE (H2HC)



Alternate Care Facility Overview

Location: Florissant, MO
MSC: Northwest Division (NWD)
FEMA Region: VII
Contractor: Tarlton
Type: Hotel (H2HC)
Patient Type: COVID
Facility Size: 45,000 SF
Bed Capacity: 118
Address: 55 Dunn Rd., Florissant, MO 63031



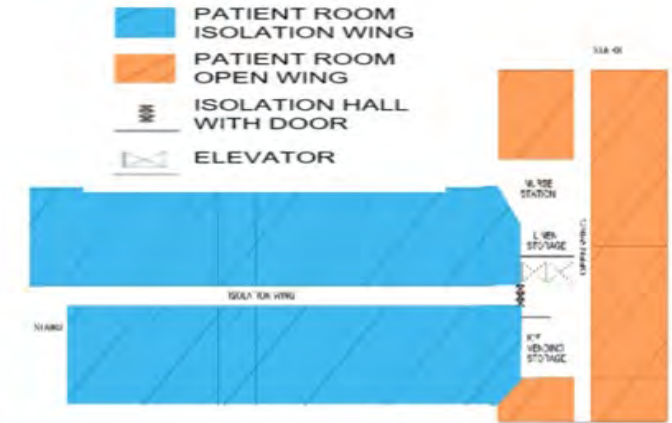
Plans

Plans Key:

Layout of 3rd Floor
Total of 4 floors with similar layout.

Notes:

- 118 Patient Units
- 4 Nurse Stations
- 12 Support Areas



Timeline

Assessment MA received	06 APR 20
Construction MA received	06 APR 20
Contract Awarded	08 APR 20
Construction Start	08 APR 20
Contractual Completion	12 APR 20
Estimated Completion	11 APR 20
Actual Completion	11 APR 20
Total Construction Duration	4 Days
<u>Notes:</u> 100% Complete; First patient admitted 15 APR.	

Projected Bed Shortfall 31 May – Jun 07



In Progress Photos



COVID Convalescent Patient Room



MG Toy Meets with Contractors

ALASKA AIRLINES CENTER – ANCHORAGE, AK

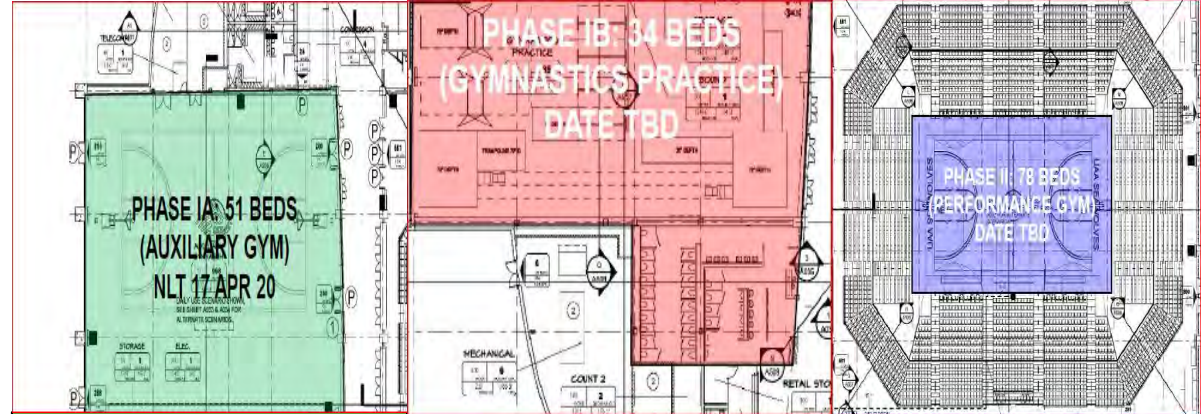
ARENA TO HEALTHCARE (A2HC)

Alternate Care Facility Overview

Location: Anchorage, AK
MSC: Pacific Ocean Division (POD)
FEMA Region: X
Contractor: Nesser-Paug/Vick
Type: Arena (A2HC)
Patient Type: COVID
Facility Size: 196k SF
Bed Capacity: 51 (PH. 1A)
Address: 3550 Providence Drive, Anchorage, AK 99501



Plans



Phase 1A: 51 Beds (aux gym) + Staff Clean Area
57 CTR; 6 USACE Employees

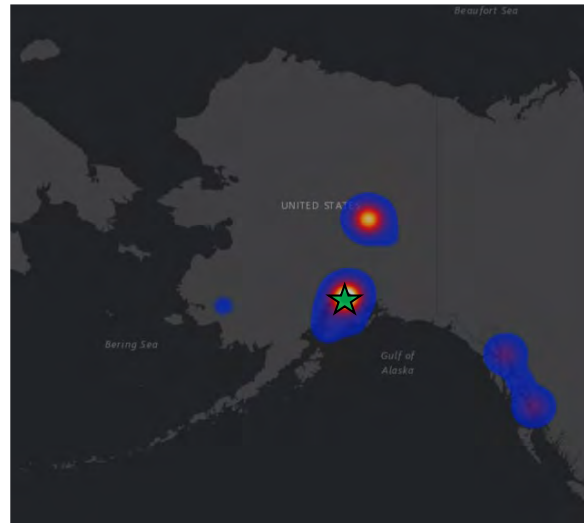
Phase 1B: 34 Beds
(Gymnastic Practice area)

Phase 2: 78 Beds
erected in Performance Gym Area

Timeline

Assessment MA received	27 MAR 20
Construction MA received	07 APR 20
Contract Awarded	09 APR 20 (PH. 1A)
Construction Start	09 APR 20 (PH. 1A)
Contractual Completion	17 APR 20 (PH.1A)
Estimated Completion	17 APR 20 (PH.1A)
Actual Completion	17 APR 20 (PH.1A)
Total Construction Duration	9 Days
<u>Notes:</u> 100% Complete	

Heat Map COVID-19



In Progress Photos





US Army Corps
of Engineers.

WISCONSIN STATE FAIR EXPO CENTER – WEST ALLIS, WI

ARENA TO HEALTHCARE (A2HC)



Alternate Care Facility Overview

Location: Wisconsin State Fair Expo Center
MSC: Mississippi Valley Division (MVD) Executing: Great Lakes & River Division (LRD)
FEMA Region: V
Contractor: Gilbane Building Company
Type: Arena (A2HC)
Patient Type: COVID
Facility Size: 199k SF
Bed Capacity: 530
Address: 640 S. 84 th St., West Allis, WI



Plans

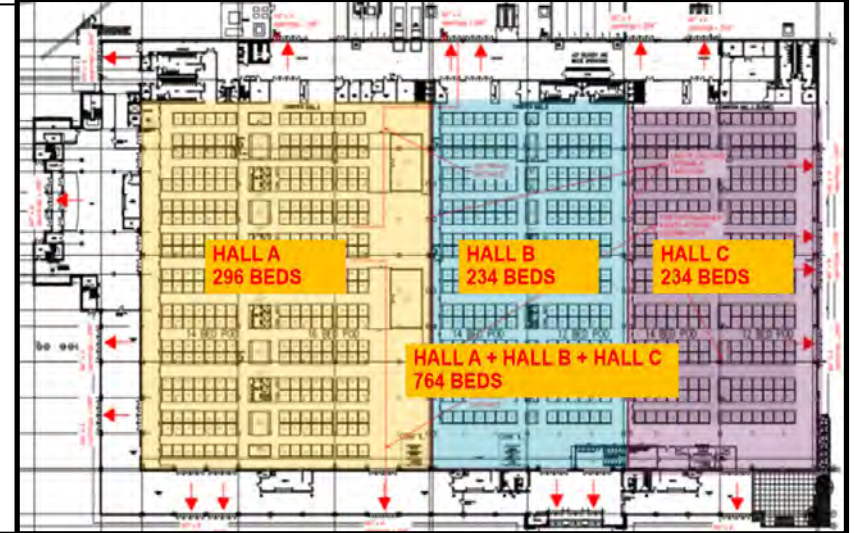
Notes:

Floor Plan Layout of ACF at WI State Fairgrounds Exposition Hall.

Hall C is shown for Design only so it is not factored into the overall bed capacity.

296 beds with inline oxygen.

234 beds with bottled oxygen.



Timeline

Assessment MA received	29 MAR 20
Construction MA received	07 APR 20
Contract Awarded	07 APR 20
Construction Start	08 APR 20
Contractual Completion	18 APR 20
Estimated Completion	18 APR 20
Actual Completion	17 APR 20
Total Construction Duration	10 Days

Projected Bed Shortfall 31 May – Jun 07



In Progress Photos



Notes: 100% Complete; The official opening of the ACF is scheduled for 01 MAY 20.

Alternate Care Facility Overview

Location: Albuquerque, NM
MSC: South Pacific Division (SPD)
FEMA Region: VI
Contractor: Weil Construction, Inc.
Type: Hotel (H2HC)
Patient Type: COVID
Facility Size: 160,000 SF
Bed Capacity: 200
Address: 5400 Gibson Blvd. SE, Albuquerque, NM 87109



Plans

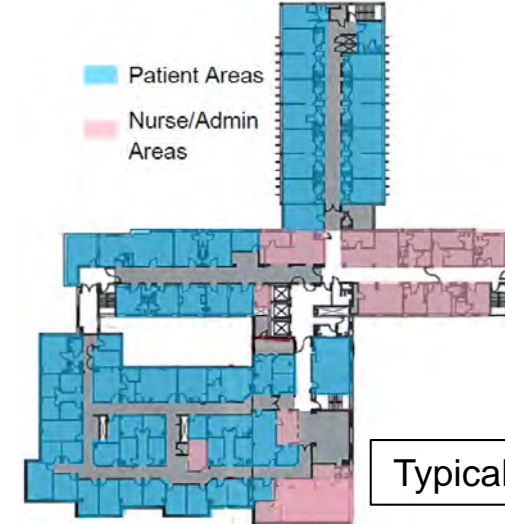
Notes:

20 acute COVID Beds
180 non-acute COVID Beds

Converted and restored unoccupied sections of five floors of an Inactive Hospital

Installed HVAC systems to achieve negative pressure on all floors

Oxygen lines will run to patient rooms on two floors



Typical Floor Plan

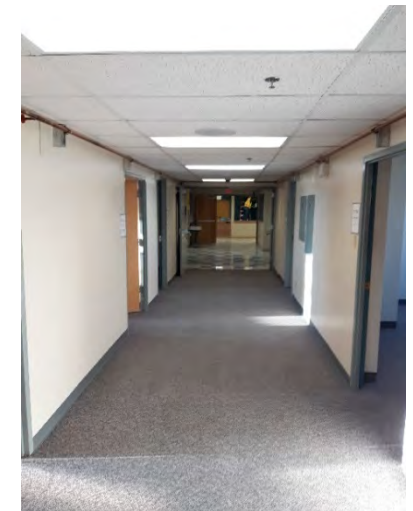
Timeline

Assessment MA received	17 MAR 20
Construction MA received	01 APR 20
Contract Awarded	03 APR 20
Construction Start	04 APR 20
Contractual Completion	18 APR 20
Estimated Completion	18 APR 20
Actual Completion	18 APR 20
Total Construction Duration	15 Days

Projected Bed Shortfall 31 May – Jun 07



In Progress Photos



MIYAMURA HIGH SCHOOL – GALLUP, NM

ARENA TO HEALTHCARE (A2HC)

Alternate Care Facility Overview

Location: Gallup, NM
MSC: South Pacific Division (SPD)
FEMA Region: VI
Contractor: Four Winds Joint Venture
Type: Arena (A2HC)
Patient Type: COVID
Facility Size: 12,000 SF
Bed Capacity: 60
Address: 680 Boardman Ave., Gallup, NM 87301



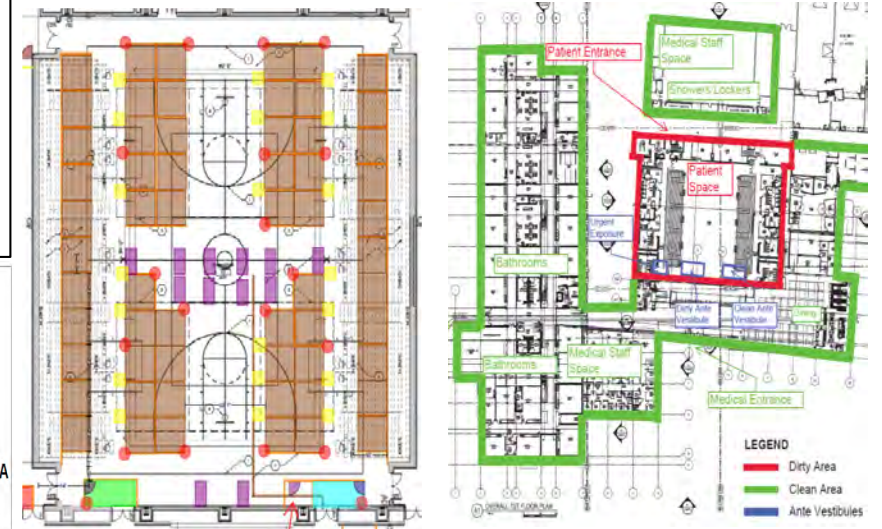
Plans

Notes:

Gym negatively pressurized to safely house patients

Oxygen lines installed to each patient pod

- 2 - Clean Vestibule 14'x6' - 1 EA
- 3 - Dirty Vestibule 14'x6' - 1 EA
- 6 - Nurse Station - 12 EA
- 7 - 6' Walkway - 276 LF
- 8 - Temporary Walls - 1,056 LF
- 9 - 5' Walkway - 105 LF
- 12 - 9' Walkway - 189 LF
- 13 - Decontamination Vestibule - 99 SF
- 14 - Handwash Sink 3' into aisle way max - 20 EA
- 15 - Vestibule Door - 5 EA
- 21 - Patient Room 8'x8' - 60 EA



Timeline

Assessment MA received	17 MAR 20
Construction MA received	04 APR 20
Contract Awarded	05 APR 20
Construction Start	06 APR 20
Contractual Completion	20 APR 20
Estimated Completion	19 APR 20
Actual Completion	19 APR 20
Total Construction Duration	14 Days

Projected Bed Shortfall 31 May – Jun 07



In Progress Photos





MIAMI BEACH CONVENTION CENTER – MIAMI BEACH, FL

ARENA TO HEALTHCARE (A2HC)



US Army Corps
of Engineers.

Alternate Care Facility Overview

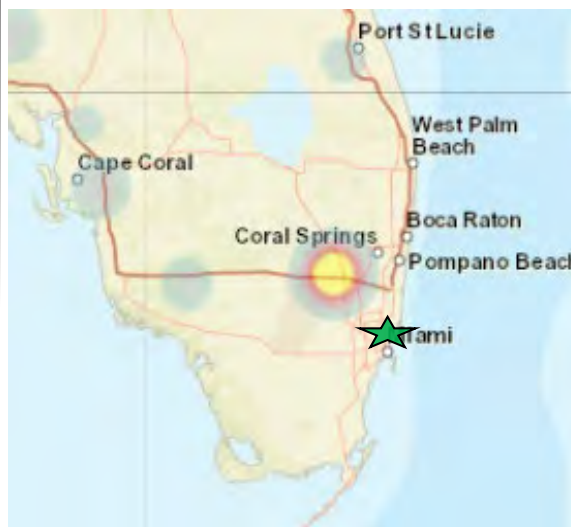
Location: Miami Beach, FL
MSC: South Atlantic Division (SAD)
FEMA Region: IV
Contractor: The Robins & Morton Group
Type: Arena (A2HC)
Patient Type: COVID
Facility Size: 1.4 M SF (overall)
Bed Capacity: 450
Address: 1901 Convention Center Drive, Miami Beach, FL 33139



Timeline

Assessment MA received	17 MAR 20
Construction MA received	04 APR 20
Contract Awarded	06 APR 20
Construction Start	08 APR 20
Contractual Completion	20 APR 20
Estimated Completion	20 APR 20
Actual Completion	19 APR 20
Total Construction Duration	12 Days
Notes: 100% Complete; Completed 5 days early.	

Projected Bed Shortfall 31 May – Jun 07



Plans

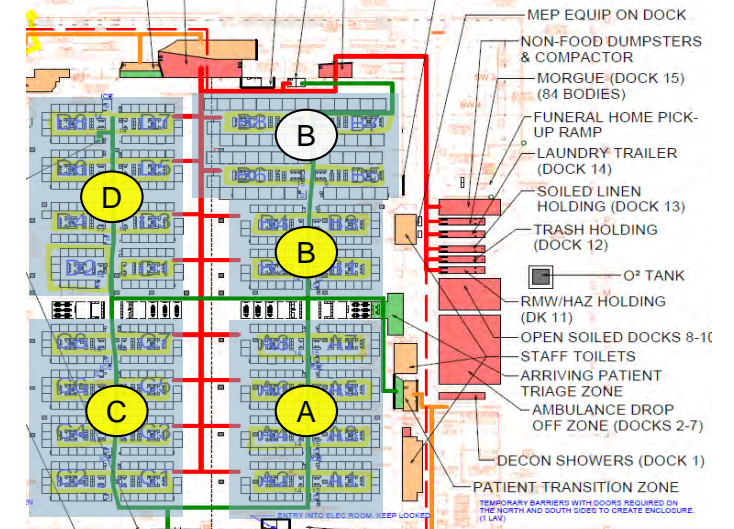
Notes:

Zones A, C, D, and half of B total 400 COVID-19 acute care pods

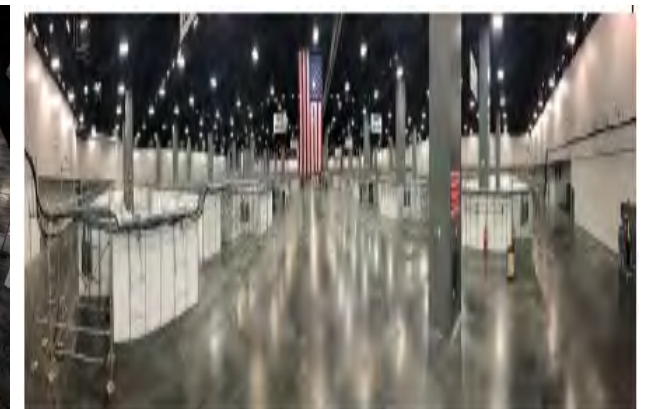
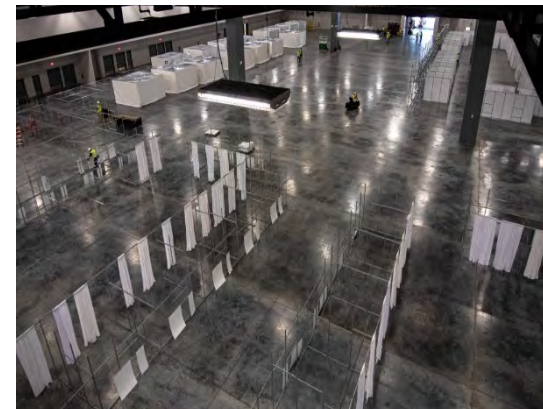
Top half of Zone B totals 50 COVID-19 ICU level isolation pods

Key:

- Acute Care
- ICU Care



In Progress Photos



Complete Facility



US Army Corps
of Engineers.

SUBURBAN COLLECTION SHOWPLACE – NOVI, MI

ARENA TO HEALTHCARE (A2HC)



Alternate Care Facility Overview

Location: Novi, MI
MSC: Great Lakes and Rivers Division (LRD)
FEMA Region: V
Contractor: Gilbane Federal
Type: Arena (A2HC)
Patient Type: COVID
Facility Size: 250k SF
Bed Capacity: 250
Address: 46100 Grand River Ave., Novi, MI 48374



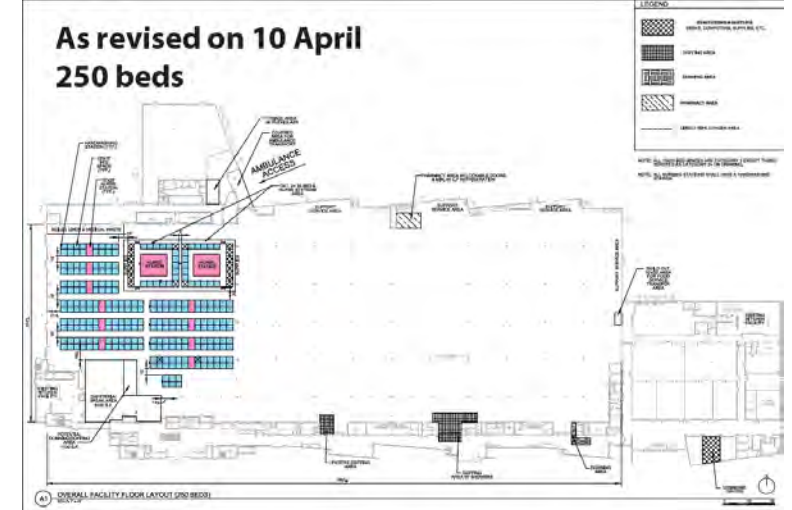
Plans

Plans Key:
Blue = Patient rooms / beds
Pink/Purple: Nurse stations

Notes:
250 patient units including plumbed oxygen.

12 Nurse Stations

900 SF Built-In Pharmacy
*Facility is equipped with oxygen lines and negative pressure.



Timeline

Assessment MA received	30 MAR 20
Construction MA received	05 APR 20
Contract Awarded	05 APR 20
Construction Start	06 APR 20
Contractual Completion	20 APR 20
Estimated Completion	20 APR 20
Actual Completion	20 APR 20
Total Construction Duration	15 Days

Projected Bed Shortfall 31 May – Jun 07



In Progress Photos



National Guard Leadership Tour



Completed Facility Signage

Notes: 100% Complete; Date Patients Arrived: 24 APR 20.



PORTERVILLE DEVELOPMENT CENTER – PORTERVILLE, CA

HOTEL TO HEALTHCARE (H2HC)



US Army Corps
of Engineers.

Alternate Care Facility Overview

Location: Porterville, CA
MSC: South Pacific Division (SPD)
FEMA Region: Region IX
Contractor: Herman Construction Group, Inc.
Type: Hotel (H2HC)
Patient Type: COVID
Facility Size: Varies
Bed Capacity: 246
Address: 26501 Ave. 140, Porterville, CA 93257



Plans

Notes:
6 buildings with an average of 41 beds per building



Timeline

Assessment MA received	24 MAR 20
Construction MA received	02 APR 20
Contract Awarded	05 APR 20
Construction Start	08 APR 20
Contractual Completion	21 APR 20
Estimated Completion	21 APR 20
Actual Completion	21 APR 20
Total Construction Duration	14 Days
Notes: 100% Complete; Date Patients Arrive: TBD	

Projected Bed Shortfall 31 May – Jun 07



In Progress Photos





US Army Corps
of Engineers.

WESTCHESTER COUNTY CENTER – WHITE PLAINS, NY

ARENA TO HEALTHCARE (A2HC)



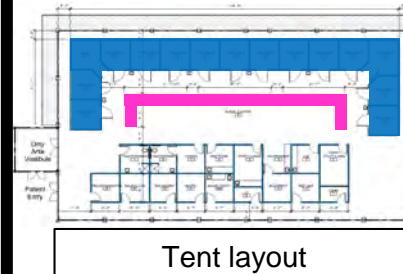
Alternate Care Facility Overview

Location: White Plains, NY
MSC: North Atlantic Division (NAD)
FEMA Region: II
Contractor: Haugland Energy Group, LLC.
Type: Arena (A2HC)
Patient Type: COVID
Facility Size: 60,000 SF
Bed Capacity: 110
Address: 198 Central Avenue, White Plains, NY 10606



Plans

Notes: Site plan - upper location interior with 54 beds - lower location new temporary tents with 56 beds.
Floor plans: blue – patient rooms; pink - nurse stations



Timeline

Assessment MA received	18 MAR 20
Construction MA received	23 MAR 20
Contract Awarded	27 MAR 20
Construction Start	27 MAR 20
Contractual Completion	22 APR 20
Estimated Completion	22 APR 20
Actual Completion	22 APR 20
Total Construction Duration	27 Days

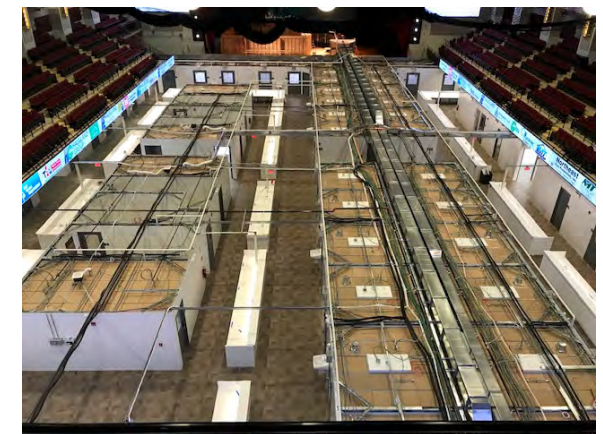
Projected Bed Shortfall 31 May – Jun 07



In Progress Photos



Tent Build Out



Interior Build Out

Alternate Care Facility Overview

Location: Washington, D.C.
MSC: North Atlantic Division (NAD)
FEMA Region: III
Contractor: Patriot
Type: Arena (A2HC)
Patient Type: COVID
Facility Size: 140,000 SF
Bed Capacity: 6 CMS units
Address: 1310 Southern Ave SE, Washington, DC 20032



Timeline

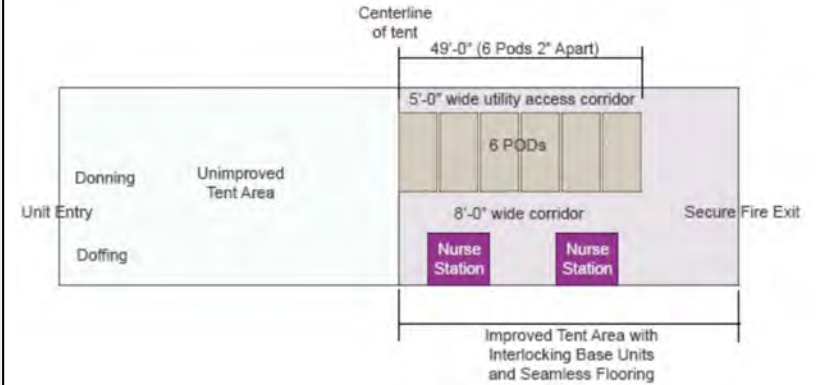
Assessment MA received	N/A
Construction MA received	07 APR 20
Contract Awarded	08 APR 20
Construction Start	09 APR 20
Contractual Completion	22 APR 20
Estimated Completion	22 APR 20
Actual Completion	22 APR 20
Total Construction Duration	14 Days
Notes: 100% Complete; Patient arrival at facility TBD. DC is working on the wrap around services and finishing up the site. Estimated opening of the facility is early to mid May.	

Projected Bed Shortfall 31 May – Jun 07



Plans

- Plans Key:**
- 6 x CMS Set up outside of the UMC in the parking lot.
 - CMS's to be set up inside of a tent
- Notes:**
- NAB secured a price to purchase the containers and FEMA sent a MIPR to NAB on 30 APR 20. Efforts to close out the contract are ongoing.



Submitted Layout for Inside of the Tent – Nurses Stations and Wrap Around Services are being Completed by City of Washington, DC

In Progress Photos





US Army Corps
of Engineers.

NEW BRIDGE-BERGEN MEDICAL CENTER - PARAMUS, NJ

ARENA TO HEALTHCARE (A2HC)



Alternate Care Facility Overview

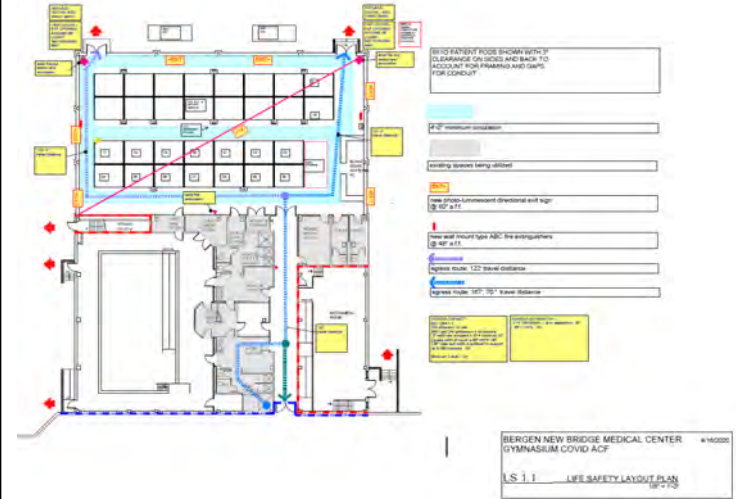
Location: Paramus, NJ
MSC: North Atlantic Division (NAD)
FEMA Region: II
Contractor: CONTI Federal Services, LLC.
Type: Arena (A2HC)
Patient Type: NON-COVID
Facility Size: 6,000 SF
Bed Capacity: 30
Address: 230 E Ridgewood Ave, Paramus, NJ 07652



Plans

Notes

Gym is planned to hold 30 beds.



Timeline

Assessment MA received	23 MAR 20
Construction MA received	29 MAR 20
Contract Awarded	08 APR 20
Construction Start	09 APR 20
Contractual Completion	23 APR 20
Estimated Completion	23 APR 20
Actual Completion	22 APR 20
Total Construction Duration	14 Days
Notes: 100% Complete;	

Projected Bed Shortfall 31 May – Jun 07



In Progress Photos





US Army Corps
of Engineers.

METRO SOUTH MEDICAL CENTER – BLUE ISLAND, IL

HOTEL TO HEALTHCARE (H2HC)



Alternate Care Facility Overview

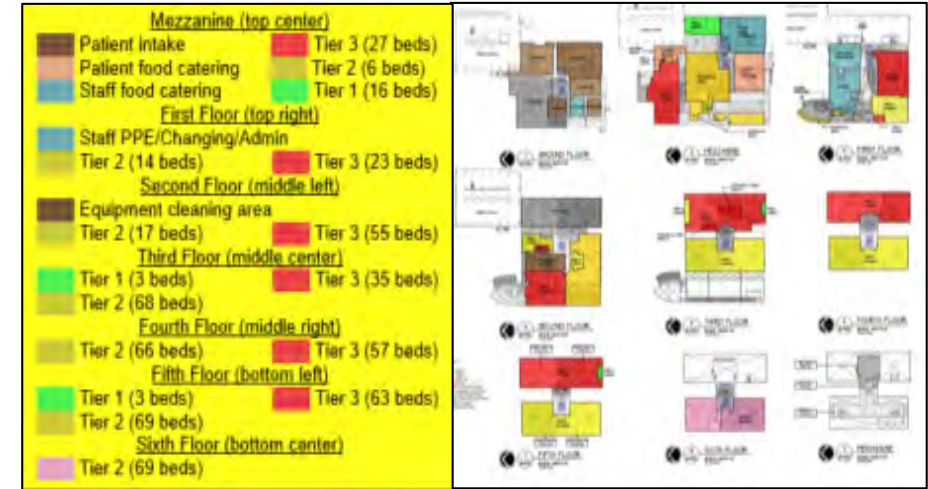
Location: Blue Island, IL
MSC: Great Lakes & Ohio River Div. (LRD)
FEMA Region: V
Contractor: Clark Construction Group, LLC.
Type: Hotel (H2HC)
Patient Type: COVID
Facility Size: 281,256 SF
Bed Capacity: 585
Address: 12935 S Gregory St., Blue Island, IL 60406



Plans

Notes:

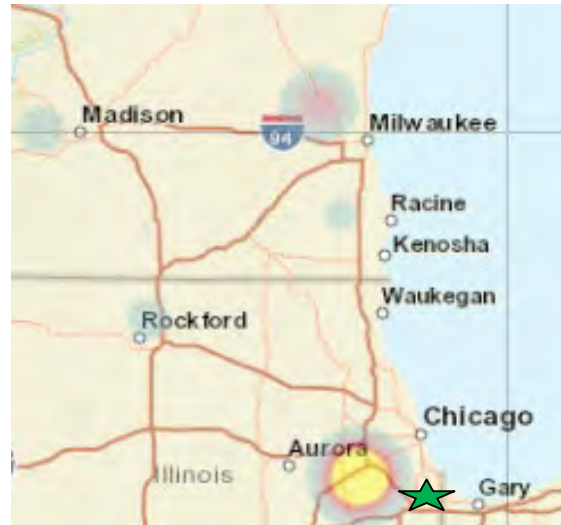
Plans have been adjusted resulting in a slightly lower bed count than what is depicted



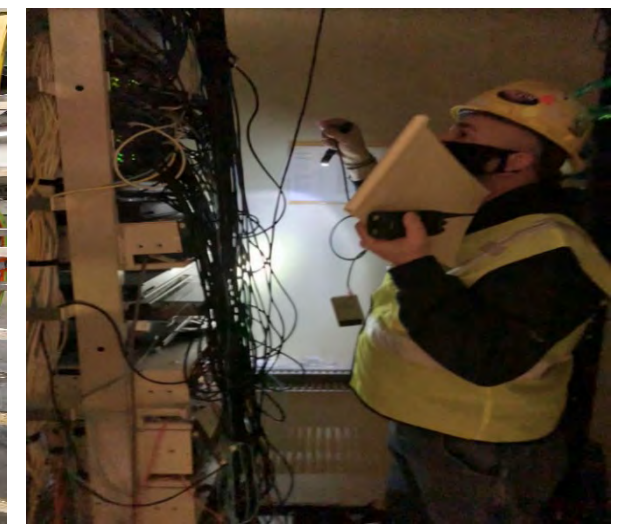
Timeline

Assessment MA received	22 MAR 20
Construction MA received	27 MAR 20
Contract Awarded	29 MAR 20
Construction Start	30 MAR 20
Contractual Completion	24 APR 20
Estimated Completion	23 APR 20
Actual Completion	23 APR 20
Total Construction Duration	25 Days

Projected Bed Shortfall 31 May – Jun 07



In Progress Photos



SHERMAN HOSPITAL – ELGIN, IL

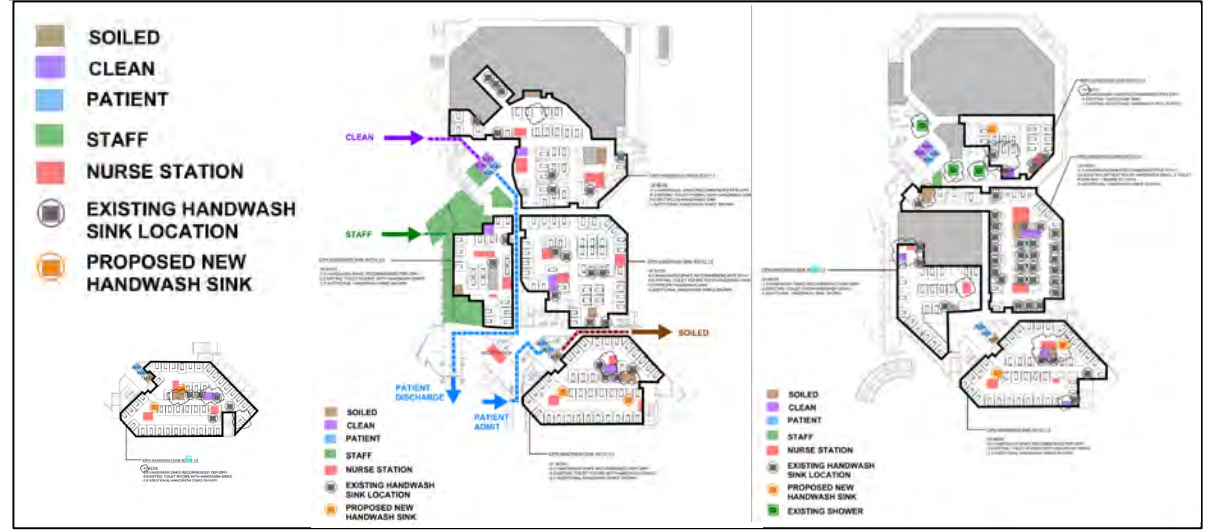
HOTEL TO HEALTHCARE (H2HC)

Alternate Care Facility Overview

Location: Elgin, IL
MSC: Great Lakes & Ohio River Div. (LRD)
FEMA Region: V
Contractor: Turner Construction Company
Type: Hotel (H2HC)
Patient Type: COVID
Facility Size: 371,000 SF
Bed Capacity: 274
Address: 901 Center St., Elgin, IL 60120



Plans



Timeline

Assessment MA received	22 MAR 20
Construction MA received	27 MAR 20
Contract Awarded	29 MAR 20
Construction Start	30 MAR 20
Contractual Completion	24 APR 20
Estimated Completion	23 APR 20
Actual Completion	23 APR 20
Total Construction Duration	25 Days
<u>Notes:</u> 100% Complete	

Projected Bed Shortfall 31 May – Jun 07



In Progress Photos



MCCORMICK PLACE – CHICAGO, IL

ARENA TO HEALTHCARE (A2HC)

Alternate Care Facility Overview

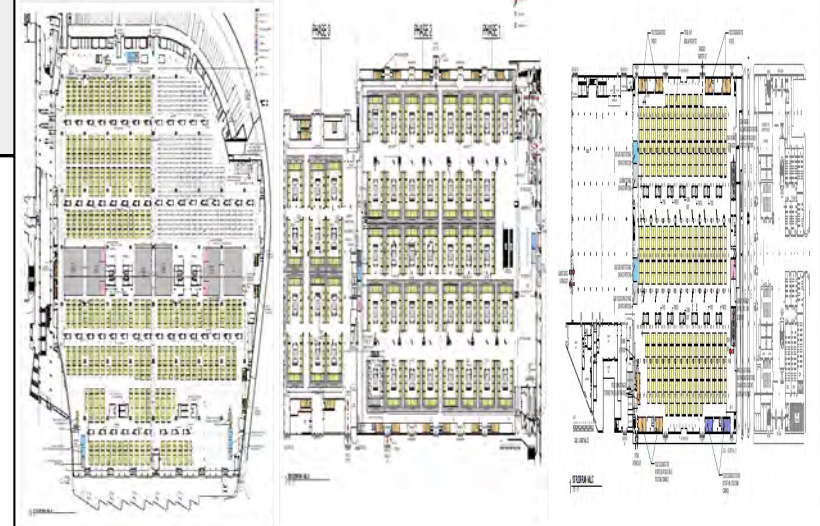
Location: Chicago, IL
MSC: Great Lakes & Ohio River Div. (LRD)
FEMA Region: V
Contractor: Metro. Pier and Expo. Authority
Type: Arena (A2HC)
Patient Type: COVID
Facility Size: 1.5M SF
Bed Capacity: 3,000
Address: 2301 S King Dr., Chicago, IL 60616



Plans

Plans Key:
 Yellow= Patient pods
 Pink = Medical areas
 Orange = Toilets

Notes:
 Hall A has 1750 low acuity beds
 Hall B has 750 medium acuity beds
 Hall C has 500 low acuity beds



Timeline

Assessment MA received	22 MAR 20
Construction MA received	26 MAR 20
Contract Awarded	28 MAR 20
Construction Start	29 MAR 20
Contractual Completion	24 APR 20
Estimated Completion	24 APR 20
Actual Completion	23 APR 20
Total Construction Duration	26 Days
<u>Notes:</u> 100% Complete; First patient admitted 15 APR 20.	

Projected Bed Shortfall 31 May – Jun 07



In Progress Photos





US Army Corps
of Engineers.

HAGERSTOWN CORR. FACILITY – HAGERSTOWN, MD

HOTEL TO HEALTHCARE (H2HC)



Alternate Care Facility Overview

Location: Hagerstown, MD
MSC: North Atlantic Division (NAD)
FEMA Region: III
Contractor: Clark Construction Group, LLC.
Type: Hotel (H2HC)
Patient Type: COVID
Facility Size: 61,000 SF
Bed Capacity: 192
Address: 18601 Roxbury Rd Hagerstown, MD 21746



Timeline

Assessment MA received	17 MAR 20
Construction MA received	03 APR 20
Contract Awarded	10 APR 20
Construction Start	13 APR 20
Contractual Completion	24 APR 20
Estimated Completion	24 APR 20
Actual Completion	24 APR 20
Total Construction Duration	12 Days

Notes: 100% Complete; At 25% Construction Completion, project was handed over to state to complete construction..

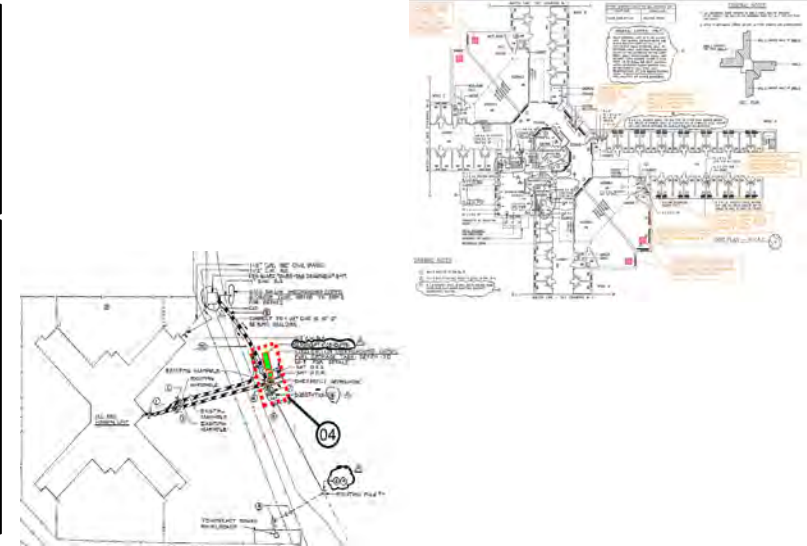
Projected Bed Shortfall 31 May – Jun 07



Plans

Plans Key:
Refurbish closed correctional facility for COVID prisoners.

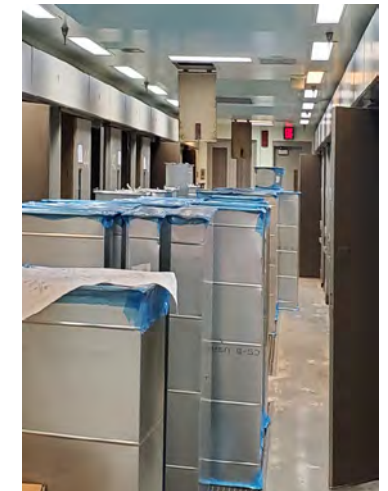
Notes
- Termination letter was issued to the contractor on the night of 23 APR 20.



In Progress Photos

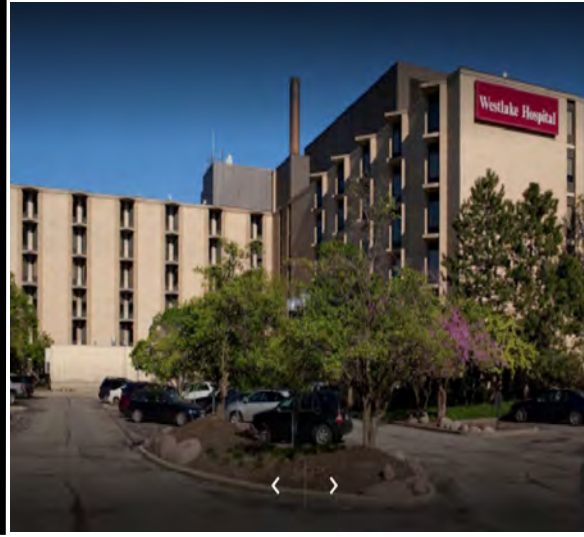
Last 24: 30APR20.
Contractor working on their termination proposal, canceling orders, and returning materials (if possible).

Next 24: 01MAY20.
Awaiting Contractor's termination proposal.



Alternate Care Facility Overview

Location: Melrose Park, IL
MSC: Great Lakes & Ohio River Div. (LRD)
FEMA Region: V
Contractor: Bulley & Andrews
Type: Hotel (H2HC)
Patient Type: COVID
Facility Size: 840,000 SF
Bed Capacity: 430
Address: 12225 W Lake St., Melrose Park, IL 60160



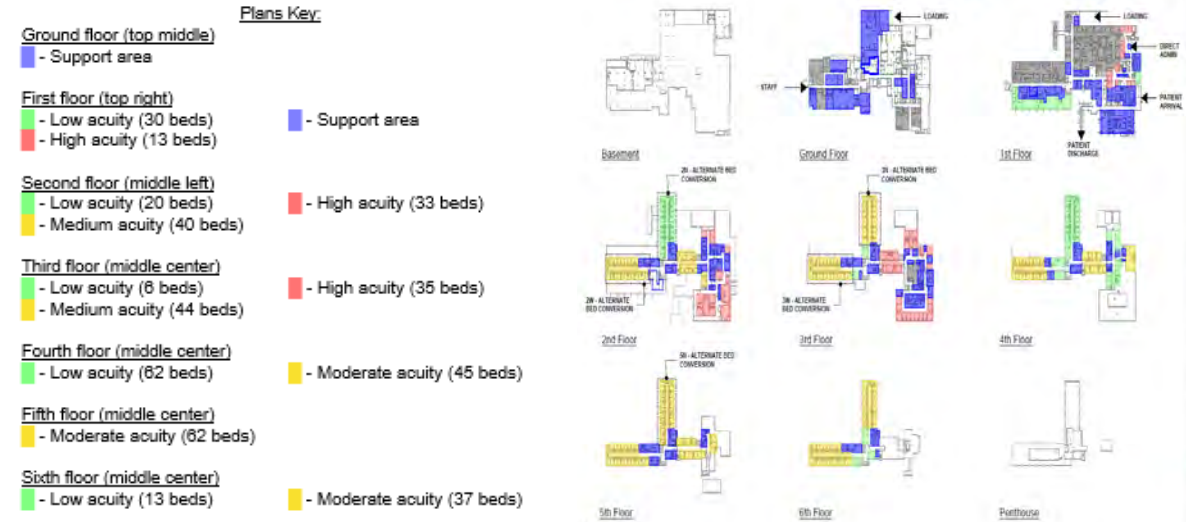
Timeline

Assessment MA received	22 MAR 20
Construction MA received	22 MAR 20
Contract Awarded	05 APR 20
Construction Start	06 APR 20
Contractual Completion	24 APR 20
Estimated Completion	24 APR 20
Actual Completion	24 APR 20
Total Construction Duration	19 Days
Notes: 100% Complete; 90 inline oxygen, med gas, and vacuum 218 inline oxygen and vacuum	

Projected Bed Shortfall 31 May – Jun 07



Plans



In Progress Photos



View of High/Moderate Acuity Patient Space

SUNY STONY BROOK – STONY BROOK, NY

ARENA TO HEALTHCARE (A2HC)

Alternate Care Facility Overview

Location: Stony Brook, NY
MSC: North Atlantic Division (NAD)
FEMA Region: II
Contractor: Turner Construction Company
Type: Arena (A2HC)
Patient Type: COVID & NON-COVID
Facility Size: 255,676 SF
Bed Capacity: 1,028
Address: 100 Nichols Road, Stony Brook, NY 11794



Plans

Notes:

- Bed Breakdown**
- 270 COVID,
 - 758 Non-COVID
 - Final walkthrough with FEMA and NYS occurred on 25 APR.



Timeline

Assessment MA received	18 MAR 20
Construction MA received	23 MAR 20
Contract Awarded/NTP	29 MAR 20
Construction Start	29 MAR 20
Contractual Completion	24 APR 20
Estimated Completion	26 APR 20
Actual Completion	26 APR 20
Total Construction Duration	29 Days

Projected Bed Shortfall 31 May – Jun 07



In Progress Photos



Notes: 100% Complete



COLORADO CONVENTION CENTER – DENVER, COLORADO

ARENA TO HEALTHCARE (A2HC)



US Army Corps
of Engineers.

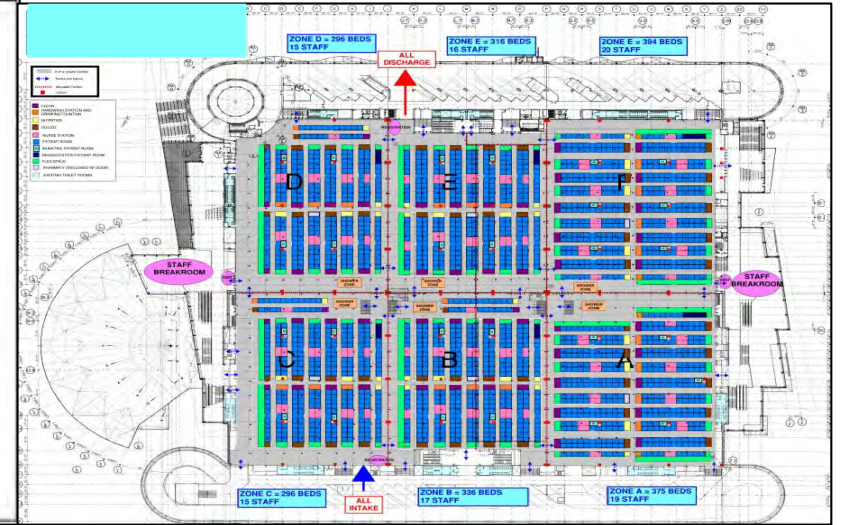
Alternate Care Facility Overview

Location: Denver, CO
MSC: South Pacific Division (SPD)
FEMA Region: VIII
Contractor: ECC Environmental LLC.
Type: Arena (A2HC)
Patient Type: COVID
Facility Size: 584,000 SF
Bed Capacity: 1,243
Address: 700 14 th St., Denver, CO 80202



Plans

- CLEAN
- HANDWASH STATION AND DRINKING FOUNTAIN
- NUTRITION
- SOILED
- NURSE STATION
- PATIENT ROOM
- BARIATRIC PATIENT ROOM
- RESUSCITATION PATIENT ROOM
- FLEX SPACE
- PHARMACY (ENCLOSED W/ DOOR)
- EXISTING TOILET ROOMS



Timeline

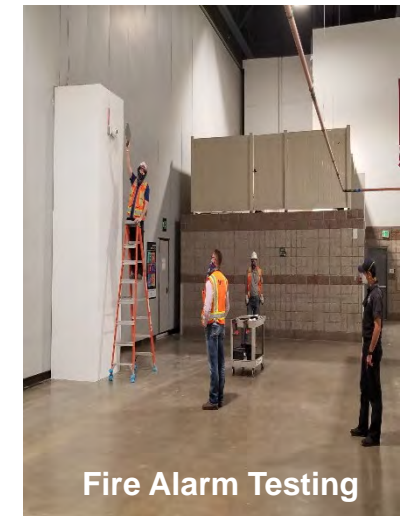
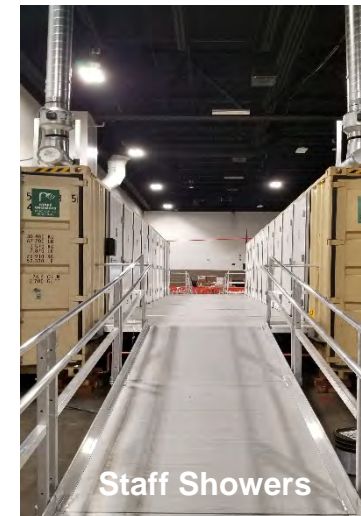
Assessment MA received	19 MAR 20
Construction MA received	01 APR 20
Contract Awarded	05 APR 20
Construction Start	09 APR 20
Contractual Completion	27 APR 20
Estimated Completion	27 APR 20
Actual Completion	24 APR 20
Total Construction Duration	16 Days

Notes: 100% Complete;
Final walkthrough 24APR20
Date Patients Arrive: TBD

Projected Bed Shortfall 31 May – Jun 07



In Progress Photos



JAVITS CENTER – NEW YORK, NY

ARENA TO HEALTHCARE (A2HC)

Alternate Care Facility Overview

Location: New York, NY
MSC: North Atlantic Division (NAD)
FEMA Region: II
Contractor: NYCC Op. Corp.
Type: Arena (A2HC)
Patient Type: COVID
Facility Size: 470,000 SF
Bed Capacity: 2,106
Address: 655 West 34 th St., New York, NY 10014.



Plans

Plans Key:
Blue: Patient rooms / beds
Pink/Purple: Nurse stations

Notes
1st floor: 652 beds with 1,304 bed surge capacity
3rd Floor: 946 bed with 1,892 bed surge capacity

Also includes 508 beds with 1,016 bed surge capacity (FMS area)



Timeline

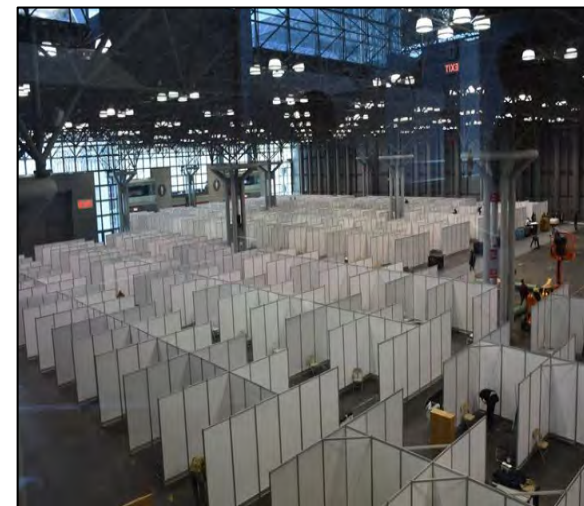
Assessment MA received	22 MAR 20
Construction MA received	23 MAR 20
Contract Awarded	25 MAR 20
Construction Start	30 MAR 20
Contractual Completion	30 APR 20
Estimated Completion	30 APR 20
Actual Completion	24 APR 20
Total Construction Duration	26 Days

Projected Bed Shortfall 31 May – Jun 07



Notes: 100% Complete; First patient arrived 11 APR 20. HEPA filters and punch list completion expected by 30 APR 20. **Total of 1,085 patients treated since 30 MAR 20.**

In Progress Photos



Alternate Care Facility Overview

Location: Old Westbury, NY
MSC: North Atlantic Division (NAD)
FEMA Region: II
Contractor: AECOM Technical Services, Inc.
Type: Arena (A2HC)
Patient Type: COVID & NON-COVID
Facility Size: 207,000 SF
Bed Capacity: 1,024
Address: 223 Store Hill Road, Old Westbury, NY 11568



Plans

Plans Key:
 Blue = COVID ventilator-capable layout; 699 total beds
 Blue w/ red stripes: COVID non-ventilator capable layout; 221 total beds
 Orange: Non-COVID; 104 total beds

920 COVID
 104 NON-COVID



Timeline

Assessment MA received	18 MAR 20
Construction MA received	23 MAR 20
Contract Awarded	29 MAR 20
Construction Start	31 MAR 20
Contractual Completion	27 APR 20
Estimated Completion	27 APR 20
Actual Completion	27 APR 20
Total Construction Duration	28 Days
Notes: 100% Complete; Punch list to finish 01 MAY 20.	

Projected Bed Shortfall 31 May – Jun 07



In Progress Photos



ST. FRANCIS HOSPITAL – TRENTON, NJ

HOTEL TO HEALTHCARE (H2HC)

Alternate Care Facility Overview

Location: Trenton, NJ
MSC: North Atlantic Division (NAD)
FEMA Region: II
Contractor: TDX Sand Point Services
Type: Hotel (H2HC)
Patient Type: COVID
Facility Size: 6,000 SF
Bed Capacity: 37
Address: 601 Hamilton Ave, Trenton, NJ 08629



Plans

Notes

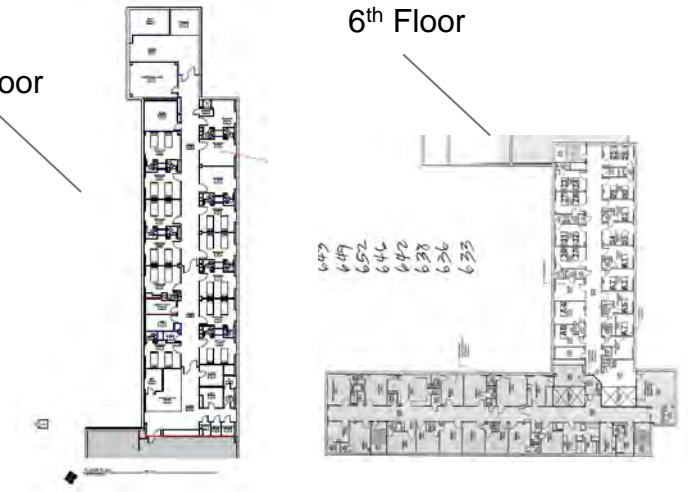
4th floor: 11 Rooms, 22 Beds

6th floor: 8 Rooms, 15 Beds

Total 37 Beds

4th Floor

6th Floor



Timeline

Assessment MA received	23 MAR 20
Construction MA received	29 MAR 20
Contract Awarded	13 APR 20
Construction Start	14 APR 20
Contractual Completion	27 APR 20
Estimated Completion	28 APR 20
Actual Completion	28 APR 20
Total Construction Duration	14 Days
Notes: 100% Complete Definitized on 25 APR 20.	

Projected Bed Shortfall 31 May – Jun 07



Site Visit Photos





ATSA BIYAAZH SCHOOL (NAVAJO NATION) – SHIPROCK, NM

ARENA TO HEALTHCARE (A2HC)



US Army Corps
of Engineers.

Alternate Care Facility Overview

Location: Shiprock, NM
MSC: South Pacific Division (SPD)
FEMA Region: IX
Contractor: Four Winds Mechanical HTC/AC, Inc.
Type: Arena (A2HC)
Patient Type: NON-COVID
Facility Size: 7,400 SF
Bed Capacity: 40
Address: 1416 Pinon Drive, Shiprock, NM 87402



Plans

Notes:

- Facility contains
- 40 patient cubes
- Plumbed oxygen to each cube
- Four nurses' stations
- No negative pressure



Timeline

Assessment MA received	04 APR 20
Construction MA received	15 APR 20
Contract Awarded	17 APR 20
Construction Start	18 APR 20
Contractual Completion	01 MAY 20
Estimated Completion	29 APR 20
Actual Completion	29 APR 20
Total Construction Duration	14 Days
Notes: 100% Complete; Definitized on 25 APR 20.	

Projected Bed Shortfall 31 May – Jun 07



In Progress Photos





NEW BRIDGE-BERGEN MED CTR PARKING LOT - PARAMUS, NJ

ARENA TO HEALTHCARE (A2HC)



US Army Corps of Engineers.

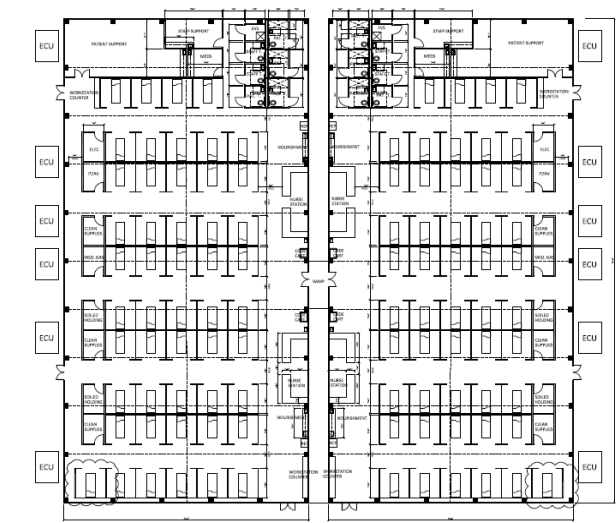
Alternate Care Facility Overview

Location: Paramus, NJ
MSC: North Atlantic Division (NAD)
FEMA Region: II
Contractor: DynCorp International
Type: Arena (A2HC)
Patient Type: COVID
Facility Size: 27,000 SF
Bed Capacity: 100
Address: 230 E Ridgewood Ave, Paramus, NJ 07652



Plans

Notes
Tent will be erected in parking lot to fit 100 beds.



Timeline

Assessment MA received	23 MAR 20
Construction MA received	29 MAR 20
Contract Awarded	14 APR 20
Construction Start	15 APR 20
Contractual Completion	29 APR 20
Estimated Completion	29 APR 20
Actual Completion	29 APR 20
Total Construction Duration	15 Days
Notes: 100% Complete;	

Projected Bed Shortfall 31 May – Jun 07



In Progress Photos





CHINLE COMMUNITY CENTER (NAVAJO NATION) – CHINLE, AZ

ARENA TO HEALTHCARE (A2HC)



US Army Corps
of Engineers.

Alternate Care Facility Overview

Location: Chinle, AZ
MSC: South Pacific Division (SPD)
FEMA Region: IX
Contractor: Weil Construction, Inc.
Type: Arena (A2HC)
Patient Type: NON-COVID
Facility Size: 15,000 SF
Bed Capacity: 50
Address: US 191, Mile 448, Chinle, AZ, 86503



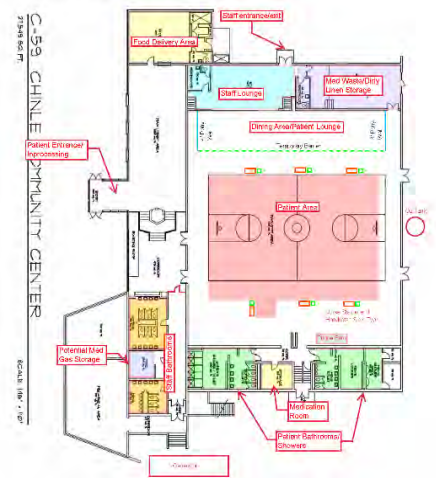
Plans

Notes:

- Facility will contain
- 50 patient cubes
 - Plumbed oxygen to each cube
 - Six nurses' stations
 - No negative pressure



*Staff showers to be located at Wildcat Den



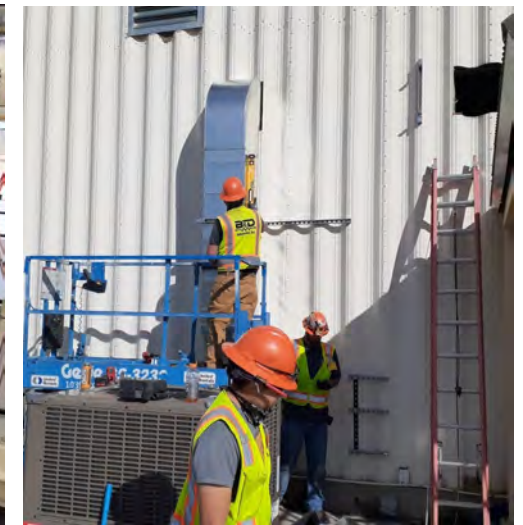
Timeline

Assessment MA received	04 APR 20
Construction MA received	15 APR 20
Contract Awarded	17 APR 20
Construction Start	18 APR 20
Contractual Completion	01 MAY 20
Estimated Completion	01 MAY 20
Actual Completion	
Total Construction Duration	14 Days
Notes: 90% Complete; Definitized on 25 APR 20.	

Projected Bed Shortfall 31 May – Jun 07



In Progress Photos



THE RANCH EVENTS COMPLEX – LOVELAND, CO

ARENA TO HEALTHCARE (A2HC)

Alternate Care Facility Overview

Location: Loveland, CO
MSC: South Pacific Division (SPD)
FEMA Region: VIII
Contractor: AECOM Tech. Services LLC
Type: Arena (A2HC)
Patient Type: COVID
Facility Size: 374,000 SF
Bed Capacity: 192
Address: 5280 Arena Cir, Loveland, CO 80538



Timeline

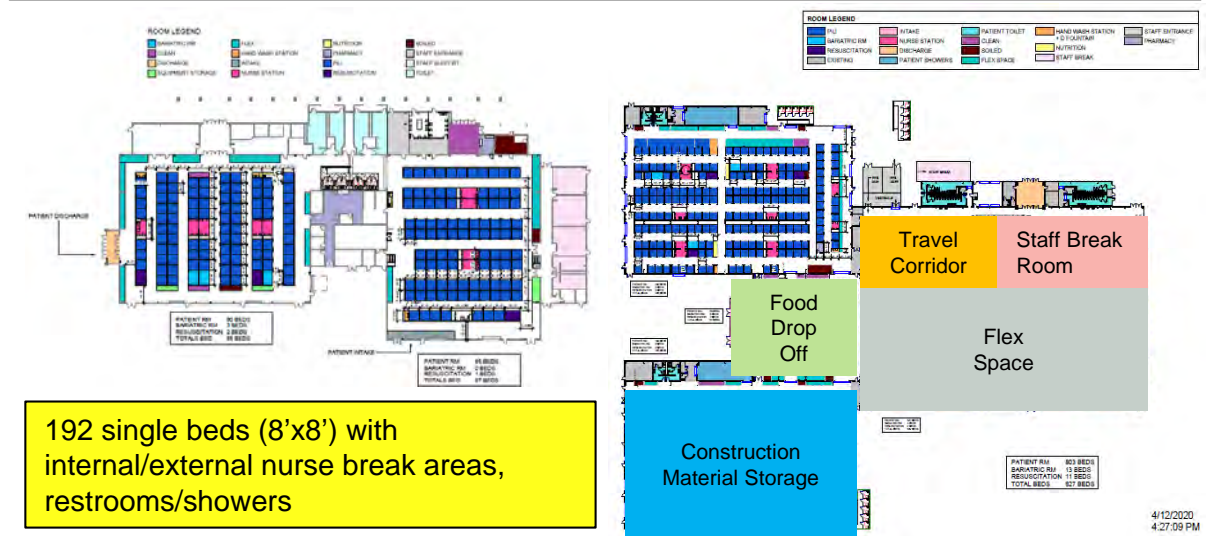
Assessment MA received	03 APR 20
Construction MA received	10 APR 20
Contract Awarded	08 APR 20
Construction Start	11 APR 20
Contractual Completion	10 MAY 20
Estimated Completion	01 MAY 20
Actual Completion	
Total Construction Duration	21 Days

Notes: 97% Complete

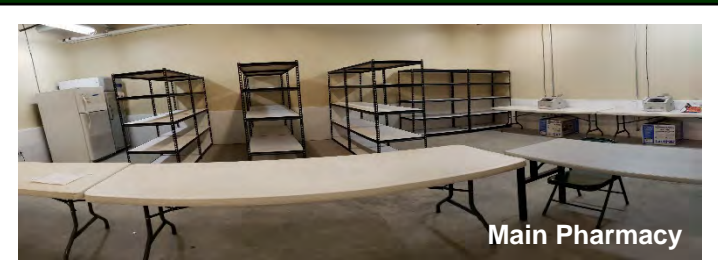
Projected Bed Shortfall 31 May – Jun 07



Plans



In Progress Photos



Alternate Care Facility Overview

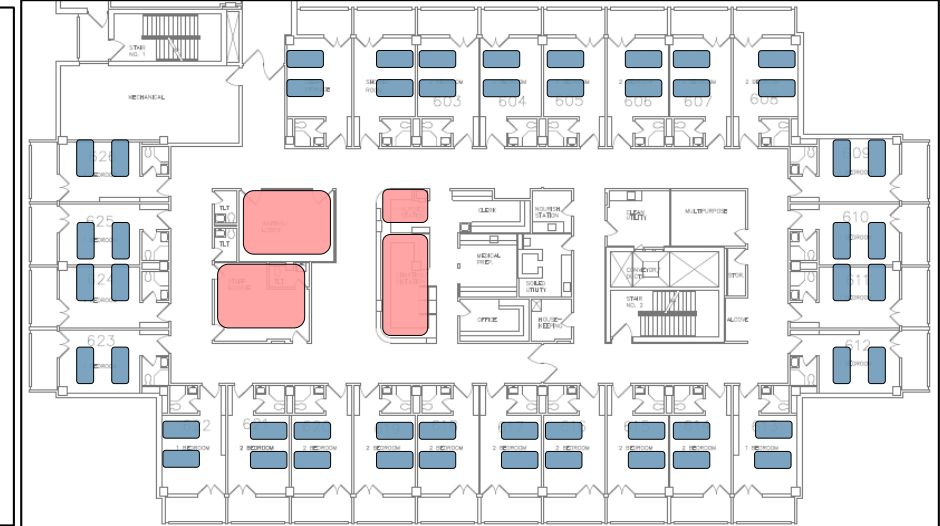
Location: Phoenix, AZ
MSC: South Pacific Division (SPD)
FEMA Region: IX
Contractor: Aptim Fed. Serv., LLC
Type: Hotel (H2HC)
Patient Type: COVID
Facility Size: 219,000 SF
Bed Capacity: 254
Address: 1800 E Van Buren St., Phoenix, AZ 85006



Plans

Notes:
1 building with 7 patient floors, not all floors have the same layout. This is an example of the 7th Floor, that shows 2 beds per room, and 52 bed spaces. State ask is 254 beds

■ = bed space
■ = staff/admin



Timeline

Assessment MA received	24 MAR 20
Construction MA received	31 MAR 20
Contract Awarded	11 APR 20
Construction Start	12 APR 20
Contractual Completion	03 MAY 20
Estimated Completion	02 MAY 20
Actual Completion	
Total Construction Duration	21 Days
Notes: 89% Complete	

Projected Bed Shortfall 31 May – Jun 07



In Progress Photos





US Army Corps
of Engineers.

EAST ORANGE GENERAL HOSPITAL – EAST ORANGE, NJ

HOTEL TO HEALTHCARE (H2HC)



Alternate Care Facility Overview

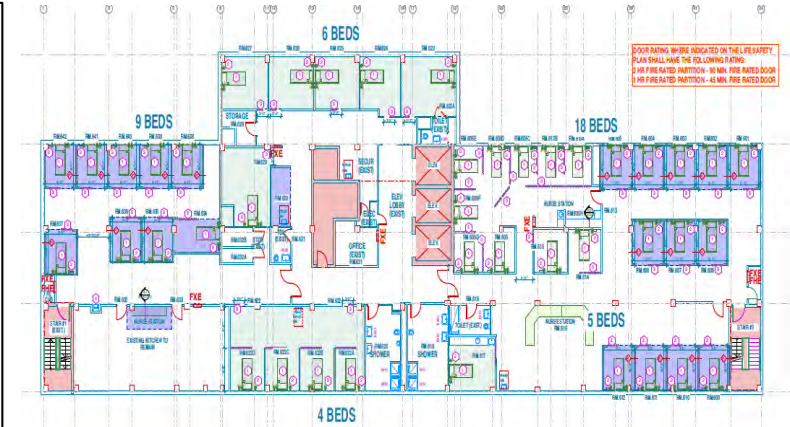
Location: East Orange, NJ
MSC: North Atlantic Division (NAD)
FEMA Region: II
Contractor: Cutting Edge LLC
Type: Hotel (H2HC)
Patient Type: COVID
Facility Size: 40,000 SF
Bed Capacity: 250
Address: 240 Central Ave, East Orange, NJ 07018



Plans

Notes

6 floors planned for use for capacity totaling 250 beds



Timeline

Assessment MA received	23 MAR 20
Construction MA received	29 MAR 20
Contract Awarded	07 APR 20
Construction Start	09 APR 20
Contractual Completion	05 MAY 20
Estimated Completion	05 MAY 20
Actual Completion	
Total Construction Duration	27 Days

Projected Bed Shortfall 31 May – Jun 07



In Progress Photos





210 ARNG REGIONAL TRAINING INSTITUTE – ST. CROIX, USVI

HOTEL TO HEALTHCARE (H2HC)



US Army Corps
of Engineers.

Alternate Care Facility Overview

Location: St. Croix, USVI
MSC: South Atlantic Division (SAD)
FEMA Region: II
Contractor: CONTI Federal Services, LLC.
Type: Hotel (H2HC)
Patient Type: COVID
Facility Size: 44,788 SF
Bed Capacity: 24
Address: Rural Route #1 Box 9200 Kingshill, St Croix 00850 USVI






Timeline

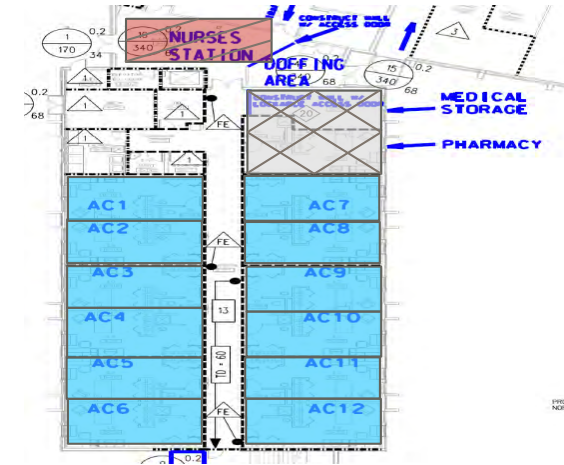
Assessment MA received	12 APR 20
Construction MA received	13 APR 20
Contract Awarded	17 APR 20
Construction Start	24 APR 20
Contractual Completion	26 MAY 20
Estimated Completion	08 MAY 20
Actual Completion	
Total Construction Duration	15 Days
<u>Notes:</u> 25% Complete;	

Projected Bed Shortfall 31 May – Jun 07



Plans

-  Nurse Station
-  Double Occupancy
Acute Care Rooms
-  Admin / Storage Area



First Floor

In Progress Photos



Supply Duct Cutoffs for DOAS HVAC System.



Nurses' Station Installation in Progress.



WALTER E. WASHINGTON CONV. CNTR – WASHINGTON, D.C.

ARENA TO HEALTHCARE (A2HC)



US Army Corps
of Engineers.

Alternate Care Facility Overview

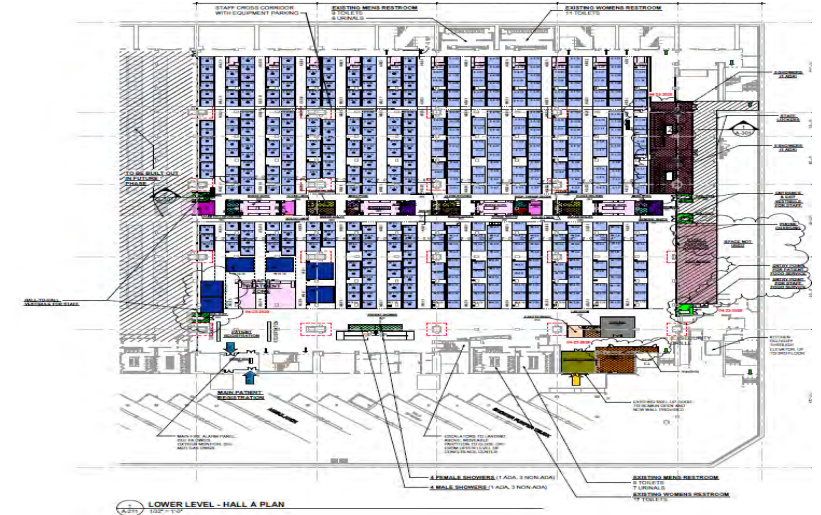
Location: Walt. Wash. Conv. Center
MSC: North Atlantic Division (NAD)
FEMA Region: III
Contractor: Hensel Helps Construction Co.
Type: Arena (A2HC)
Patient Type: COVID & NON-COVID
Facility Size: 2,300,000 SF
Beds Capacity: 443
Address: 801 Mt Vernon PL. NW, Washington, D.C. 20001



Plans

Plans Key:
Plan is to set up beds on the Lower level (Hall A)

Notes: Reduced PWS to only include Hall A with a modification to the bed count to include 6 x rapid treatment beds



Timeline

Assessment MA received	17 MAR 20
Construction MA received	07 APR 20
Contract Awarded	16 APR 20
Construction Start	22 APR 20
Contractual Completion	08 MAY 20
Estimated Completion	08 MAY 20
Actual Completion	
Total Construction Duration	17 Days

Notes: 53% Complete; Contract definitized on 29 APR 20. Hall A delivery date – 08 MAY 20.

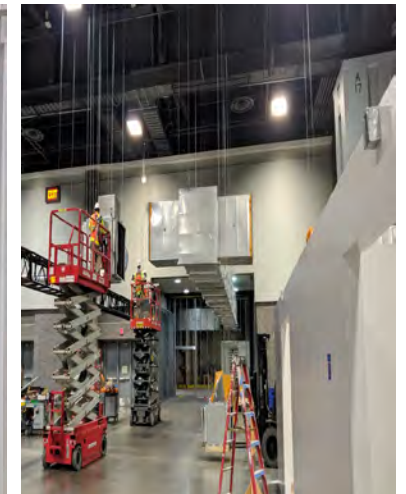
Projected Bed Shortfall 31 May – Jun 07



In Progress Photos

Last 24. 30MAY20;
Czarnowski panel QA/QC,
Prep for O2 tank placement,
Med-gas piping, sinks,
Deliveries of materials
continue, Emergency Power
feeder lines, headboards,
plumbing, HVAC, drywall,
painting, vacuum pump,
partition divider,
Duct/hanger/wire inspections

Next 24. 01JUN20; continue
previous day's work





US Army Corps
of Engineers.

INTEGRIS BAPTIST PORT. CAMPUS – OKLAHOMA CITY, OK

HOTEL TO HEALTHCARE (H2HC)



Alternate Care Facility Overview

Location: Oklahoma City, OK
MSC: Southwestern Division (SWD)
FEMA Region: VI
Contractor: Manhattan Construction Company
Type: Hotel (H2HC)
Patient Type: COVID
Facility Size: 400,000 SF
Bed Capacity: 110
Address: 5501 North Portland Ave, Oklahoma City, OK 73112



Plans

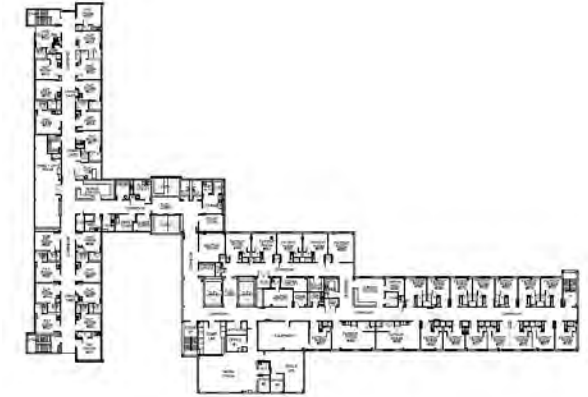
Notes:

110 acute COVID beds in designated areas on 4 floors.

Electrical requirements per room validated. Fire alarms tested on floors 2, 3 & 5.

Negative pressure HVAC units have been ordered with quick ship availability.

Mold & possible ACM found, ACM encapsulation likely best mitigation strategy.

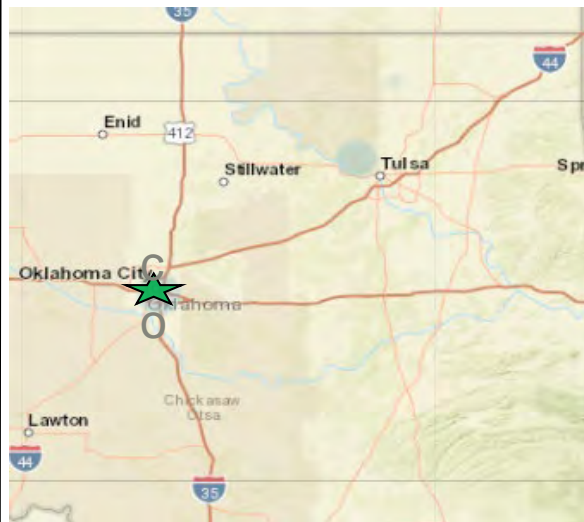


Typical Upper Floor Plan

Timeline

Assessment MA received	10 APR 20
Construction MA received	23 APR 20
Contract Awarded	26 APR 20
Construction Start	27 APR 20
Contractual Completion	TBD
Estimated Completion	09 MAY 20
Actual Completion	
Total Construction Duration	

Projected Bed Shortfall 31 May – Jun 07



In Progress Photos



Notes: 15% Complete;
Design proceeding, potential mold & possible ACM mitigation being investigated.

OSU MEDICAL CENTER – TULSA, OK

HOTEL TO HEALTHCARE (H2HC)

Alternate Care Facility Overview

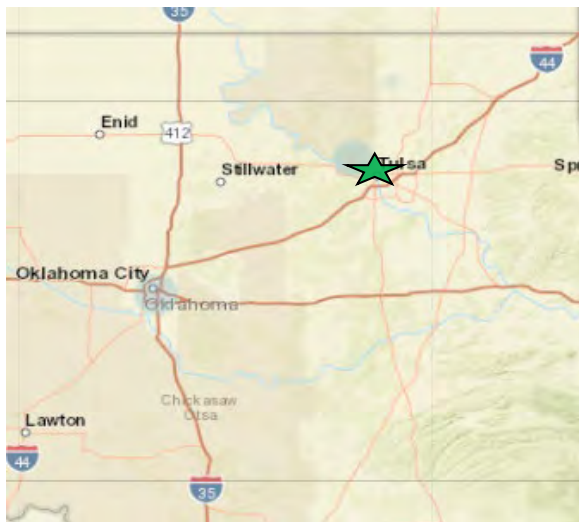
Location: Tulsa, OK
MSC: Southwestern Division (SWD)
FEMA Region: VI
Contractor: Manhattan Construction Company
Type: Hotel (H2HC)
Patient Type: COVID
Facility Size: 86,570 SF
Bed Capacity: 125
Address: 744 W. 9th Street, Tulsa, OK, 74127



Timeline

Assessment MA received	10 APR 20
Construction MA received	23 APR 20
Contract Awarded	26 APR 20
Construction Start	27 APR 20
Contractual Completion	TBD
Estimated Completion	11 MAY 20
Actual Completion	
Total Construction Duration	
Notes: 15% Complete; Contractor mobilized and operating. Definitization meeting on 04 MAY 20.	

Projected Bed Shortfall 31 May – Jun 07



Plans

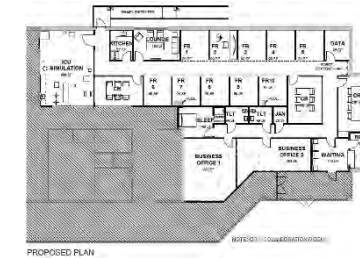
Notes:

125 COVID rooms on 4 floors (5-7 on West Wing + 8th floor).

City of Tulsa requiring permitting.

Tele-health demo and framing underway.

Negative pressure being proposed by floor instead of by room. Floor 8 may require additional equipment.

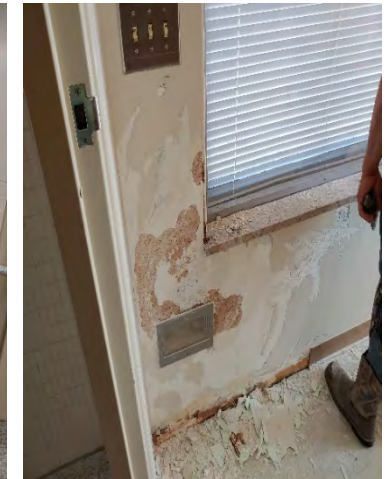
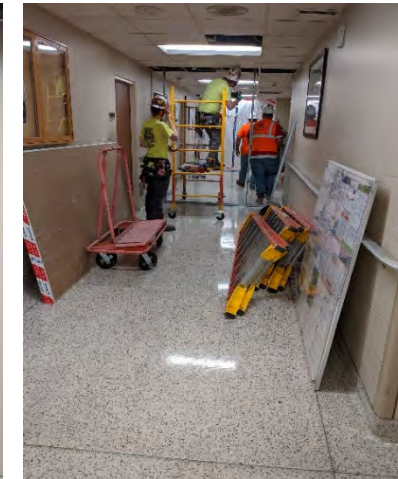


Tele-health Floor Plan



Typical Floor Plan

In Progress Photos



EUGENE RIVER AVENUE FACILITY – EUGENE, OR

HOTEL TO HEALTHCARE (H2HC)

Alternate Care Facility Overview

Location: Eugene, OR
MSC: Northwest Division (NWD)
FEMA Region: X
Contractor: Turner Construction Company
Type: Hotel (H2HC)
Patient Type: COVID Non-Acute
Facility Size: 18,550 SF
Bed Capacity: 42
Address: 100 River Ave, Eugene, OR 97404



Timeline

Assessment MA received	03 APR 20
Construction MA received	16 APR 20
Contract Awarded	17 APR 20
Construction Start	18 APR 20
Contractual Completion	15 MAY 20
Estimated Completion	13 MAY 20
Actual Completion	
Total Construction Duration	26 Days

Notes: 45% Complete; Construction – HVAC, wall partitions, bathrooms/showers.
Definitization award – NLT 01 MAY 20.

Projected Bed Shortfall 31 May – Jun 07



Plans

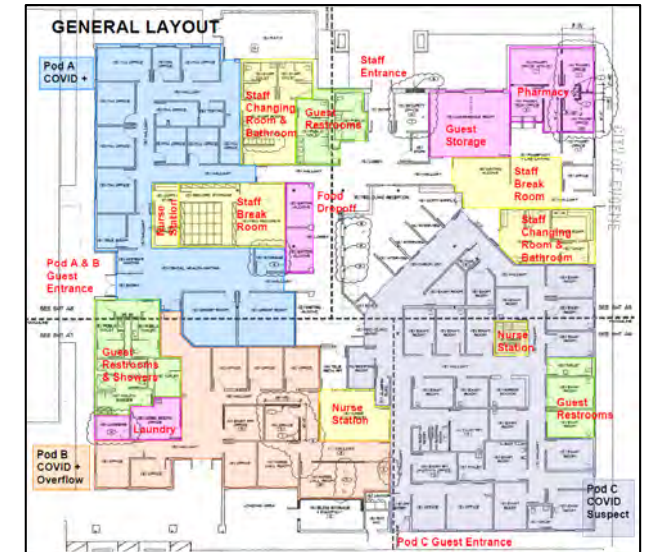
Notes:

GENERAL LAYOUT (right)

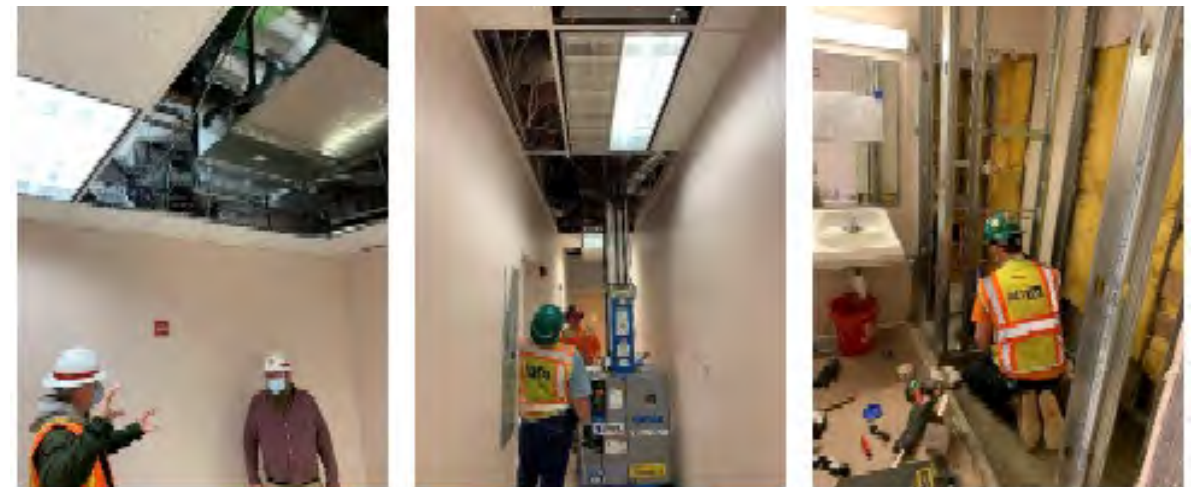
Scope Items:

- Utility upgrade/repair of HVAC/elec./plumbing systems
- Interior renovation of patient/staff/bath rooms
- Upgrade of nurse call system and IT infrastructure
- Upgrade of interior/exterior security features
- Repair existing ext. fencing
- Partitions (COVID/presumed COVID)

Note: COVID/presumed COVID separated by walls/secured doors and constructed partitions



In Progress Photos



COMMERCIAL APPEAL BUILDING – MEMPHIS, TN

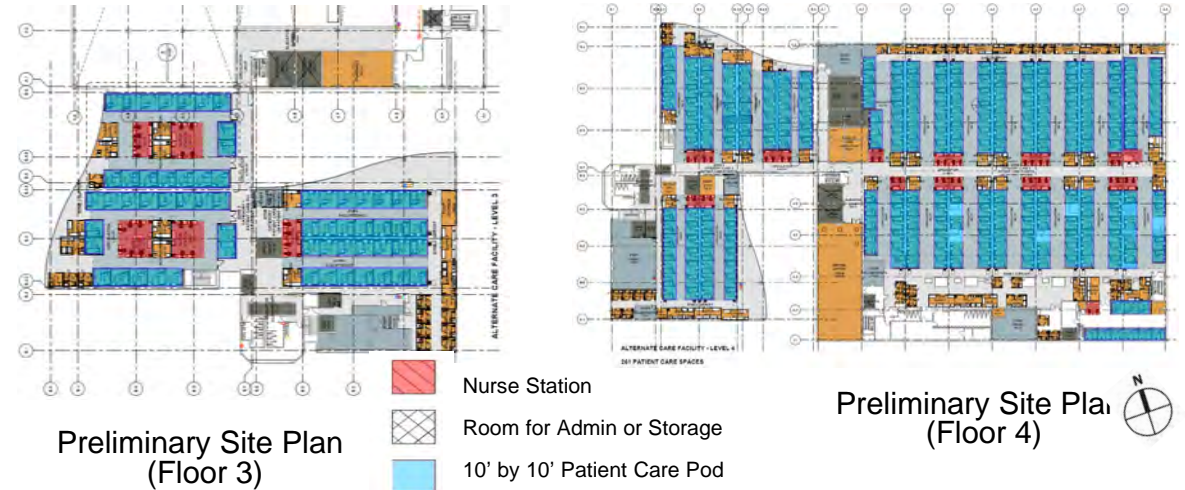
ARENA TO HEALTHCARE (A2HC)

Alternate Care Facility Overview

Location: Memphis, TN
MSC: Great Lakes and River Div (LRD) Executing: Mississippi Valley Div (MVD)
FEMA Region: IV
Contractor: AECOM Tech. Serv.
Type: Arena (A2HC)
Patient Type: COVID
Facility Size: 140,000 SF
Bed Capacity: 401
Address: 495 Union Ave., Memphis, TN 38103



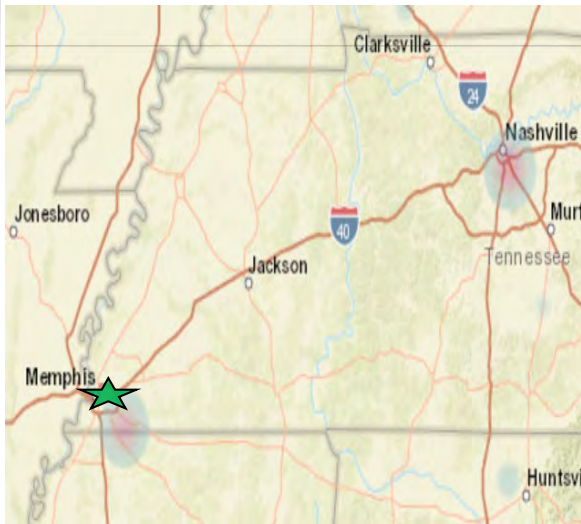
Plans



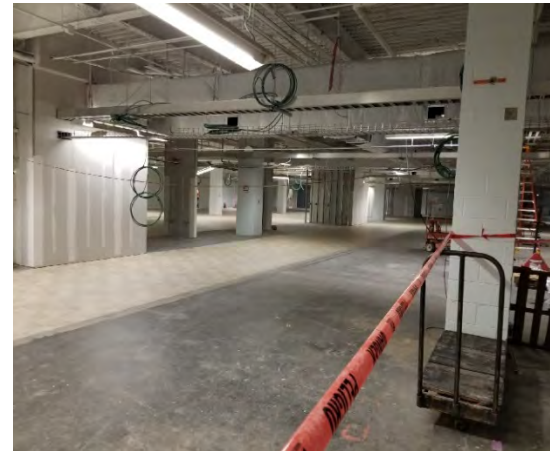
Timeline

Assessment MA received	03 APR 20
Construction MA received	10 APR 20
Contract Awarded	16 APR 20
Construction Start	16 APR 20
Contractual Completion	14 MAY 20
Estimated Completion	14 MAY 20
Actual Completion	
Total Construction Duration	29 Days
Notes: 50% Complete;	

Projected Bed Shortfall 31 May – Jun 07



In Progress Photos



29APR20: Flooring Installation
on 4th Floor Warehouse



29APR20: 1st Floor Bed Lighting
Assembly and Storage